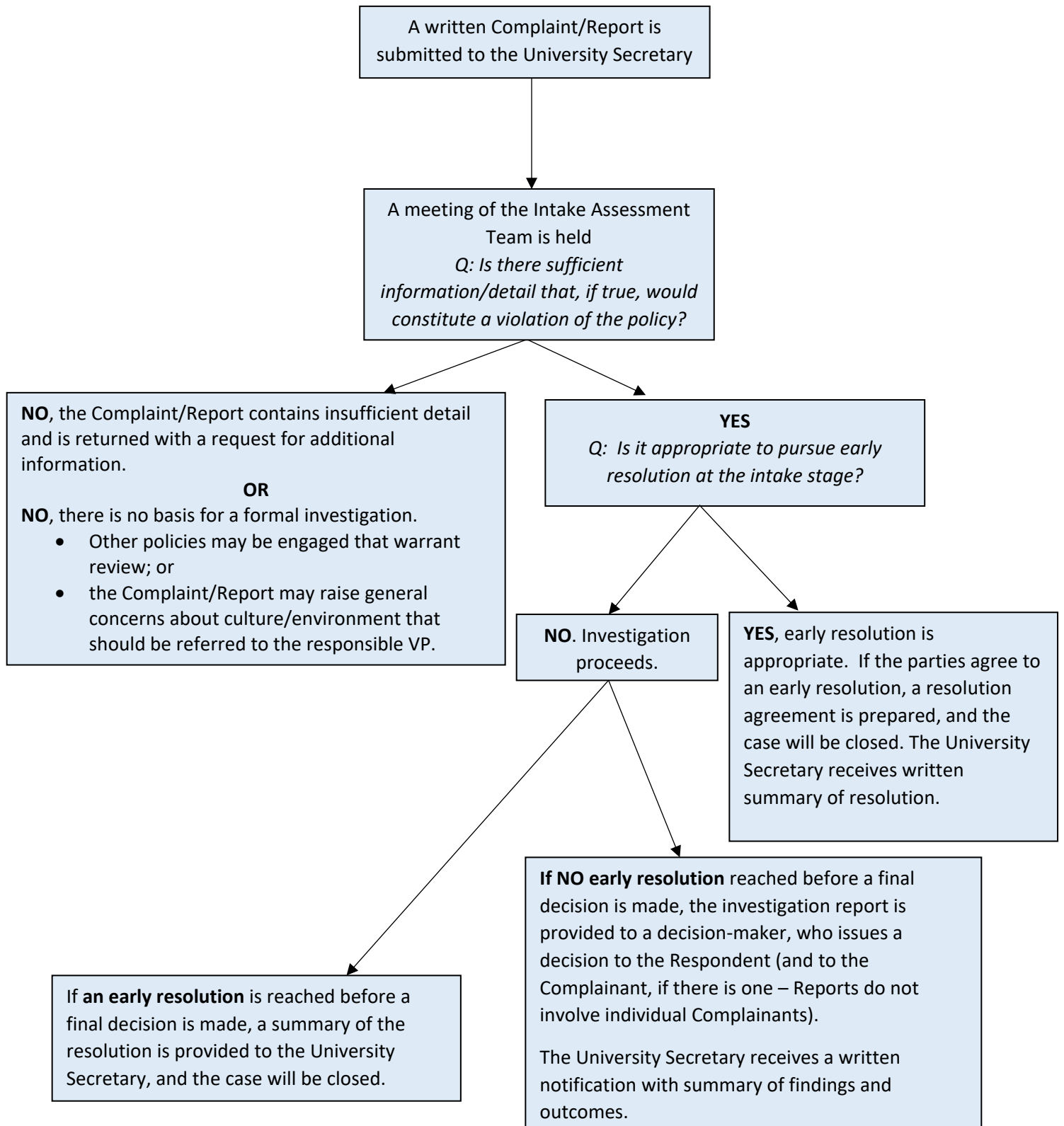


## HARASSMENT & DISCRIMINATION PREVENTION AND RESPONSE POLICY

University Community members may choose to seek advice and information from a variety of university offices about what is believed to be incidents of Harassment, Discrimination or Reprisal. If the issues raised cannot be resolved without a formal Complaint or Report, the process outlined below is followed.



The Assessment Team will complete a reporting process on an annual basis.