

Referred to SONAD

Appendix A

QUEEN'S UNIVERSITY RESIDENCES

Appendix A of the Report to Senate by the Senate Residence Committee for the period September 2009 to April 2010. (See Senate Agenda Appendix F, page 32 for Senate Residence Committee Annual Report)

Summary of Actions Judicial Report & Statistics 2009-2010

Introduction

In accordance with the *Guidelines for Handling Non-Academic Discipline at Queen's* (2003), a summary of actions from the Discipline Working Group (DWG) of the Senate Residence Committee (SRC) is submitted annually to the Senate. This report adheres to this requirement.

Queen's University Residences recognizes the importance of promoting and supporting students in making positive choices that do not conflict with other residents' pursuits of academic endeavours. It is for this reason that the Residence Discipline Process has implemented 'Community Standards' which are guidelines and behavioural expectations that residence students live by to ensure the safety and security of the residence community. Breaches of community standards are classified into three different levels, Level One, Level Two, and Level Three.

Level One incidents are actions by an individual or individuals that interfere with another resident's peaceful use and enjoyment of his or her space in residence. Level Two incidents are actions by an individual or individuals that have a significant negative impact on another resident; actions that endanger the safety and security of the perpetrator or others in residence; actions that undermine the dignity of another individual; or actions which result in damage to University property. Level Three incidents include offences of a serious nature that are not expressly Level One or Level Two offences, or complex behaviour.

Level One incidents are handled by Discipline Facilitators in conjunction with Residence Life Coordinators; Level Two incidents are dealt with by the Peer Judicial Board, while Level Three incidents are resolved by the Director of Residence Life, with other campus departments or organizations as necessary.

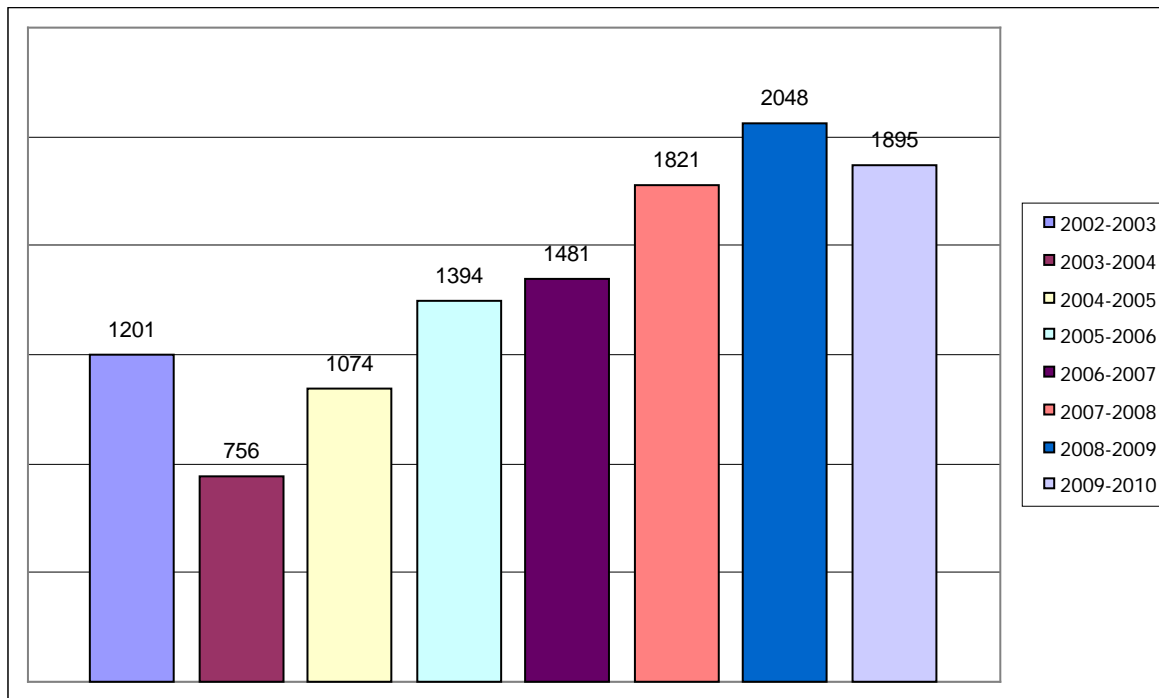
Statistics in the Residence Judicial System

It is important to note that for the 2009-2010 academic year, although there was a significant decrease in the number of cases in the first semester, the overall number of respondents involved in cases over the course of the entire academic year has been relatively consistent with previous year.

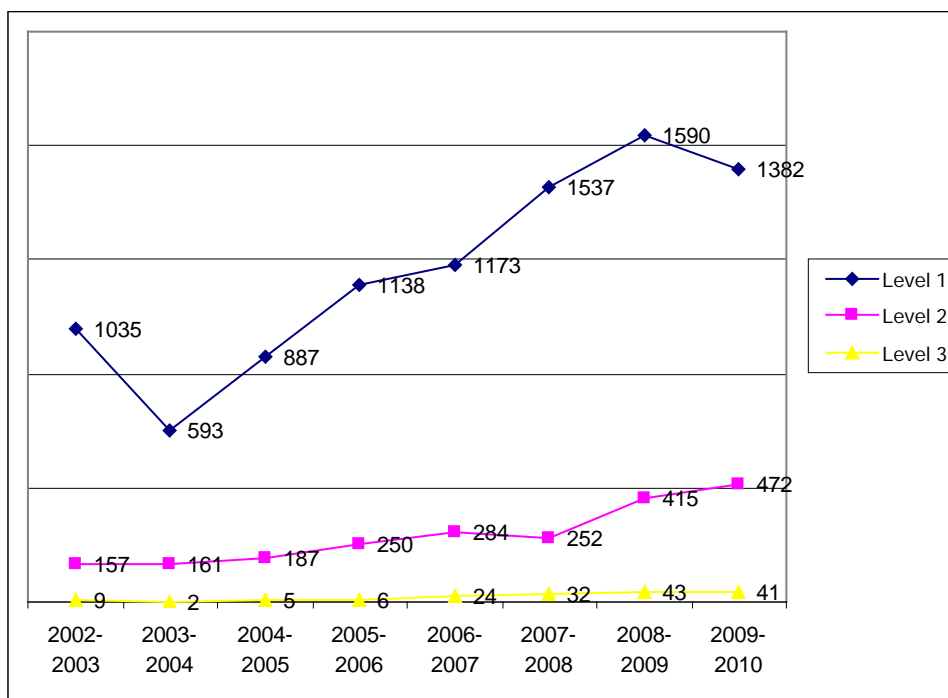
Breakdown per Level of the Total Number of Respondents Found Responsible

	2002- 2003	2003- 2004	2004- 2005	2005- 2006	2006- 2007	2007- 2008	2008- 2009	2009- 2010
Level 1	1035	593	887	1138	1173	1537	1590	1382
Level 2	157	161	187	250	284	252	415	472
Level 3	9	2	5	6	24	32	43	41
Total	1201	756	1074	1394	1481	1821	2048	1895

Total Number of Respondents Found Responsible for an Offence (All Levels of Offenses) by Year



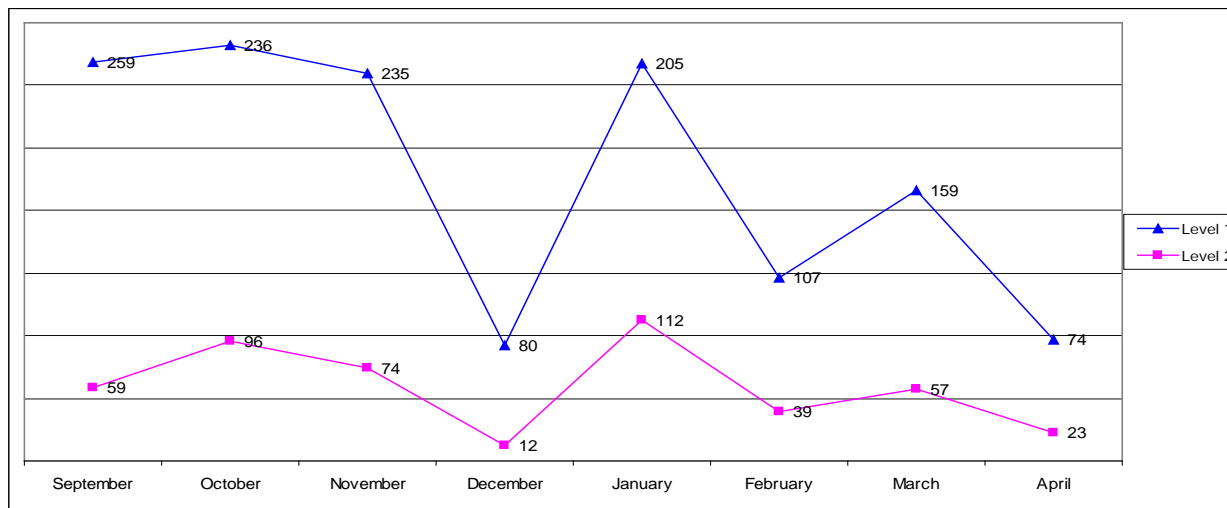
Breakdown of Total Number of Respondents Found Responsible for an Offence by Classification, Level, and Year



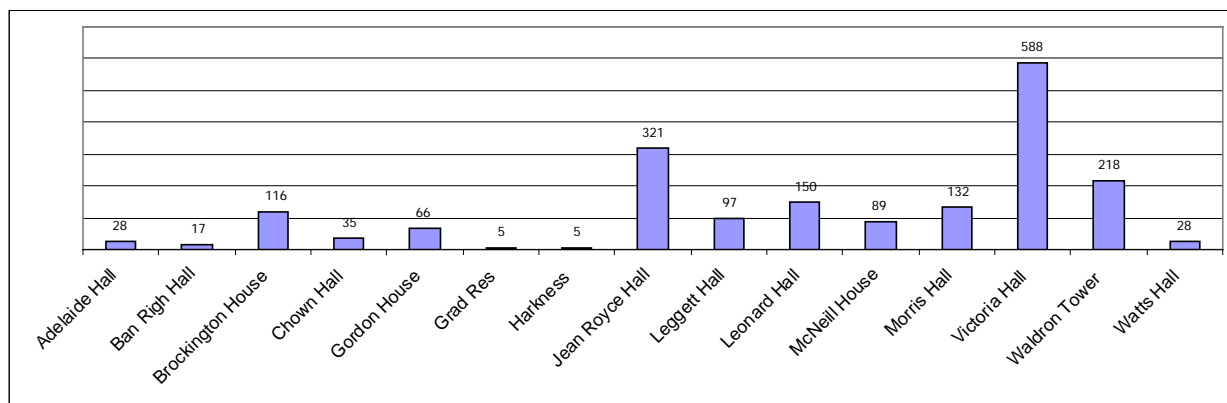
Please note that of the twenty-five (25) Level Three cases that occurred during the 2009-2010 academic year, forty-one respondents were involved. Of the twenty-five (25) Level Three cases, nine (9) cases were classified as Level Three – by nature cases and the remaining sixteen (16) cases were referred to the Level Three process as a result of the progression of offences.

Incidents by Classification 2009-2010

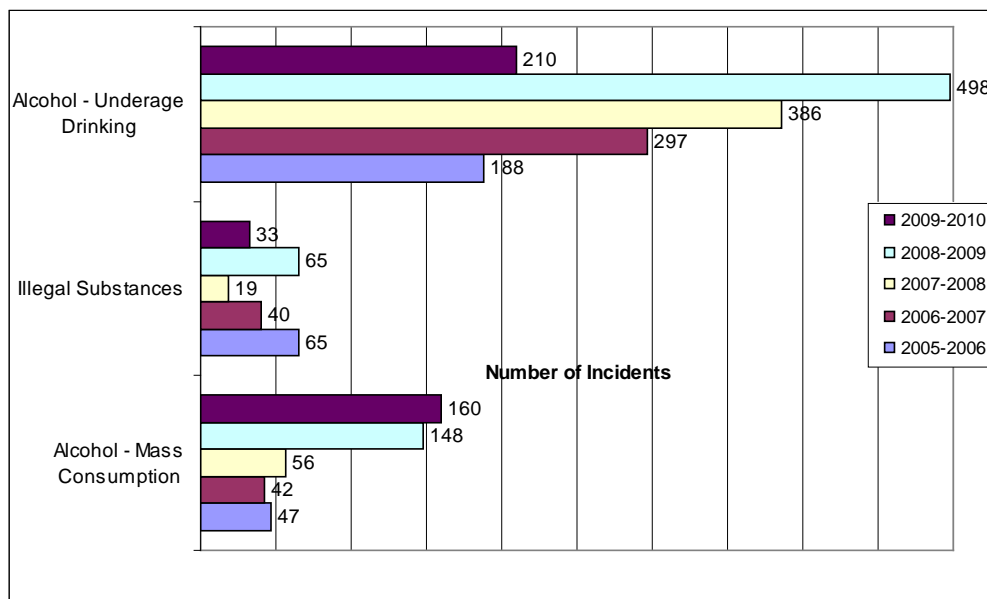
Level 1 and Level 2 Offences by Month



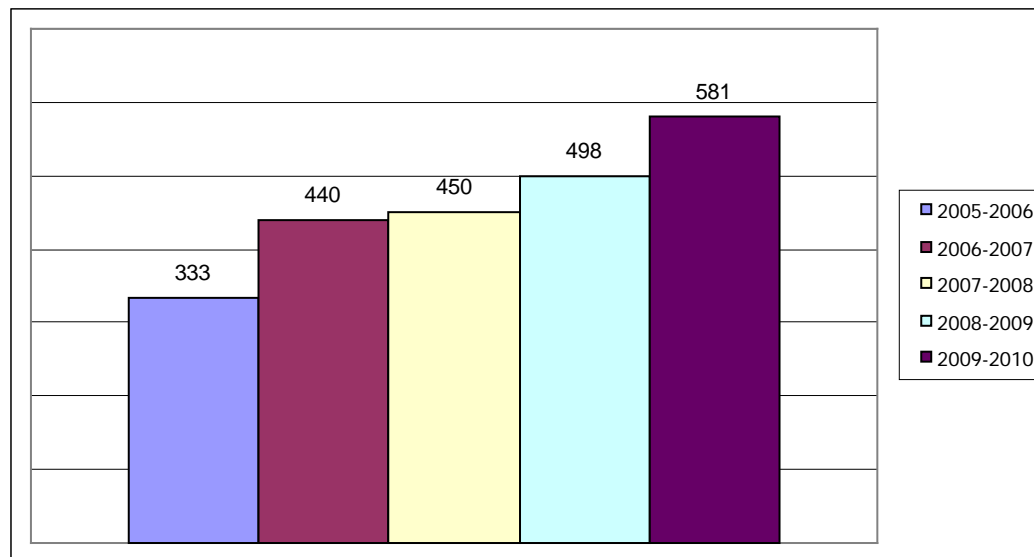
Total Offences by Residence Building



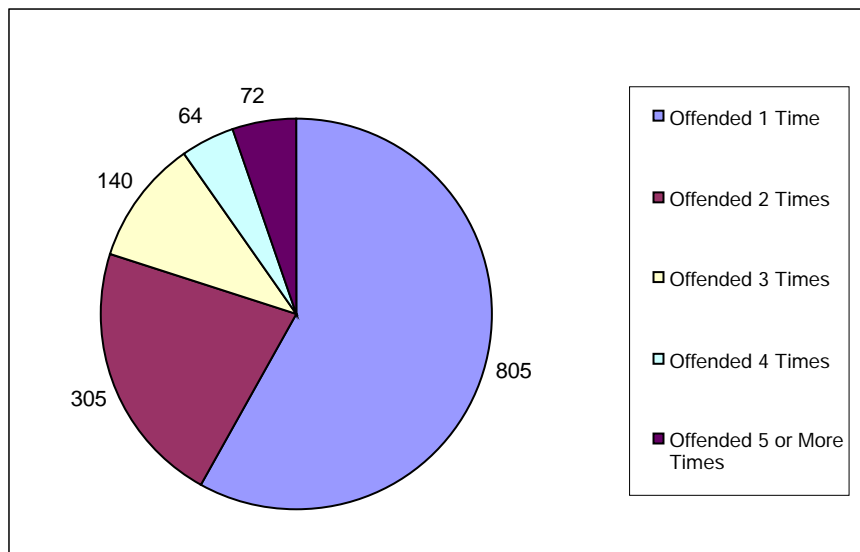
Alcohol (Underage Drinking and Mass Consumption) and Illegal Substances Offences by Type and Year



Rates of Recidivism Repeat Offenders by Year



Repeat Offenders, 2009-2010



Percentage of repeat offenders, 2009-2010:

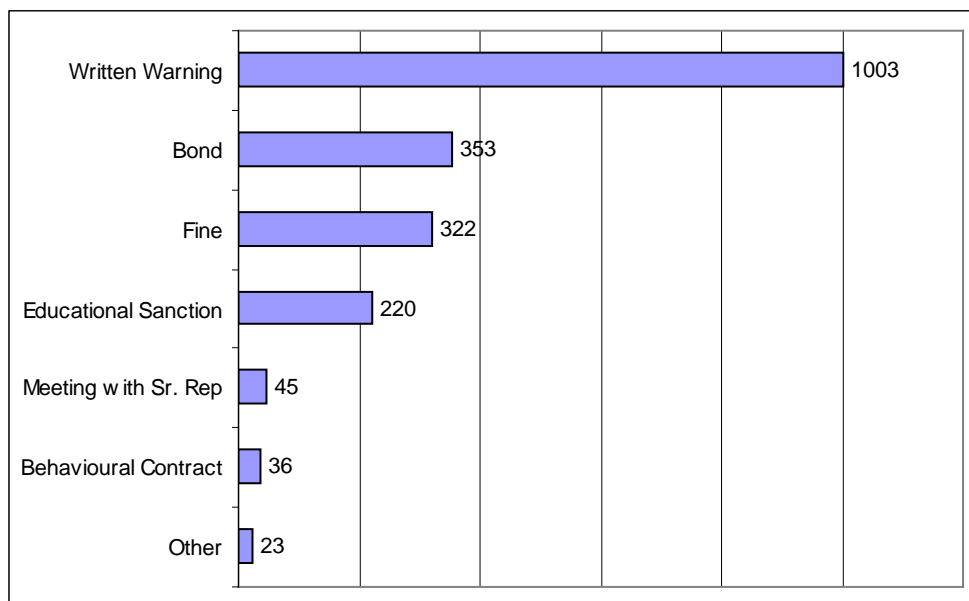
- 58.1% (805 incidents) of our students involved with the judicial system offended only once;
- 22% (305 incidents) of students involved with the judicial system offended twice;
- 10.1% (140 incidents) of students involved with the judicial system offended three times;
- 4.6% (64 incidents) of students involved with the judicial system offended four times; and
- 5.2% (72 incidents) of students involved with the judicial system offended five times.

Assigned Sanctions

Our sanctions are primarily educational and remedial in nature. Verbal warnings, written warnings, educational sanctions, community service, bonds and meetings with senior Residence Life representatives are designed to educate students about their responsibilities and to assist students in making positive, self-directed choices in the future. Additionally, we assign fines, behavioural contracts and other sanctions depending on the nature and progression of offences. "Other" sanctions include loss of privileges, restitution, relocation, and in most serious cases, suspension and/or termination of residence contract.

Some students are assigned more than one sanction on a given community standards violation. Therefore, the total number of sanctions does not correspond to the total number of offences for the 2009-2010 academic year.

Sanctions Assigned by Type, 2009-2010



Peer Judicial Board Activities

The Peer Judicial Board presides over cases involving Level Two incidents, repeat Level One incidents and appeals for Level One and Level Two cases. Please note that a second Level One offence is not considered a Level Two offence.

The Peer Judicial Board is composed of both volunteer Members-at-Large and paid Chairs who help to uphold Residence Community Standards. All Peer Judicial Board Members are students. Each week, members of the Peer Judicial Board convene for an informal peer judicial hearing to deliberate and render decisions on violations of community standards.

For the 2009-2010 year, there were 17 Members-at-Large and three (3) Chairs who presided over cases that came before the Peer Judicial Board. The Peer Judicial Board met 51 times and deliberated on 243 cases (which consisted of 127 hearings).

Appeals Committee

Respondents have the right to appeal Level One Offences and Peer Judicial Board decisions to an Appeals Committee. The Appeals Committee (comprised of two Members-at-Large and the Appeals Coordinator) discussed 42 cases:

- There were 32 Level One appeals and 10 Level Two appeals;
- The Appeals Committee granted 8 Level One appeals and 5 Level Two appeals.

Issues Addressed this Past Year

The Discipline Working Group (DWG) of the Senate Residence Committee met several times over the academic year and summer to review and modify our disciplinary process, with a view to improving its efficacy. In order to address the challenges of the existing system, the DWG reviewed the following proposed changes to the judicial system for the 2010-2011 academic year:

- Reducing the number of community standards rules in an effort to consolidate the meaning and intent of the community standards;
- Allowing for the application of alcohol related sanctions to alcohol related community standards offences without a specific progression; and
- Peer Judicial Board Chair salaries were increased to \$1000.00 annually from \$800.00 annually.

The DWG agreed that these changes are in keeping with the direction set by Senate, and has recommended that they be implemented this fall.

Looking Ahead

In keeping with their mandate, the Discipline Working Group has been asked to resume its annual review of the Residences judicial procedures and sanctions, specifically;

- Researching how best to collect and report our statistics
- Researching software and application tools to improve our statistical collection and reporting

It is anticipated that the tasks listed above will be undertaken in the upcoming fall months.

Report Prepared by:

S. Goffin-Boyd,
Former Residence Judicial Advisor

Report Submitted by:

K. Morrissey,
Residence Judicial Advisor

On behalf of the Discipline Working Group members:

H. Smith – Coordinator of Dispute Resolution Mechanisms
B. Crawford – Senate Residence Committee Representative
E. Schiavon – VP (Discipline), Main Campus Residents' Council
K. Lee – President, Jean Royce Hall Council
K. Morrissey – Residence Judicial Advisor, DWG Chair
