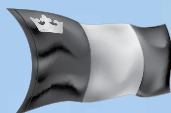


THE MIGHTY MISSISSIPPI

ABOARD THE LUXURIOUS *AMERICAN QUEEN*®
MINNEAPOLIS/RED WING TO NEW ORLEANS

AUGUST 5-20, 2018 • FROM \$3,099 USD PER PERSON

SPONSORED BY:



QUEEN'S UNIVERSITY
ALUMNI EDUCATIONAL TRAVEL



ACT NOW TO RECEIVE:

- 1-NIGHT PRE-CRUISE HOTEL STAY
- \$1,000 USD EARLY BOOKING SAVINGS
PER STATEROOM

IF BOOKED BY
JAN. 19,
2018



 **AMERICAN QUEEN**®
STEAMBOAT COMPANY
Uniquely American River Cruises

RIVER CRUISING

THE ORIGINAL
AMERICAN VACATION

ACT NOW TO RECEIVE:

- 1-NIGHT PRE-CRUISE HOTEL STAY
- \$1,000 USD EARLY BOOKING SAVINGS PER STATEROOM

IF BOOKED BY JAN. 19, 2018



ALUMNI EDUCATIONAL TRAVEL



Queen's University
Alumni Relations & Annual Giving
99 University Ave
Kingston, ON K7L 3N6

Cover Image:
American Queen

DEAR FELLOW ALUMNI AND FRIENDS,

You're invited to join us as we retrace the paths of early explorers on a cruise of the Mississippi River from Minnesota to Louisiana aboard the *American Queen*, a state-of-the-art steamboat fashioned after the ornamented vessels of long ago.

After a pre-cruise hotel stay in Minneapolis, we'll board the *American Queen* in Red Wing, and enjoy the breathtaking views as our rivership leisurely cruises from port to port. Each location can be easily explored from the Hop-On/Hop-Off motorcoaches that accompany the cruise.

Explore the historic remnants of La Crosse, view Dubuque's unique architecture, and uncover the history of the Quad Cities starting in Bettendorf. Enjoy Hannibal, Mark Twain's hometown, filled with the same character and charm found in the famed author's legendary tales, and St. Louis, with its recognizable 192-metre Gateway Arch and explore its diverse neighbourhoods. Walk the quaint town of New Madrid, and learn about its intriguing earthquake-riddled past before continuing to Memphis, home to Sun Studio and Elvis Presley's Graceland. Greenville, with its blues culture and gardening enthusiasm, is said to grow writers, while Vicksburg offers many monuments to the town's interesting Civil War history. Natchez, the oldest settlement on the Mississippi, is graced with stunning gardens and palatial mansions. Before concluding our journey in New Orleans, we'll uncover over three hundred years of history in Baton Rouge, stroll St. Francisville's breathtaking parks, and explore the impressive halls of Nottoway, the largest plantation house in the South.

This outstanding itinerary includes fresh regional cuisine, beautifully appointed accommodations, and fascinating shore excursions. Be sure to reserve your spot by January 19, 2018 to receive the one-night pre-cruise hotel stay as well as \$1,000 USD early booking savings per stateroom.

Don't miss this opportunity to explore storybook towns along the Mississippi with fellow alumni. We'd love to have you join us!

Cha Gheill!



Melanie McEwen, Artsci'87
Manager, Alumni Educational Travel
Alumni Relations & Annual Giving
Queen's University

**ALL ALUMNI, THEIR FAMILIES,
AND FRIENDS OF QUEEN'S UNIVERSITY
ARE WELCOME.**

SPACE ON THIS CRUISE IS LIMITED BOOK NOW!

877.333.0449 **CALL** 952.918.8945
FAX: 952.918.8975 www.GoNext.com



TRAVEL INSURANCE

We strongly suggest purchasing travel insurance. Travel insurance information will be sent to you by the Queen's University Alumni Educational Travel office with your confirmation letter.

ASSOCIATION DISCLAIMER

Queen's University will not be responsible for the financing, the arranging, or the conducting of these tours. They assume no liability or responsibility for damages or financial loss to person howsoever arising from the negligence, omission or otherwise of travel services arranged through Go Next, Inc. Refer to the General Terms and Conditions established by Go Next, Inc. with respect to participating in this tour.

OPERATOR/PARTICIPANT AGREEMENT

Go Next, Inc. (hereinafter GN), located at 8000 West 78th Street, Suite 345, Minneapolis, Minnesota 55439-2538, in return for full payment by you of the amount specified, is responsible to arrange for the transportation, accommodations and other services specified as included in this brochure as and to the extent you have selected them, and subject to the following terms and conditions. Unless expressly specified as included by this brochure, services, taxes and fees are not included.

RESPONSIBILITY: GN is responsible to you for arranging all included transportation, accommodations and other services. However, in the absence of negligence on its part, GN and the sponsoring association are not responsible for personal injury, property damage, or any other loss, claim or damage arising out of or related to goods or services offered or included. GN and the sponsoring association are not responsible for personal injury, property damage or any other loss, claim or damage related to or arising out of, in whole or in part, the acts or omissions of any direct air carrier, cruise line, hotel, ground operator, or other person not its direct employee or not under its exclusive control supplying any services or providing any goods offered or included. GN and the sponsoring association are not responsible for personal injury, property damage or any other loss, claim or damage arising out of, either in whole or in part, acts of God, weather, labour strife, government actions, mechanical breakdowns, war-like acts, terroristic activities or other causes reasonably beyond the respective control of GN and the sponsoring association. GN and the sponsoring association are not responsible for incidental or consequential losses or damages.

Neither GN nor the American Queen Steamboat Company (hereinafter AQSC) nor the sponsoring association are responsible for any penalty, loss or inconvenience resulting from air or land arrangements made independently by travellers, including non-refundable conditions, restricted travel or frequent flyer tickets.

PAYMENT: A deposit in the amount shown on the reservation form and a signed agreement for each person is required to secure reservations. Final payment is due as shown on the reservation form.

PRICES: GN RESERVES THE RIGHT TO INCREASE PRICES IN THE EVENT OF ANY INCREASED SECURITY OR FUEL RELATED SURCHARGES, OR FARE INCREASES IMPOSED BY THE AIRLINE OR CRUISE LINE THAT MAY BE IN PLACE AT THE TIME OF TICKETING OR TRAVEL, FOREIGN OR DOMESTIC TAX INCREASES, OR ADVERSE CURRENCY EXCHANGE FLUCTUATIONS, AFTER JANUARY 01, 2017. GN RESERVES THE RIGHT, IF NECESSARY OR ADVISABLE, TO SUBSTITUTE HOTELS BUT IS NOT OBLIGED TO DO SO.

BAGGAGE: GN CANNOT BE HELD RESPONSIBLE FOR LUGGAGE LOST OR DAMAGED. YOU SHOULD GIVE IMMEDIATE NOTICE OF ANY LOST OR DAMAGED LUGGAGE TO THE INVOLVED AIR CARRIER, HOTEL, CRUISE LINE AND TO YOUR OWN INSURANCE COMPANY.

AIRCRAFT AND CRUISE LINE BOARDING: GN CANNOT BE HELD RESPONSIBLE FOR AIRLINE OR CRUISE LINE DELAYS.

Aircraft and cruise line boarding privileges are limited to persons whose full payment and signed agreement have been received by GN and whose names are on the manifest given to the carrier before departure. Improper documentation, inadequate proof of identity, inadequate proof of age for children under 2, or any other reason may result in denial of boarding privileges. The air carrier and cruise line reserve the right to decline, accept or retain any person on the flight or cruise at any time within their sole discretion. If you are denied boarding privileges, you forfeit all monies paid and will be assessed any non-recoverable costs.

ADVANCE TRAVEL INFORMATION: Canadian citizens or permanent residents of Canada entering the U.S. are required to bring their passport. For other nationalities, passports are required to enter the U.S. It is your responsibility to check with your local U.S. embassy/consulate to confirm visa requirements and to obtain the proper visa/U.S. alien card (green card). U.S. citizens or permanent residents of the U.S. travelling exclusively inside U.S. borders do not need a passport or visa for travel. Homeland Security laws require that all guests travel with government-issued photo identification (ID) (such as a driver's licence) at all times. ID must be presented at the time of boarding. Guests without proper ID will be denied boarding. AQSC is required to provide all guests' ID information including ID number, expiration date, and place of issue to the Coast Guard and/or other government entities prior to the

vessel's departure. Guests must provide this information to AQSC in advance. Travel documents will not be released until received.

AQSC'S LAND PACKAGES/SHORE EXCURSIONS: Tours are operated in the various ports of call by AQSC or local tourist service companies contracted by the cruise line. They are not under the control of GN. Cancellation penalties may differ from the cruise program related penalties. AQSC may modify the cruise itinerary up to and during the voyage.

FEDERAL MARITIME COMMISSION PROTECTION: Under Public Law 89-777, the FMC requires vessels having berth or stateroom accommodations for 50 or more passengers and which embark passengers from U.S. ports to maintain acceptable evidence of financial responsibility to indemnify passengers for nonperformance of transportation. AQSC maintains an escrow agreement to protect passenger payments for water transportation. This escrow agreement has been reviewed and approved by the Federal Maritime Commission.

HOSTS AND LECTURERS: Advertised hosts and lecturers (if applicable) are subject to availability and may be contingent on a minimum number of travellers; therefore, they cannot be guaranteed.

NOTICES: Any complaints or claims against GN must be made in writing and received by GN within 90 days after scheduled termination of the trip. Any action or suit against GN must be commenced within 1 (one) year after scheduled termination of the trip or be forever barred.

The rights and remedies relating to cancellations and major changes prior to departure, made available under this agreement are in addition to any other rights or remedies available under applicable law. However, we offer any refunds under this agreement with the express understanding that the receipt of that refund by you waives all other remedies.

While Go Next makes every effort to adhere to the specifics shown in this brochure, all information contained herein is subject to change. Go Next is not responsible or liable for typographical errors, omissions or misprints.

INSURANCE: Travel insurance is available and can provide coverage for unforeseen circumstances that could disrupt your trip. See panel above for details.

IF YOU CHANGE PLANS OR CANCEL, YOUR RIGHTS TO A REFUND ARE LIMITED: The following charges will be assessed for cancellations.

If you cancel or change plans more than 120 days prior to departure, a full refund, less a \$350 USD per person administrative fee plus any applicable pre- and/or post-cruise program cancellation fees, is provided. Any refunds are provided only in accordance with the following schedule. Any requests for cancellation must be communicated to GN in writing. Applicable refunds, if any, will be made within 14 days after the cancellation.

CANCELLATIONS: Upon receipt of written cancellation from you, the following fees will apply:

Cruise Program cancellations received 120 days or more prior to departure, \$350 USD per person; 119-75 days prior to departure, 50% of total fare; 74-45 days prior to departure, 75% of total fare; 44-0 days prior to departure, 100% of total fare.

HEALTH: Any physical or mental condition requiring special medical attention or equipment must be disclosed in writing to GN at the time the participant makes a reservation. GN may reject the reservation of any person who, in the opinion of GN is unfit for travel or might be a danger to themselves or incompatible with others on the trip. Participants requiring special assistance, including without limitation those who permanently or periodically use a wheelchair, must be accompanied by someone who agrees to provide the required assistance. GN reserves the right to terminate the participation of any participant whose conduct or condition materially inconveniences other participants.

THERE ARE NO EXCEPTIONS OF ANY KIND (INCLUDING MEDICAL EXCEPTIONS) TO THESE POLICIES. No refunds will be made for any portion of the arrangements we have made for you that are not actually utilized by you. There is no variance from these policies for the services we arrange as described in this brochure.

California Seller of Travel Registration No. 2077280-40, Washington Seller of Travel Registration No. 602-900-725, Iowa Seller of Travel Registration No. 477

RESERVE YOUR MIGHTY MISSISSIPPI CRUISE TODAY!

SEND TO:

Queen's University
Alumni Relations & Annual Giving
99 University Ave
Kingston, ON K7L 3N6
800.267.7837 or 613.533.2060

**QUEEN'S UNIVERSITY ALUMNI
EDUCATIONAL TRAVEL (872-1)**
AUGUST 5-20, 2018
CLASS
YEAR

CORRESPONDENCE PREFERENCE: ☐ Email ☐ Mail

RESERVATION SELECTION:

CHOOSE ONE OF THE FOLLOWING PRE-CRUISE OPTIONS:

- ☐ CRUISE PROGRAM WITH 1-NIGHT PRE-CRUISE HOTEL STAY IN MINNEAPOLIS
☐ CRUISE PROGRAM WITHOUT 1-NIGHT PRE-CRUISE HOTEL STAY IN MINNEAPOLIS

PLEASE NOTE: Airfare and airport transfers are not included.

- ☐ I will make my own transportation arrangements. ☐ Please contact me to discuss air options.

Stateroom/Suite Category Preference: 1st choice _____ 2nd choice _____

Bed Preference: ☐ Twin (2 beds) ☐ Queen ☐ Single

Dinner Seating Preference: ☐ Early (5:15PM) ☐ Main (8:00PM)

All guests must travel with a government-issued photo ID.

GUEST 1: Full Name (as it appears on your government-issued photo ID)

<input type="text"/>	<input type="text"/>	<input type="text"/>	<input type="text"/>
First	Middle	Last	Title
Preferred Name (for name badge)	<input type="text"/>	<input type="checkbox"/> M <input type="checkbox"/> F Birth Date (MM/DD/YYYY)	<input type="text"/>

GUEST 2: Full Name (as it appears on your government-issued photo ID)

<input type="text"/>	<input type="text"/>	<input type="text"/>	<input type="text"/>
First	Middle	Last	Title
Preferred Name (for name badge)	<input type="text"/>	<input type="checkbox"/> M <input type="checkbox"/> F Birth Date (MM/DD/YYYY)	<input type="text"/>

Email Address

Mailing Address

City Province Postal Code

Main Phone Alternate Phone

Roomate's Name
(if different from above)

Adjacency Request

OPERATOR AND PARTICIPANT AGREEMENT:

Signatures are required from each person travelling, including parent and guardian signatures for travelling minors.
I have read, received a copy of, understand, and accept the terms and conditions stated in the Operator/Participant Agreement.

SIGN HERE X _____

SIGN HERE X _____

DEPOSITS: A deposit of \$950 USD per person is due with your reservation application. Make cheques payable to Go Next. Deposits may also be made by credit card. All major credit cards are accepted. **Full payment is required by cheque no later than April 6, 2018.** Reservations received after this date must be accompanied by full payment.

Please reserve _____ space(s). Enclosed is a deposit for \$ _____.

I authorize Go Next Inc. to charge my credit card for the deposit of \$ _____

Name (as it appears on your credit card) _____

SIGN

HERE X _____

Billing Address _____

☐ same as mailing address

Card Number _____ Security Code _____ Exp. Date _____

Making a deposit or acceptance or use of any vouchers, tickets, goods, or services shall be deemed consent to and acceptance of the terms and conditions stated in the applicable Operator/Participant Agreement, including limitations on responsibility and liability.

The personal information collected on this form is collected under the legal authority of the Royal Charter of 1841, as amended, and will be used for your reservation for the above-mentioned alumni travel program and for related correspondence; to keep you up to date on campus happenings; for fundraising purposes and university advancement activities; and to facilitate answering any University-related questions you may have. For additional clarification, please contact a representative of Queen's Alumni Travel program at 613.533.2060 or toll-free at 800.267.7837.



A JOURNEY LIKE NO OTHER

INCLUSIONS

There's never been a better time to rediscover America, and there's never been a better way to do it. Aboard a unique vessel that offers the aesthetic of traditional steamboat travel combined with the modern comfort of luxury cruising, take in the changing landscape as you sail down the Mississippi River.

Experience the bustle of river-town culture, and witness the ever-changing shoreline as your boat ambles leisurely with the current from port to port. With the vessel's opulent Victorian design, the onboard dedication to river lore and luxury, and ports chosen for their historical appeal, this two-week voyage aboard the 414-passenger *American Queen* offers the opportunity to experience the charm of the steamboat era.

- 14-night voyage aboard the *American Queen*, with all meals included
- Complimentary Hop-On Hop-Off Shore Excursions aboard a dedicated fleet of luxury coaches
- Exquisite regional dishes prepared by an award-winning culinary team
- Complimentary wine and beer with dinner
- Complimentary specialty coffees, bottled water, and soft drinks throughout the voyage
- Gracious service from a friendly staff
- Smart-casual attire—no formal wear is required
- Daily lectures by the Riverlorian, the onboard historian and culture expert
- Professional showboat-style entertainment, nightly dances, and calliope concerts

GO NEXT EXCLUSIVE BENEFITS

- **1-night pre-cruise hotel stay** at the Minneapolis Marriott City Center or similar accommodations, with breakfast, coverage of taxes, portage, and transfers to the *American Queen*
- **Private Go Next reception** including hot and cold canapés, wine, beer, and soft drinks
- **Complimentary bottle of wine** per stateroom
- **Services of an onboard Go Next Program Manager**



RIVER CRUISE ITINERARY

AUG 05 MINNEAPOLIS, MINNESOTA

Your journey begins with a one-night stay at the Minneapolis Marriott City Center, a four-star luxury hotel located in the heart of downtown Minneapolis.

AUG 06 MINNEAPOLIS/RED WING, MINNESOTA

Depart 5PM

Spend the morning at leisure in Minneapolis, then transfer to Red Wing to embark the *American Queen* at 3PM.

AUG 07 LA CROSSE, WISCONSIN

Arrive 8AM–Depart 3PM

With an exquisite view of the river, this city is set to inspire all who visit. Today, make note of lingering pieces of history along the streets and inside local breweries and historic homes and businesses.

AUG 08 DUBUQUE, IOWA

Arrive 12PM–Depart 5PM

Known as the Masterpiece on the Mississippi, Dubuque features a vibrant riverfront. The river views are especially breathtaking from the top of Dubuque's historic Fenelon Place Elevator—the world's shortest, steepest scenic railway affording impressive views of Iowa, Illinois, and Wisconsin.

AUG 09 DAVENPORT/BETTENDORF (QUAD CITIES), IOWA

Arrive 8AM–Depart 5PM

Davenport and Bettendorf are starting points for an exploration of the Quad Cities, five individual yet unified communities. Enjoy the diverse cultures of these melting-pot cities, and uncover the stories of the Quad Cities' past in the many museums, boutiques, and eateries.

AUG 10 HANNIBAL, MISSOURI

Arrive 8AM–Depart 5PM

Hannibal is best known as the boyhood home of America's favourite storyteller, Samuel Clemens, better known as Mark Twain, and the setting of *The Adventures of Tom Sawyer* and *The Adventures of Huckleberry Finn*. The town offers more parks per citizen than most towns in the Midwest and is included in the famous "50 Miles of Art."

LIFE ON THE WATER

Life on the *American Queen* is as unique and enriching as the riverboat tradition itself. Night after night, music fills the majestic two-deck-tall Grand Saloon, a stunning replica of the famed Ford's Theatre. Showboat-style cabaret acts and old-fashioned radio shows add variety and charm to the evening lineup. By day, the Riverlorian, your onboard historian, offers lectures and river lore. The Ladies' Parlor and Gentlemen's Card Room are meeting points for new friends. And the calliope, a steam-powered organ, beckons anyone inclined to play.



Grand Saloon



AUG 11 ST. LOUIS, MISSOURI

Arrive 12PM–Depart 5PM

St. Louis is known for its diverse neighbourhoods and the different cultures and traditions each one brings forth. The city is typically associated with its 192-metre stainless steel monument, the Gateway Arch, which stands on the banks of the Mississippi River to symbolize the westward expansion of the United States.

AUG 12 NEW MADRID, MISSOURI

Arrive 12PM–Depart 5PM

The oldest city west of the Mississippi, New Madrid is famous for enduring powerful earthquakes in the early 1800s and for the Civil War's Battle of Island Number Ten. Home to a storied past, this Missouri city retains the Southern charm it's held since the 1700s.

AUG 13 MEMPHIS, TENNESSEE

Arrive 5AM–Depart 5PM

Perched on a bluff overlooking the Mississippi, Memphis has been welcoming steamboats since before the Civil War. Today the city abounds with Americana, from legendary Beale Street to Elvis Presley's Graceland.

AUG 14 GREENVILLE, MISSISSIPPI

Arrive 12PM–Depart 6PM

The Heart and Soul of the Delta, this pleasant town is characterized by its museums, gardens, and many authors. Situated near Indianola, the birthplace of blues musician B.B. King, Greenville beckons with its own colourful attractions.

AUG 15 VICKSBURG, MISSISSIPPI

Arrive 8AM–Depart 5PM

Billed as the Red Carpet City of the South, Vicksburg is a unique blend of old and new and displays its heritage with tremendous pride. The site of a dramatic siege in the Civil War, Vicksburg is now a centre of Southern hospitality with a vibrant downtown area.

SOUTHERN HOSPITALITY

Creating plates inspired by culinary classics of America's South and utilizing the best of the season's offerings from stops along the way, an award-winning culinary team lends its expertise to the unique dining experience on the *American Queen*. Indulge in the elegance of the J.M. White Dining Room, or satisfy your appetite any hour of the day at the Front Porch Café as you sample delectable creations, from pork loin stuffed with andouille sausage to corn fritters and bourbon pecan pie.



J.M. White Dining Room



St. Louis

AUG 16 NATCHEZ, MISSISSIPPI

Arrive 8AM—Depart 5PM

One of the oldest European settlements in the lower Mississippi River valley and former capital of the state, Natchez is a Southern town with a rich heritage shaped by Native Americans and those of French, African, British, and Spanish descent.

AUG 17 BATON ROUGE, LOUISIANA

Arrive 1:30PM—Depart 5PM

Baton Rouge lives up to its motto, “Authentic Louisiana at Every Turn.” The capital city’s unique political history is reflected in a collection of memorable landmarks.

AUG 18 ST. FRANCISVILLE, LOUISIANA

Arrive 8AM—Depart 5PM

With more than 140 buildings and plantation homes on the National Register of Historic Places, this quaint town is a window to history. Here are the legacies of the Butlers, the Forts, the Barrows, and the Turnbulls—families who helped build the South.

AUG 19 NOTTOWAY, LOUISIANA

Arrive 8AM—Depart 6PM

Between Baton Rouge and New Orleans stands one of the South’s most magnificent plantation homes, Nottoway. Showcasing three floors, sixty-four bedrooms, twelve hand-carved Italian marble fireplaces, and twenty-two exterior columns, this extravagant mansion was constructed with 365 doors and windows—an opening for each day of the year.

AUG 20 NEW ORLEANS, LOUISIANA

Arrive 8AM

Disembark in the morning and bid farewell to the *American Queen*.

Note: Return flights should be scheduled to depart after 11:00AM.

Most ports of call include Hop-On Hop-Off Shore Excursions; Premium Shore Excursions are offered for an additional charge.

All port times are approximate. Itinerary, hotel, and shore excursions are subject to change.

OPULENT COMFORT

Welcome to the grand *American Queen*, a breathtaking combination of modern comfort and Victorian charm. All suites and staterooms aboard the *American Queen* feature flat-screen TVs, extravagant bedding and fine linens, and luxury hotel-style service. Sip sweet lemonade and partake in the convivial atmosphere of open verandas and the promenade, or enjoy a quiet respite in your elegant suite or deluxe stateroom, designed with all the comforts of home. Life aboard the *American Queen* flows like a gentle river—at your pace and according to your taste.



AA Stateroom



THE GREATEST VALUE

PRICING IN USD

		FARES/PERSON IF BOOKED AFTER JAN. 19	†FARES/PERSON IF BOOKED BY JAN. 19
OWNER'S SUITES • Exclusive Veranda	OS	\$14,999	\$14,499
Promenade Deck 32 sq. metres with 64 sq. metres of exclusive veranda			
LUXURY SUITES • Private or Open Veranda	LS	\$12,299	\$11,799
Promenade & Texas Decks 33 sq. metres			
SUITES • Open onto Veranda	AAA	\$8,899	\$8,399
Promenade Deck 21 sq. metres			
SUPERIOR OUTSIDE STATEROOMS • Open onto Veranda	AA	\$8,699	\$8,199
Promenade & Observation Decks 20 sq. metres			
DELUXE OUTSIDE STATEROOMS • Private Veranda	A	\$8,399	\$7,899
Texas Deck 18 sq. metres with 4 sq. metres of private veranda			
OUTSIDE STATEROOMS • Open onto Veranda	SO	\$9,999*	\$9,499
Observation, Texas & Cabin Decks 13-18 sq. metres	B	\$7,999	\$7,499
	C	\$7,599	\$7,099
OUTSIDE STATEROOMS • Bay Window	D	\$6,699	\$6,199
Cabin Deck 18 sq. metres			
INSIDE STATEROOMS	SI	\$5,299*	\$4,799
Observation & Texas Decks 7 sq. metres (SI) 12 sq. metres (E)	E	\$3,599	\$3,099

†Fares are per person, double occupancy, with the exception of SI and SO (single categories), and reflect the \$500 USD early booking savings per person (\$1,000 USD per stateroom) if booked by January 19, 2018. Onboard meals, refreshments, and entertainment are included. Airfare and airport transfers are not included. Port charges of \$358 USD per person and gratuities are additional.

*Single occupancy

C1

INCLUDED EXCURSIONS

In most ports of call, guests have the freedom to board a motor coach and enjoy a narrated tour that includes admission to select sites. There's plenty of time and opportunity to explore river-city landmarks—just hop off at a stop that intrigues you, and hop back on another motor coach when you're ready to continue. From the interactive toy trains of Big River Train Town in Hannibal to music history at the Memphis Rock 'n' Soul Museums, each port offers an exciting opportunity to explore.

