



Queen's
UNIVERSITY

2014-15 Enrolment Report

as of November 2, 2014

Queen's University Senate – December 2, 2014

This report details the university's annual fall term census of undergraduate and graduate enrolment.

Total Enrolment

The preliminary full-time for-credit headcount for 2014-15 is **21,667***, slightly higher than the Senate-approved planned enrolment target of 21,441 for this academic year.

Undergraduate	Planned Fall 2014	Actual 2014
Undergraduate Direct Entry		
Arts and Science (excl. Distance Studies BA1)	10,346	10,377
Engineering	2,758	2,825
Commerce	1,803	1,886
Nursing	361	349
Undergraduate Second Entry		
Education (Year 5 and Consec.)	657	726
Law	564	556
Medicine	414	400
Nursing-Advanced Standing	73	95
Less students away on exchange	-224	-248
<i>Students here on exchange (non-fee paying)</i>	394	447
Kingston Campus Undergraduate Total**	17,146	17,413
Other Undergraduates		
(BISC, Distance, Away on Exchange)	391	420
Postgraduate Medicine	488	513
Graduate	Planned Fall 2014	Actual 2014
Research and Professional Master	1,738	1,714
Doctoral	1,243	1,205
Non-degree	24	15
School of Business		
Masters	669	733
Non-degree	136	101

*The preliminary headcount of 21,667 does not include the 447 incoming exchange students on campus, as these students do not pay their tuition to Queen's.

**Of the 267 additional undergraduate students on campus, 138 are first-year students.

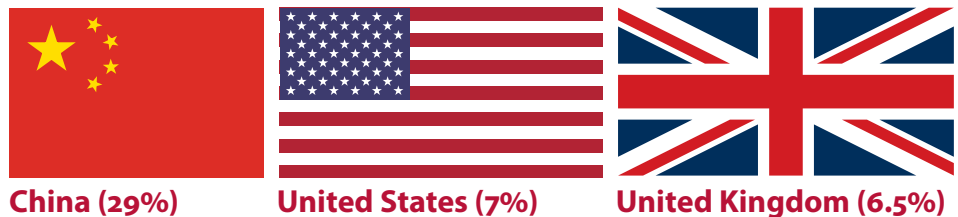
These numbers are all based on the Enrolment Summary chart on pg.11.

Total International Enrolment

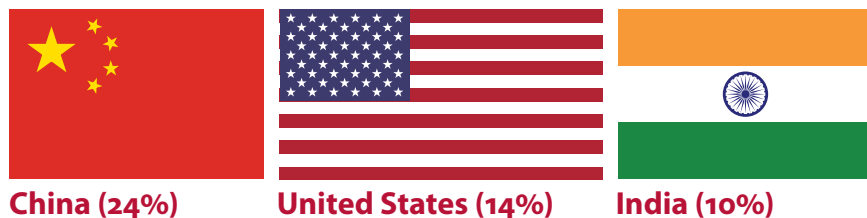
Increasing the number of international students at Queen's is an institutional priority. In 2014-15, there are **1,963** undergraduate and graduate international students (for-credit full and part-time, and including exchange) from **109** countries, up **17%** over 2013-14 and **24%** over 2012-13.

The international student population is **8.3%**.

The top 3 countries of citizenship among international undergraduate students are:



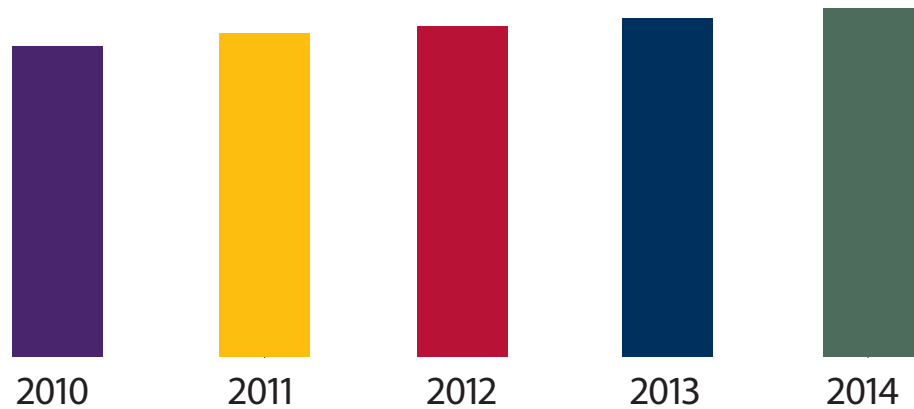
The top 3 countries of citizenship among international graduate students are:



6% of the full-time undergraduate population and **24.7%** of the full-time graduate population are international students, including exchange students.

The First-Year Class Applications

26,479 28,106 28,253 28,912 30,506

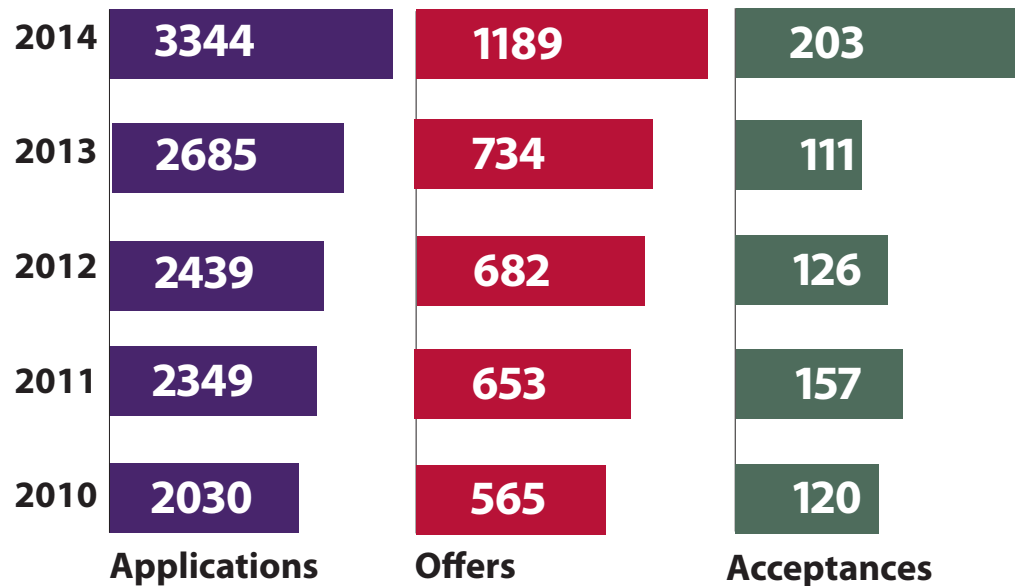


Applications for 2014-15 increased by **5.5%**, compared to **2.1%** province-wide.

Applications from Ontario high school students rose by **3%**, compared to a **-3.4%** province-wide decrease among Ontario high school students applying to Ontario universities.

Applications from students not attending an Ontario high school increased by **13%**, compared to a **10.6%** increase province-wide. Of this 13% increase at Queen's, **47%** were from international students.

The First-Year Class International Recruitment



To support increased international enrolment, Queen's now has a full-time recruiter based in Shanghai who is working to raise the university's profile by attending educational fairs, and visiting schools to speak to students, guidance counsellors and teachers, and give presentations. In addition, webinars have been introduced for prospective students who can't easily come to campus.

In September 2014, ATLAS, an early move-in program for incoming international students, was launched to help ease the transition to Canada and Kingston.

Results: For 2014-15, applications from international students increased **25%**; offers rose **62%**; and acceptances increased **83%**.

International students make up **4.8%** of the incoming class.

The First-Year Class

First-year direct-entry undergraduate enrolment

Faculty	Plan	Actual
Arts and Science	2,750	2,757
Engineering	680	732
Commerce	475	557
Nursing	92	89
Kingston Campus total	3,997	4,135
Other (BISC and distance studies)	140	135

Every fall, undergraduate admission staff visit with students at close to 1,000 high schools and post-secondary fairs across Canada, in seven U.S. states, and in India, China, Hong Kong, the United Kingdom and Turkey.

In addition to events held across Western Canada each spring, events have been established in Toronto for prospective students with offers of admission to provide additional opportunities to talk with them about the unique student experience and living and learning environment.

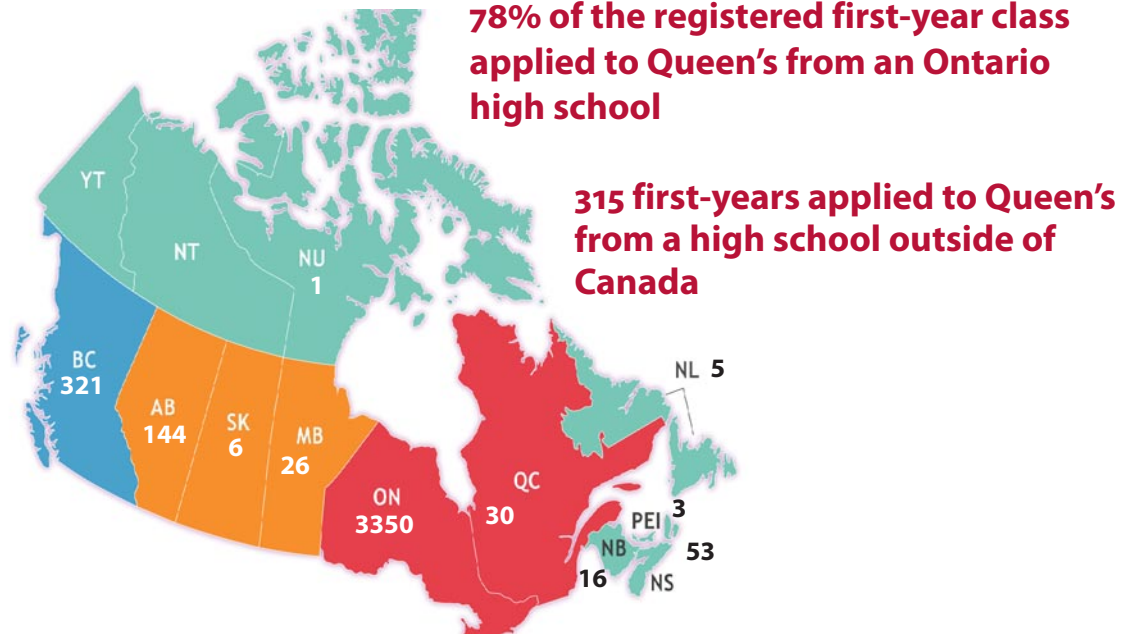
Demand for Queen's programs continues to be high.

In some faculties, the yield rate (the number of acceptances vs the number of offers) was unexpectedly high. Acceptance rates were very strong and exceeded expectations in many programs.

The First-Year Class

◀ Incoming undergraduate class average – **88.4%**

Geographic Distribution of the high schools of registered first-years



90% of first-years were 18 years old or younger on the first day of the term

Gender split – First-year undergraduate students



Gender split – First-year Master's and PhD students



The First-Year Class Aboriginal Enrolment



Since 2011-2012, Queen's has implemented targeted recruitment and outreach activities in an effort to increase Aboriginal enrolment. Since then, among self-identified Aboriginal students:

- Applications have increased by **30%**
- Offers have increased by **61%**
- Acceptances have increased by **93%**

Year 1-2 undergraduate retention rate among self-identified Aboriginal students:

93% in 2014

84% in 2013

Retention and Graduation Rates

Queen's year 1-2 undergraduate retention rate and 7-year graduation rate are among the highest in the country.

Total year 1-2 undergraduate retention rate

in 2013: **94.6%**

in 2012: **94.5%**

Upper-year transfer students

In 2013-14, new targeted recruitment and outreach activities were implemented to increase the number of external undergraduate transfer students to Queen's.

As a result, in 2014-15, there are **136** new upper-year transfer students at the university, an increase of **48%** over 2013-14.

7-year graduation rate

Among the cohort of students who started their studies at Queen's in 2006, **87.7%** had completed their degrees by 2013.

Among the 2005 cohort: **85%**

Among the 2004 cohort: **87%**

Graduate completion rates

5-year Master's completion/promotion rate: **89.5%**

in 2012 (2007 cohort).

5-year PhD retention/completion rate: **83%**

in 2012 (2007 cohort).

9-year PhD completion rate: **77.7%** (2003 cohort).

This is the second highest within the U15 group of Canadian universities.

Student Fall Headcount Intake

As of 2-Nov-14 Program	2013 Final Actual		2014 Planned		2014 Prelim Actual		2015 Planned		2016 Planned	
	First	Upper	First	Upper	First	Upper	First	Upper	First	Upper
	Year	Year	Year	Year	Year	Year	Year	Year	Year	Year
Undergraduate (Full-Time)										
Arts & Science										
BA/BAH *	1,275	25	1,405	125	1,364	29	1,510	125	1,510	125
BSC/BSCH *	765	15	825	70	812	20	1,025	70	1,025	70
BFAH	27	0	30		22	0	30		30	
BMUS	17	1	30		17	2	30		30	
BCMP/BCMPH	103	4	100	5	131	8	100	5	100	5
BPHEH	50	2	50		53	1	75		75	
BSCH KINE	89	1	85		94	0	105		105	
Con-Ed Arts/Science/Music	239	0	225		264	0	225		225	
Distance Studies (BA1)	10	0	20		18	4	25		25	
Non-Degree	0	0	0		0	0	0		0	
SGS Qualifier	0	0	0		0	0	0		0	
Subtotal Arts & Science	2,575	48	2,770	200	2,775	64	3,125	200	3,125	200
Commerce	459	1	475	20	557	0	475	20	475	20
Engineering *	688	13	680	13	732	3	730	13	730	13
Nursing	91		92		89		92		92	
Subtotal Direct Entry	3,813	62	4,017	233	4,153	67	4,422	233	4,422	233
Education (Yr 5 & Consec)		658		647		716		542		489
Law	165		205		206		208		208	
Medicine **	100		100		100		100		100	
Nursing-Advanced Standing		37		40		59		40		40
Subtotal Second Entry	265	695	305	687	306	775	308	582	308	529
Subtotal Undergraduate (Fac/School)	4,078	757	4,322	920	4,459	842	4,730	815	4,730	762
Bader ISC	103		120		117		120		120	
Post-Graduate Medicine	175		175		182		175		175	
Graduate (Full-Time)										
School of Grad Studies										
Research Masters	581		609		584		633		648	
Professional Masters	348		372		366		371		378	
Doctoral	258		271		253		283		289	
Non-Degree	0		15		5		25		25	
Subtotal SGS	1,187		1,267		1,208		1,312		1,340	
School of Business										
Masters	536		419		595		392		394	
Non-Degree	81		136		101		146		156	
Subtotal QSB	617		555		696		538		550	
Subtotal Graduate	1,804		1,822		1,904		1,850		1,890	
Budgeted Total Enrolment	6,160	757	6,439	920	6,662	842	6,875	815	6,915	762

*Note: 2013 intake actuals have been restated to reflect true new intake. Previously, stopouts were included.

** Planned adjusted to exclude international.

This chart does not include incoming exchange students on campus, as these students do not pay tuition at Queen's.

Enrolment Summary

As of 2-Nov-14 Program	Fall Full-Time Headcount				
	Final Actual	Planned	Prelim Actual	Planned	Planned
	Fall 2013	Fall 2014	Fall 2014	Fall 2015	Fall 2016
Undergraduate					
Arts & Science					
BA/BAH	5,318	5,419	5,384	5,639	5,779
BSC/BSCH	3,019	3,118	3,100	3,402	3,588
BFAH	82	78	74	82	98
BMUS	106	103	89	106	113
BCMP/BCMPH	328	337	394	344	348
BPHEH	203	207	207	229	250
BSCH KINE	339	355	364	378	398
Con-Ed Arts/Science/Music	634	678	718	673	660
Distance Studies (BA1)	16	22	32	45	70
Non-Degree	51	51	47	51	51
SGS Qualifier	0	0	0	0	0
Subtotal Arts & Science	10,096	10,368	10,409	10,949	11,355
Commerce	1,704	1,803	1,886	1,849	1,867
Engineering	2,696	2,758	2,825	2,832	2,900
Nursing	358	361	349	368	371
Subtotal Direct Entry	14,854	15,290	15,469	15,998	16,493
Education (Yr 5 & Consec)	673	657	726	552	754
Law	514	564	556	594	616
Medicine	406	414	400	422	430
Nursing-Advanced Standing	79	73	95	75	75
Subtotal Second Entry	1,672	1,708	1,777	1,643	1,875
Subtotal Undergraduate (Fac/School)	16,526	16,998	17,246	17,641	18,368
Bader ISC	136	145	140	150	155
Post-Graduate Medicine	488	488	513	488	488
Graduate					
School of Grad Studies					
Research Masters	1,099	1,146	1,122	1,187	1,215
Professional Masters	556	592	592	589	599
Doctoral	1,196	1,243	1,205	1,288	1,308
Non-Degree	7	24	15	34	34
Subtotal SGS	2,858	3,005	2,934	3,098	3,156
School of Business					
Masters	675	669	733	676	679
Non-Degree	81	136	101	146	156
Subtotal QSB	756	805	834	822	835
Subtotal Graduate	3,614	3,810	3,768	3,920	3,991
Budgeted Total Enrolment	20,764	21,441	21,667	22,199	23,002

This chart does not include incoming exchange students on campus, as these students do not pay tuition at Queen's.

Details for Selected Student Subgroups

As of 2-Nov-14 Student Subgroup	Fall Headcount				
	Final Actual Fall 2013	Projected Fall 2014	Prelim Actual Fall 2014	Projected Fall 2015	Projected Fall 2016
Part-Time Undergraduate	1,097	1,097	1,167	1,097	1,097
Summer Undergraduate	--	--	--	--	--
Undergraduate Exchange					
Away on Exchange	218	224	248	227	234
Here on Exchange	394	394	447	394	394
Net Exchange	-176	-170	-199	-167	-160
Undergraduate Distance Career	16	22	32	45	70
Part-Time Graduate	430	491	411	524	536
* International Undergrad (as % of Total)	2.6	2.7	3.0	2.7	2.8
* International Graduate (as % of Total)	13.3	12.9	15.2	13.1	13.1

*These percentages do not include incoming international exchange students or dual-degree students (including co-tutelle PhD students or Queen's – Cornell students), who do not pay tuition at Queen's. See page 3 for more information about international enrolment.