



Queen's  
UNIVERSITY

# 2015-16

## Enrolment Report

as of November 2, 2015

Queen's University Senate – December 1, 2015

This report details the university's annual fall term census of undergraduate and graduate enrolment.

## Total Enrolment

The preliminary full-time for-credit headcount for 2015-16 is **22,630\***, slightly higher than the Senate-approved planned enrolment target of 22,019 for this academic year.

<b>Undergraduate</b>	<b>Planned Fall 2015</b>	<b>Actual 2015</b>
<b>Undergraduate Direct Entry</b>		
Arts and Science (excl. Distance Studies BA1)	10,808	10,937
Engineering	2,861	2,946
Commerce	1,910	1,922
Nursing	345	340
<b>Undergraduate Second Entry</b>		
Education (Year 5 and Consec.)	565	545
Law	565	592
Medicine	398	401
Nursing-Advanced Standing	94	102
Less students away on exchange	-234	-234
<i>Students here on exchange (non-fee paying)</i>	462	462
Kingston Campus Undergraduate Total	17,774	18,013
<b>Other Undergraduates</b>		
(BISC, Distance, Away on Exchange)	433	419
Postgraduate Medicine	518	530

<b>Graduate</b>	<b>Planned Fall 2015</b>	<b>Actual 2015</b>
Research and Professional Master	1,647	1,902
Doctoral	1,117	1,270
Non-degree	28	15
Smith School of Business		
Masters	828	810
Non-degree	136	133

\*The preliminary headcount of 22,630 does not include the 462 incoming exchange students on campus, as these students do not pay their tuition to Queen's.

These numbers are all based on the Enrolment Summary chart on pg.11.

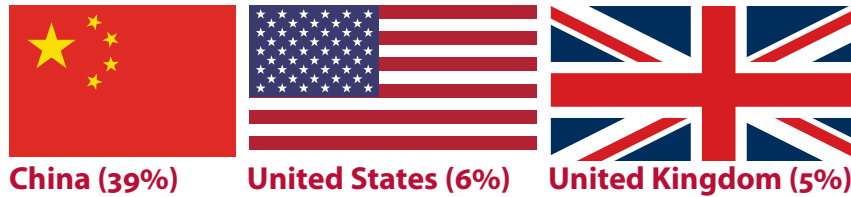
# International Enrolment

Increasing the number of international students at Queen's is an institutional priority. In 2015-16, there are **2,239** undergraduate and graduate international students (for-credit full and part-time, and including exchange) from **106** countries, up **14%** over 2014-15 and **41%** over 2012-13.

The international student population is **9.2%**.

**Undergraduate: 7.2%** of the full-time undergraduate population are international students.

The top 3 countries of citizenship among international undergraduate students are:



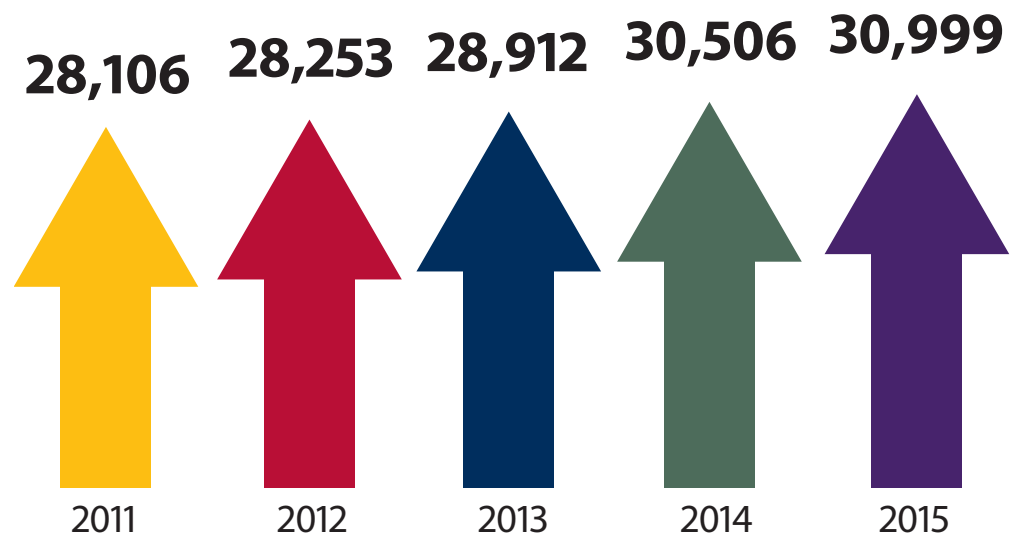
**Graduate: 24.8%** of the full-time graduate population are international students, including exchange students.

The top 3 countries of citizenship among international graduate students are:



Attendance at graduate-level recruitment fairs in China and Brazil, and active recruitment of upper-year undergraduate international students already in Canada, has increased interest in Queen's. In addition, a new website to help ease the transition to Queen's and graduate studies, SGS Habitat: Coming from Away, provides resources, tips and supports for international graduate students.

## The First-Year Class: Applications



Applications for 2015-16 increased by **1.6%**, compared to **0%** province-wide. Applicants selecting Queen's as 1st choice increased by **4.4%**.

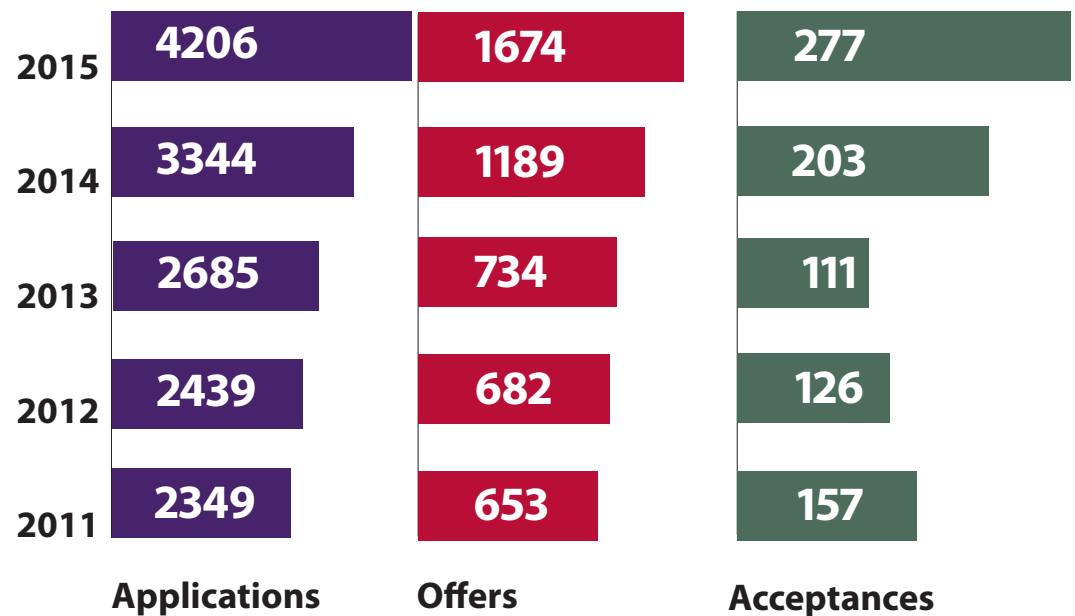
Applications from Ontario high school students were unchanged, compared to a **-0.6%** province-wide decrease among Ontario high school students applying to Ontario universities.

Applications from students not attending an Ontario high school increased by **7%**, compared to a **1.6%** increase province-wide.

## Graduate: Applications

Total applications, both domestic and international, to graduate programs increased by **6.2%** over 2014-15.

## The First-Year Class International Recruitment



Queen's full-time recruiter based in Shanghai continues to raise the university's profile by attending educational fairs, and visiting schools to speak to students, guidance counsellors and teachers, and give presentations. Webinars were successfully introduced to reach prospective students who can't easily come to campus.

The ATLAS program, launched in 2014, was expanded in 2015 to include pre-arrival webinars, as well as on-campus sessions, to help ease the transition to Canada and Kingston.

**Results:** For 2015-16, applications from international students increased **25.7%**; offers rose **40.7%**; and acceptances increased **36.5%**.

International students make up **6.2%** of the incoming class.

Year 1-2 undergraduate retention rate among international students: **93%** in 2015.

# The First-Year Class

## First-year direct-entry undergraduate enrolment

Faculty	Plan	Actual*
Arts and Science	3,100	3,199
Engineering	730	740
Commerce	475	489
Nursing	92	86
Kingston Campus total	4,397	4,514
Other (BISC and distance studies)	145	134

*\*Total Actual - includes returning first-year students*

Every fall, undergraduate admission staff visits with students at close to 1,000 high schools and post-secondary fairs across Canada, in 12 U.S. states, and in India, China, Hong Kong, the United Kingdom, Europe, United Arab Emirates and Turkey.

The Undergraduate Admission office, along with representatives from faculties and schools, and senior administrators, participated in events across western Canada, southern Ontario, and in Halifax and Boston for prospective students, with offers of admission. These events provide opportunities for students to learn more about the living and learning environment at Queen's. New this year, was a very well-attended event for students from Kingston and eastern Ontario.

Demand for Queen's programs continues to be high. Increased enrolment targets in Arts and Science were achieved, and overall yield was consistent with projections.

## Year 1 Graduate Enrolment:

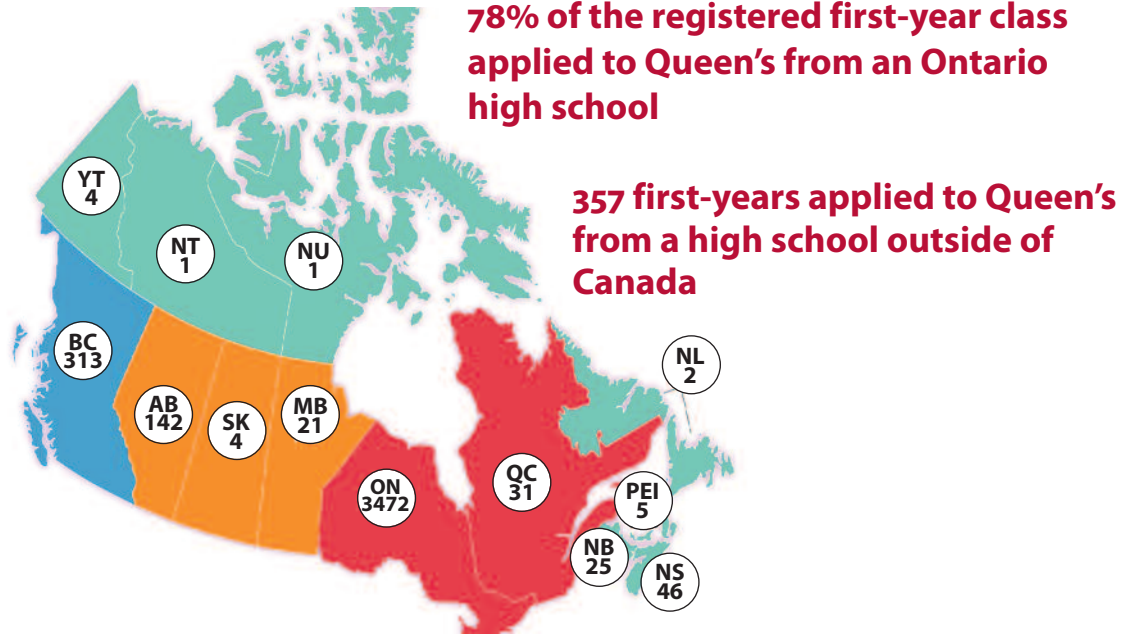
Masters: **1,762**

PhD: **250**

# The First-Year Class

◀ Incoming undergraduate class average – **88.1%**

## Geographic distribution of the high schools of registered first-years



**89% of first-years were 18 years old or younger on the first day of the Fall term**

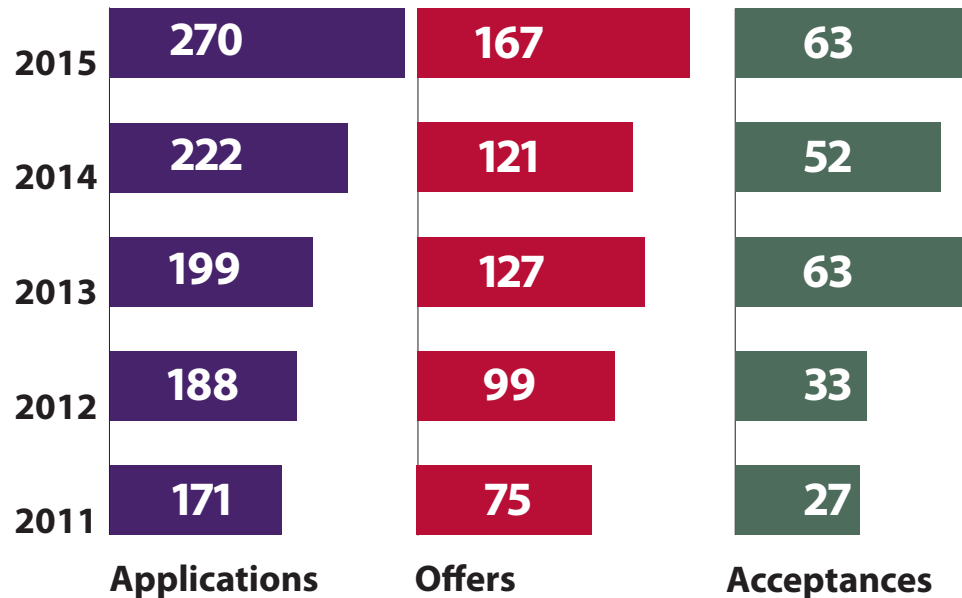
### Gender split – First-year undergraduate students



### Gender split – First-year Master's and PhD students



## The First-Year Class Aboriginal Enrolment



Since 2011-2012, Queen's has implemented targeted recruitment and outreach activities in an effort to increase Aboriginal enrolment. Among self-identified Aboriginal students:

- Applications have increased by **58%**
- Offers have increased by **123%**
- Acceptances have increased by **133%**

Year 1-2 undergraduate retention rate among self-identified Aboriginal students:

**96%** in 2015

**93%** in 2014



## Retention and Graduation Rates

Queen's year 1-2 undergraduate retention rate and 7-year graduation rate are among the highest in the country.

Total year 1-2 undergraduate retention rate  
in 2015: **94.3%** (preliminary)  
in 2014: **94.8%**

## Upper-year transfer students

Targeted recruitment and outreach activities continue to increase the number of external undergraduate transfer students to Queen's. As a result, in 2015-16, there are **155** new upper-year transfer students at the university, an increase of **14%** over 2014-15.

## 7-year graduation rate

Among the cohort of students who started their studies at Queen's in 2008, **85.3%** (preliminary) had completed their degrees by 2014.

Among the 2007 cohort: **86.9%**

Among the 2006 cohort: **87.7%**

## Graduate completion rates

5-year Master's completion rate: **84.2%**  
in 2013 (2008 cohort). The second highest within the U15 group of Canadian universities.

An additional **11.8%** of this cohort were promoted to the PhD.

5-year PhD retention/completion rate: **86.2%**  
in 2013 (2008 cohort).

9-year PhD completion rate: **78.4%** (2004 cohort).  
This is the third highest within the U15 group.

# Student Fall Headcount and Intake

As of 2-Nov-15 Program	2014 Final Actual		2015 Planned Headcount		2015 Prelim Actual Intake*		2016 Planned Headcount		2017 Planned Headcount	
	First Year	Upper Year	First Year	Upper Year	First Year	Upper Year	First Year	Upper Year	First Year	Upper Year
<b>Undergraduate (Full-Time)</b>										
Arts & Science										
BA/BAH	1,358	27	1,510	80	1,415	29	1,510	100	1,510	125
BSC/BSCH	806	20	1,005	35	984	20	1,005	55	1,005	70
BFAH	22		30		34	1	30		30	
BMUS	17	2	20		20	1	20		20	
BCMP/BCMPH	130	8	130	5	153	6	130	5	130	5
BPHEH	53	1	55		56		55		55	
BSCH KINE	94		125		117		125		125	
Con-Ed Arts/Science/Music	264		225		221		225		225	
Distance Studies (BA1)	11	2	25		15	2	25		25	
Non-Degree	0	0	0		0	0	0		0	
<b>Subtotal Arts &amp; Science</b>	<b>2,755</b>	<b>60</b>	<b>3,125</b>	<b>120</b>	<b>3,015</b>	<b>59</b>	<b>3,125</b>	<b>160</b>	<b>3,125</b>	<b>200</b>
Commerce	555		475	10	483		475	10	475	10
Engineering	711	22	730	13	729	28	730	13	730	13
Nursing	88		92		84		92		92	
<b>Subtotal Direct Entry</b>	<b>4,109</b>	<b>82</b>	<b>4,422</b>	<b>143</b>	<b>4,311</b>	<b>87</b>	<b>4,422</b>	<b>183</b>	<b>4,422</b>	<b>223</b>
Education (Yr 5 & Consec)		726		565		524		491		542
Law	206		200		201		200		200	
Medicine	100		100		100		100		100	
Nursing-Advanced Standing		58		40		45		40		40
<b>Subtotal Second Entry</b>	<b>306</b>	<b>784</b>	<b>300</b>	<b>605</b>	<b>301</b>	<b>569</b>	<b>300</b>	<b>531</b>	<b>300</b>	<b>582</b>
<b>Subtotal Undergraduate (Fac/School)</b>	<b>4,415</b>	<b>866</b>	<b>4,722</b>	<b>748</b>	<b>4,612</b>	<b>656</b>	<b>4,722</b>	<b>714</b>	<b>4,722</b>	<b>805</b>
Bader ISC	117		120	20	101	25	120	20	120	20
Post-Graduate Medicine	182		181		184		183		184	
<b>Graduate (Full-Time)</b>										
School of Grad Studies										
Research Masters	564		570		586		592		567	
Professional Masters	384		425		489		436		462	
Doctoral	258		296		250		276		291	
Diploma	4		24		13		43		43	
Certificate	1		0		0		0		0	
<b>Subtotal SGS</b>	<b>1,211</b>		<b>1,315</b>		<b>1,338</b>		<b>1,347</b>		<b>1,363</b>	
Smith School of Business										
Masters	473		576		541		584		609	
Diploma	101		136		133		156		156	
<b>Subtotal QSB</b>	<b>574</b>		<b>712</b>		<b>674</b>		<b>740</b>		<b>765</b>	
<b>Subtotal Graduate</b>	<b>1,785</b>		<b>2,027</b>		<b>2,012</b>		<b>2,087</b>		<b>2,128</b>	
<b>Budgeted Total Enrolment</b>	<b>6,499</b>	<b>866</b>	<b>7,050</b>	<b>768</b>	<b>6,909</b>	<b>681</b>	<b>7,112</b>	<b>734</b>	<b>7,154</b>	<b>825</b>

\* Students new to Queen's (not including returning first-years)

This chart does not include incoming exchange students on campus, as these students do not pay tuition at Queen's.

# Enrolment Summary

As of 2-Nov-15 Program	Fall Full-Time Headcount				
	Final Actual	Planned	Prelim Actual	Planned	Planned
	Fall 2014	Fall 2015	Fall 2015	Fall 2016	Fall 2017
<b>Undergraduate</b>					
Arts & Science					
BA/BAH	5,385	5,527	5,565	5,711	5,899
BSC/BSCH	3,100	3,358	3,384	3,560	3,746
BFAH	74	75	84	91	89
BMUS	89	87	81	88	87
BCMP/BCMPH	394	405	493	418	422
BPHEH	207	206	207	207	209
BSCH KINE	364	402	390	437	470
Con-Ed Arts/Science/Music	718	700	687	683	653
Distance Studies (BA1)	32	59	59	83	80
Non-Degree	48	48	46	48	48
<b>Subtotal Arts &amp; Science</b>	<b>10,411</b>	<b>10,867</b>	<b>10,996</b>	<b>11,326</b>	<b>11,703</b>
Commerce	1,887	1,910	1,922	1,909	1,938
Engineering	2,826	2,861	2,946	2,907	2,927
Nursing	349	345	340	343	340
<b>Subtotal Direct Entry</b>	<b>15,473</b>	<b>15,983</b>	<b>16,204</b>	<b>16,485</b>	<b>16,908</b>
Education (Yr 5 & Consec)	726	565	545	780	733
Law	556	565	592	595	582
Medicine	400	398	401	397	394
Nursing-Advanced Standing	95	94	102	79	79
<b>Subtotal Second Entry</b>	<b>1,777</b>	<b>1,622</b>	<b>1,640</b>	<b>1,851</b>	<b>1,788</b>
<b>Subtotal Undergraduate (Fac/School)</b>	<b>17,250</b>	<b>17,605</b>	<b>17,844</b>	<b>18,336</b>	<b>18,696</b>
Bader ISC	140	140	126	140	140
Post-Graduate Medicine	513	518	530	522	526
<b>Graduate</b>					
School of Grad Studies					
Research Masters	1,095	984	1,168	1,023	1,024
Professional Masters	611	663	734	714	755
Doctoral	1,205	1,117	1,270	1,146	1,162
Diploma	4	24	15	43	43
Certificate	11	4	0	0	0
<b>Subtotal SGS</b>	<b>2,926</b>	<b>2,792</b>	<b>3,187</b>	<b>2,926</b>	<b>2,984</b>
Smith School of Business					
Masters	719	828	810	829	856
Diploma	101	136	133	156	156
<b>Subtotal QSB</b>	<b>820</b>	<b>964</b>	<b>943</b>	<b>985</b>	<b>1,012</b>
<b>Subtotal Graduate</b>	<b>3,746</b>	<b>3,756</b>	<b>4,130</b>	<b>3,911</b>	<b>3,996</b>
<b>Budgeted Total Enrolment</b>	<b>21,649</b>	<b>22,019</b>	<b>22,630</b>	<b>22,908</b>	<b>23,358</b>

*This chart does not include incoming exchange students on campus, as these students do not pay tuition at Queens.*

## Details for Selected Student Subgroups

As of 2-Nov-15 Student Subgroup	Fall Headcount Actual	Fall Headcount Prelim Actual
	Fall 2014	Fall 2015
Part-Time Undergraduate	1,161	969
Undergraduate Exchange		
Away on Exchange	233	234
Here on Exchange	447	462
Net Exchange	-214	-228
Undergraduate Distance Career	32	59
Part-Time Graduate	412	455
*International Undergrad (as % of Total)	3.0	3.6
*International Graduate (as % of Total)	15.3	15.0

*\*These percentages do not include incoming international exchange students or dual-degree students (including co-tutelle PhD students or Queen's – Cornell students), who do not pay tuition at Queen's. See page 3 for more information about international enrolment.*