



**Ellis Hall 333**

1. To display the podium PC/other source screen on all of the pod screens:

- a. Select **Presentation Mode**
- b. Select **Podium PC/VGA/HDMI**



2. For each pod to work on their own screen:

- Select Collaboration Mode

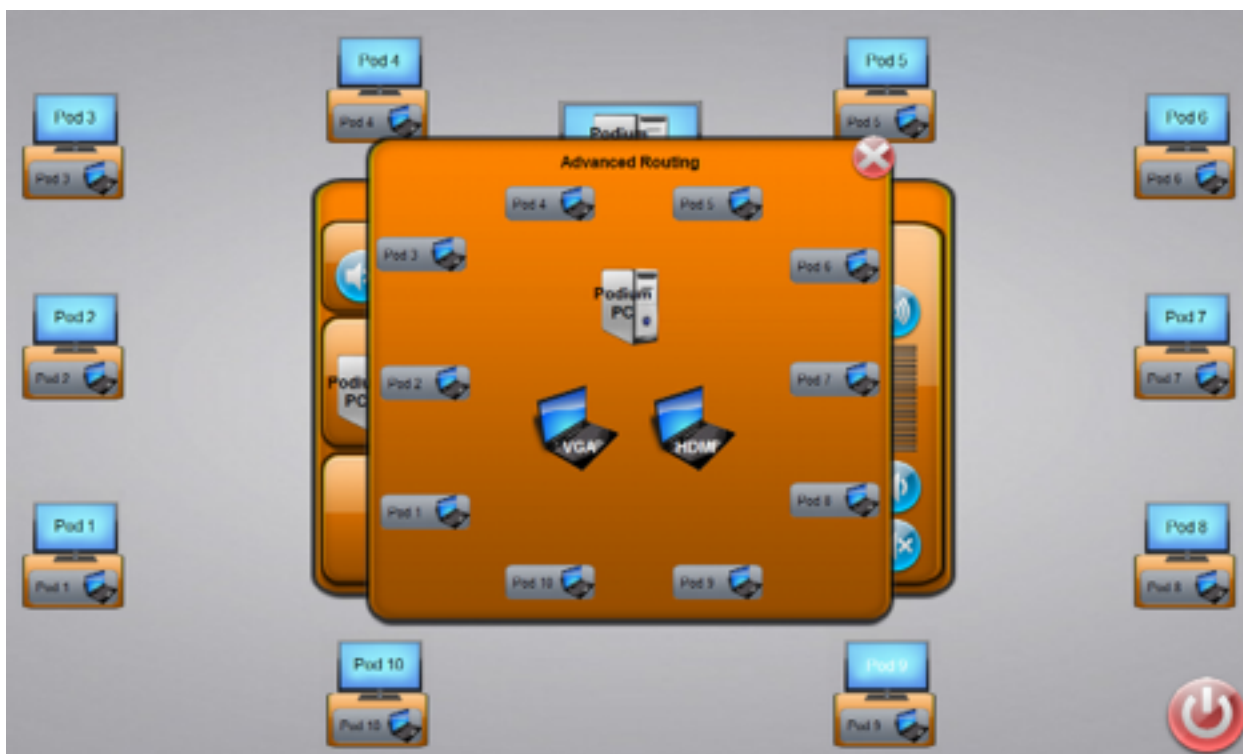


3. To display one pod's screen to all of the screens:

- a. Select **Presentation Mode**
- b. Select the pod to be displayed

4. To display the instructor's laptop screen on some of the pod screens while other pods work on their own screens:

- a. Select **Collaboration Mode**
- b. Press and hold on the pod where you want to display something different
- c. Select the source that you want this monitor to display



**5. To display one output on some of the screens**

(for example, say you want to display Pod 1, to both Pod 1 and Pod 2)

**a. Select Collaboration Mode**

**b. Press and hold on Pod 2.**

**c. A screen will pop up that allows you to select which input you want Pod 2 to display. In this case, you would select Pod 1.**

**6. To reset the system:**

**Go to Presentation Mode and go back to Collaboration Mode**