

# Romance of the **Douro River**

Lisbon | Porto | Alto Douro Wine Region



**NO SINGLE  
SUPPLEMENT**  
for Solo  
Travellers



ALUMNI EDUCATIONAL TRAVEL

**Queen's University  
Alumni Educational Travel  
June 9-20, 2018**



## Inspiring Moments

# A World Apart

The story of travel involves more than a ticket and a passport. It should weave together discovery, education and humanity, the best elements of any compelling tale. Your personal travel story begins with our commitment to delivering authentic experiences with local people.

The incomparable value of your journey lies in the personalized care you receive from your Travel Director and the knowledge you gain from expert guides and lecturers who call this area home.

By eliminating logistical worries, your multilingual Travel Director allows you to immerse yourself comfortably in your surroundings. This high-calibre professional makes you feel safe and important by creating a convivial, welcoming atmosphere.

The other important characters in this story are the guides and lecturers, whose regional expertise shines in their insider perspective and commentary.

On this journey, select excursions that suit your interests and become intimately engaged in the rhythm of the life along the Douro River, adding a memorable chapter to the rich story of your life.

- Travel through **Porto's scenic wine country**, visiting an estate cellar for a port tasting.
- Admire the colossal library at the **University of Coimbra** and discover the history of the old capital.
- Delve into Portuguese history at **Guimarães**, the city considered to be the birthplace of Portugal.
- Explore the lively city of **Porto**, spread across the banks of the Douro.
- Walk in the footsteps of the **great explorers**, who launched their epic journeys in **Lisbon**.
- Visit the beautiful, historic city of **Salamanca**.



ALUMNI EDUCATIONAL TRAVEL

## Dear Fellow Alumni and Friends,

You're invited to join us on this delightful journey to Portugal, featuring a cruise on the Douro River through wine country.

Our adventure begins with three nights in Lisbon, the city where Old World explorers launched their history-making journeys. Then we'll cruise the Douro River and glide through one of the most scenic regions of Europe. Our itinerary concludes in Porto, a lively city best known for its eponymous wine.

Together, we'll enjoy an intimate cruising experience on a small ship built specifically for river travel, and exploring the old-world ambience of Portugal.

This expertly planned itinerary showcases Portugal's history and local culture, and you can personalize your experience by joining excursions of your choice on select days.

Space is limited, so I encourage you to call today to place your reservation today!

Cha Gheill!

Melanie McEwen, Artsci'87  
Manager, Alumni Education & Travel  
Queen's University

**800-267-7837**

**[queens.ahitravel.com](https://queens.ahitravel.com)**

*Praça do Comércio, Lisbon*







Day One

In Transit

Depart your gateway city for Lisbon, Portugal.✈

Day Two

Lisbon, Portugal

Upon arrival, transfer✈ to the Sofitel Lisbon Liberdade.

Gather for a Welcome Reception.

Day Three

B

Lisbon

**Enrichment: Portuguese Explorers.** The Age of Discovery belonged to the explorers who sailed under the Portuguese flag. Learn about the 15th-

and 16th-century adventurers, who brought wealth and glory to Portugal.

**Discovery: Lisbon.** Discover the seafaring history of Portugal at the Hieronymites Monastery and Tower of Belém. The monastery was built in the late 15th century, dawn of the Age of Discovery. The monks offered spiritual support to the world explorers setting out on their great adventures. The nearby Tower of Belém commemorates Vasco da Gama’s pivotal journey as the first European navigator to sail from Europe to India. The Monument to the Discoveries honours several individuals who played integral roles in Portuguese exploration.

YOUR INDIVIDUAL EXPERIENCE

Free time means something different to every traveller. Some people like to linger in a cozy café, while others prefer to stay on the go. That’s why we have designed an itinerary to allow you to craft your individual travel experience.



**Personalize Your Cruise | PYC | Included**

Choose from a variety of excursions in selected ports based on your interests.



**ELECTIVE Experiences | At an additional cost**

Further your experience by immersing yourself in specially designed activities and extensions.

Check out our itinerary for more details. We’ve done the legwork. Now the choice is yours.



Castle of Óbidos



Manor Solar de Mateus



University of Coimbra

**Free Time:** Spend the rest of the day getting to know Lisbon on your own. For a sweeping view of the city, head to the Alfama neighbourhood.

**ELECTIVE | Fado Dinner.** Enjoy a fado performance and the flavours of Portuguese cuisine. Fado, a traditional Portuguese musical genre, features melancholy, soul-stirring guitar and vocal arrangements.

#### Day Four

B

#### Lisbon

**Enrichment: Portugal Today.** Learn about current events shaping contemporary Portugal.

**Free Time:** Enjoy a full day at leisure in Lisbon. You may enjoy Chiado, cultural heart of the city. This neighbourhood has many theatres, bookshops and cafés. This charming area has been a magnet for writers, artists and other creative types since the 19th century. An Elective Activity also is being offered today.

**ELECTIVE | Sintra, Cascais and Estoril.** Sintra's 19th-century European Romantic architecture and landscape architecture has

received UNESCO recognition for influencing the development of parks and gardens in the rest of Europe. See the picture-perfect towns of Cascais, where lunch is served, and Estoril. Take in the pretty beaches and coastline at these popular summer resorts.

#### Day Five

B | L | D

#### Óbidos | Coimbra | Porto

Explore the towns of Óbidos and Coimbra en route to Porto, where you will board the ship.

**Discovery: Óbidos.** Visit Óbidos, where the city's architecture seamlessly blends styles from the Middle Ages onwards. It is known as one of the most beautiful towns in the country.

Continue to Coimbra.

**Discovery: Coimbra.** Built atop an ancient Roman city, Coimbra was Portugal's mediaeval capital, and in 1290, the doors to its prestigious university opened. Visit the University of Coimbra and its baroque library. Built in the early 1700s, it is visually stunning with its gilded flourishes and ornate decorations.





Dom Luís I Bridge, Porto

In Porto, embark the MS Gil Eanes.


Tonight, kick off your cruise with a special Welcome Reception and Dinner.

## Day Six

B | L | D

### Porto

**Enrichment: Douro Wine Country.** Discover the winemaking traditions of the Douro region.

 **PYC | Choose one of these excursions:**

•**Cultural Porto and Port Wine Tasting.**

Explore the vibrant city of Porto. Visit the Palacio da Bolsa, the historic Stock Exchange, and the Igreja da São Francisco, the Church of St. Francis. Enjoy a wine tasting.

•**Porto by Tram and Flavours of Porto.**

Trams are a popular way to get around Porto. Hop aboard one today and explore the city all the way to the mouth of the Douro River. Visit the Museu do Carro Elétrico, followed by a tasting of local specialties.

Enjoy lunch aboard the ship.

Cruise through the Douro Valley.

## Day Seven

B | L | D

### Regua | Vila Real | Vega de Terrón, Spain

Disembark this morning in Regua.

**Discovery: Vila Real.** Travel through the vineyard-covered countryside to the charming town of Vila Real. Sample Cristas de Galo, the famous local pastry. Visit the Solar de Mateus,

an 18th-century baroque palace. Stroll through the opulent halls and the manicured gardens.


Re-embark the ship in Pinhão. Take in the scenic countryside during an afternoon of cruising through the Douro Valley.

Cross the border into Spain and continue to Vega de Terrón.

## Day Eight

B | L | D

### Vega de Terrón | Salamanca | Barca d'Alva, Portugal

 **PYC | Choose one of these excursions:**

•**Salamanca City Tour.** Explore the historic university town of Salamanca. Visit the ornate cathedral and tour the famous university. Enjoy lunch and free time in Salamanca.

•**Salamanca by Bike.** Take a guided bicycle tour through Salamanca. Ride along the Río Tormes and the Old Town. Visit the cathedral and the university. Enjoy lunch and free time.

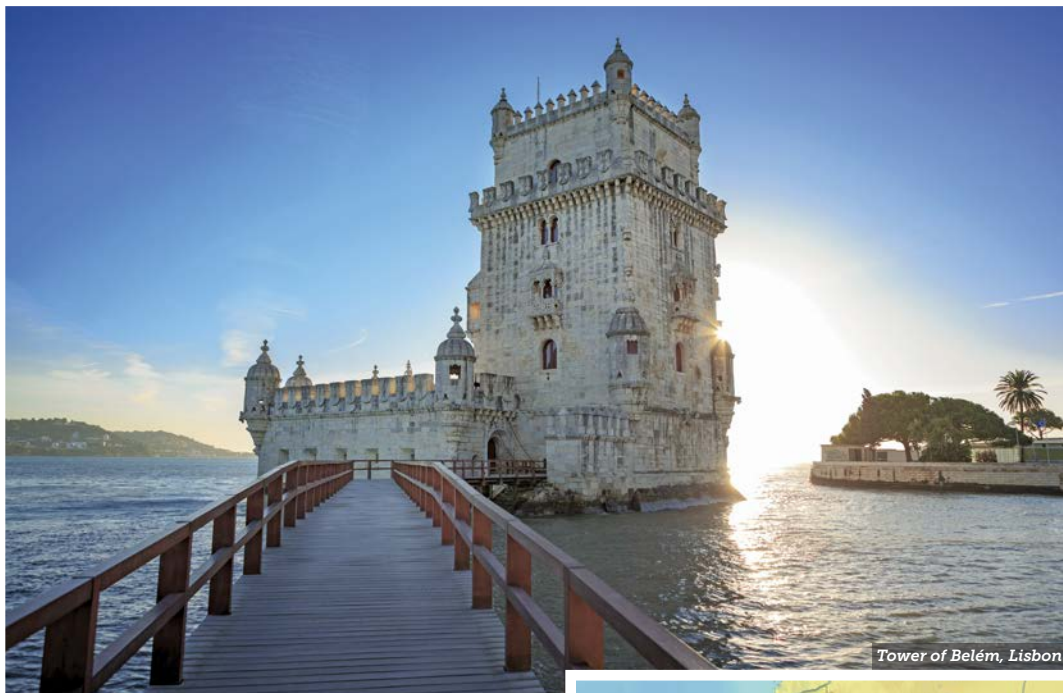
Once back aboard the ship, depart for Barco d'Alva, Portugal.

## Day Nine

B | L | D

### Ferradosa | São Salvador do Mundo | São João da Pesqueira | Leverinho

**Discovery: Porto's Wine Road.** Drive through the scenic Alto Douro wine region. Visit the towns of São Salvador do Mundo and São João da Pesqueira. Stop at a quinta, a winery, for a port wine tasting.



Tower of Belém, Lisbon

Re-embark the ship in Folgosa.

Take in the scenery as you cruise to Leverinho.


Enjoy a Farewell Reception and Dinner.

## Day Ten

B | L

### Porto

Disembark the ship in Porto this morning.

 **PYC | Choose one of these excursions:**

• **Guimarães, Cradle of Portugal.** Discover Guimarães, the birthplace of Portugal's first king and the nation, on a walking tour through this charming town. Step inside Igreja de Nossa Senhora da Oliveira. Visit the Palace of the Dukes of Bragança, an opulent estate in the city. Enjoy some time at leisure in Guimarães.

• **Douro Hike and Port Wine Tasting.** Take a guided hike along the Atlantic coastline and the Douro. Pass through São Pedro da Afurada, a typical fishing village, where you can see daily life in motion. Along the way, enjoy a beautiful view of Porto and Ribeira Square. Continue to the renowned Port wine cellars of Vila Nova de Gaia. Enjoy a tasting at one of the cellars.

Check in to the Hotel Infante Sagres.

## Day Eleven

B

### Porto

**Free Time:** The day is yours to explore on your own. You may wish to visit the Ribeira district to



see more of the port cellars. Take a stroll down Avenida dos Aliados, the preferred spot for locals to meet friends at one of the many cafés, shops and galleries.

Tonight, gather for a Farewell Reception to celebrate your Douro River adventure!

## Day Twelve

B

### In Transit

Following breakfast, transfer✈ to the airport for the return flight to your gateway city.

**Note:** *Itinerary may change due to local conditions. Walking is required on many excursions, and surfaces may be uneven or unpaved.*

✈ Transfers and flights included for AHI FlexAir participants  
B|L|D denotes included breakfasts, lunches and dinners.

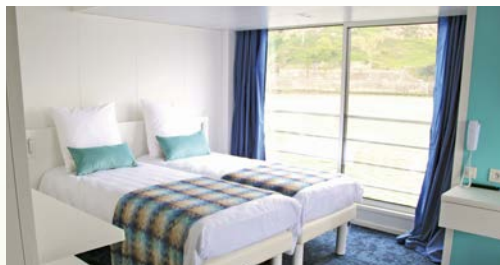




## MS Gil Eanes

MS Gil Eanes is a recent addition to CroisiEurope's fleet of fine river ships and represents a new generation of European river cruisers. Built specifically for river cruising, the Gil Eanes is small enough to dock at the doorstep of towns and cities along the Douro River. With just 66 staterooms and suites, the ship also offers an intimate cruising experience and the utmost in service, safety and convenience. Travellers can relax on the sun deck and enjoy the passing scenery, or relax in the lounge or library. Expert chefs prepare meals in the exacting tradition of fine gastronomy. There's a full breakfast buffet each morning, and at lunch and dinner, enjoy expertly prepared meals complemented by local wine.

Throughout the cruise, all beverages (except Champagne and a select list of wines) are complimentary. All cabins are welcoming and provide outside river views and feature individual climate controls, flat-screen satellite TV and bathrooms with showers. Wi-Fi is complimentary.



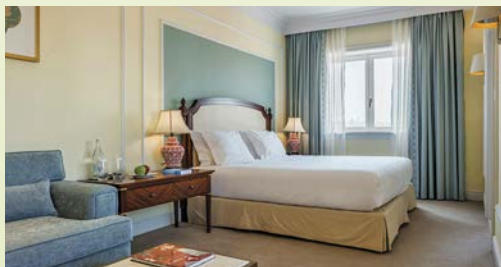
## ACCOMMODATIONS

Our travel experts have carefully selected these first-class properties for their prime locations. They are ideally located for exploring the region's renowned landmarks, while providing opportunities to immerse yourself in local life. Of utmost importance is the quality of the services, amenities and accommodations, allowing you to fully enjoy your stay.

**SOFITEL LISBON LIBERDADE** | LISBON



**HOTEL INFANTE SAGRES** | PORTO





## Reserve your Douro River cruise today!

Trip #: 1-23973W

Please contact Melanie McEwen, Manager (Queen's Alumni Educational Travel) with questions about this tour or to place your reservation:

Toll Free: 1-800-267-7837  
Fax: 613-533-6777

Direct: 613-533-6000 ext 75341  
Email: travel@queensu.ca

Please contact AHI Travel at **800-323-7373** with questions regarding this trip or to make a reservation.

Full Legal Name (exactly as it appears on passport)

1) \_\_\_\_\_  
Title First Middle Last Date of Birth

Email: \_\_\_\_\_

2) \_\_\_\_\_  
Title First Middle Last Date of Birth

Email: \_\_\_\_\_

Street Address: \_\_\_\_\_

City: \_\_\_\_\_

Province: \_\_\_\_\_ Postal Code: \_\_\_\_\_

Home: (\_\_\_\_\_) Cell: (\_\_\_\_\_) \_\_\_\_\_

Sharing with \_\_\_\_\_ (Form sent separately)

**I/we authorize you to make my/our reservations as follows:**

☐ Cabin Category Desired: 1st choice \_\_\_\_\_ 2nd choice \_\_\_\_\_

**Land | Cruise Program and AHI FlexAir**

☐ I/we reserve the Land | Cruise Program and request the AHI FlexAir to Lisbon, Portugal, with a return from Porto to depart from: \_\_\_\_\_

Departure City

☐ Please contact me regarding air options.

☐ Please send me information on upgrading my flights.

**Land | Cruise Program**

☐ I/we will make my/our own air arrangements and transfers.

**Single Accommodations**

☐ I prefer single accommodations (supplement waived, limited availability).

Reservations are subject to availability and processed on a first-come, first-served basis. Reservations to be paid in full by **March 26, 2018** (75 days prior to departure). Reservations received after this date must be accompanied by payment in full. Final payment may be made by personal cheque, MasterCard, Visa, Discover or Amex. Make cheques payable to AHI Travel.

Neither Queen's University nor Queen's University Alumni Association will be responsible for the financing, the arranging or the conducting of these tours. They assume no liability or responsibility for damages or financial loss to person or property of any description, that might occur in connection with these tours howsoever arising from the negligence, omission or otherwise of travel services arranged through AHI Travel. AHI has assumed all costs for the printing and distribution of this promotion. This program has been exclusively arranged by AHI Travel, 8550 W. Bryn Mawr Ave., Suite 600, Chicago, IL 60631 U.S.A. For further information, please call AHI Travel at **1-800-323-7373**. The personal information collected on this form is collected under the legal authority of the Royal Charter of 1841, as amended, and will be used for your reservation for the above-mentioned alumni travel program and for related correspondence; to keep you up to date on campus happenings; for fundraising purposes and university advancement activities; and to facilitate answering any University-related questions you may have. For additional clarification, please contact a representative of Queen's Alumni Travel program at 613-533-2060 or toll-free at 1-800-267-7837.

Enclosed is a deposit of \_\_\_\_\_ (\$600 pp required) to reserve \_\_\_\_\_ place(s).

☐ Accept my cheque made payable to AHI International.

☐ Charge my: ☐ MasterCard ☐ Visa ☐ Discover ☐ Amex Expires \_\_\_\_\_/\_\_\_\_\_/\_\_\_\_\_

Card # \_\_\_\_\_

(Signature as it appears on credit card)

Please note: Any payment to AHI Travel constitutes your acceptance of the terms and conditions set out herein, including but not limited to the cancellation terms.

**NOT INCLUDED:** Fees for passports and, if applicable, visas, entry/departure fees; personal gratuities; laundry and dry cleaning; excursions, wines, liquors, mineral waters and meals not mentioned in this brochure under included features; travel insurance; all items of a strictly personal nature.

**MOBILITY AND FITNESS TO TRAVEL:** The right is retained to decline to accept or to retain any person as a member of this trip who, in the opinion of AHI Travel is unfit for travel or whose physical or mental condition may constitute a danger to themselves or to others on the trip, subject only to the requirement that the portion of the total amount paid which corresponds to the unused services and accommodations be refunded. Passengers requiring special assistance, including without limitation those who permanently or periodically use a wheelchair, must be accompanied by someone who is fit and able to assist them, and who will be totally responsible for providing all required assistance.

**AIR TRANSPORTATION:** The price of air transportation offered by AHI Travel is based on Advance Purchase Excursion fares. After tickets are issued, penalties up to 100% of the ticket price may be levied. If connecting flights are requested, special promotional fares may be used, in which case penalties of as much as 100% may be assessed by the airlines if reservations are changed or cancelled after ticketing. After departure, if the reservations are changed, you will be charged the higher, all year Economy class fare. **VARIATIONS TO THE GROUP ITINERARY MUST BE REQUESTED NO LATER THAN 60 DAYS PRIOR TO DEPARTURE.** Passengers who choose to make their own airline reservations independently will be wholly responsible for arrival and departure transfers, and any airline fees or penalties incurred as a result of program cancellation and/or change in travel dates, or airline schedule(s).

**BAGGAGE:** Baggage restrictions vary according to the airline policy and the class of service flown. Details will be provided with your pre-departure information. Baggage allowances are subject to change by the carrier without notice. Excess baggage charges for additional or oversized/overweight pieces are expensive and not included in your trip price; plan your wardrobe accordingly. Transport of baggage and personal effects is at the owner's risk throughout the travel program.

**AUTHORITY TO USE IMAGES AND AUDIO RECORDINGS:** On occasion, AHI Travel obtains, from its staff, or from trip participants, photographic or video images of passengers and trip activities. By participating in this travel program, you authorize AHI Travel, without providing compensation to you, or obtaining additional approvals from you, to include photographic and video recordings of you, as well as voice recordings included with any videos, in AHI Travel's sales, marketing, advertising, publicity and/or training activities.

**RESPONSIBILITY:** AHI Travel and the Sponsoring Association do not own or operate any entity which provides goods or services for this program, and act only as agents for the independent suppliers of travel conveyance, transport, accommodations or other services. All such persons or entities are independent contractors. As a result, AHI Travel and the Sponsoring Association are not liable for any negligence or willful act of any such person or entity or any third person. In addition and without limitation, AHI Travel and the Sponsoring Association are not responsible for any delays, delayed departure or arrival, missed carrier connections, loss, death, damage or injury to person or property or accident, mechanical defect, failure or negligence of any nature howsoever caused in connection with any accommodations, transportation or other services or for any substitution of hotels or of common carrier equipment, with or without notice, or for any additional expenses occasioned thereby. Dates, Program Details and Tour costs, although given in good faith and based on tariffs, exchange rates and other information current at the time of printing, are subject to change at or before the time of departure. No revisions of the printed itinerary or its included features are anticipated; however, the right is reserved to make any changes, with or without notice, that might become necessary, with the mutual understanding that any additional expenses will be paid by the individual passenger. Baggage and personal effects are the sole responsibility of the owners at all times. If the entire program is cancelled for any reason, participants shall have no claim other than for a full refund. By forwarding the deposit, the passenger certifies that he/she has no physical, mental or other condition of disability that would create a hazard for himself/herself or other passengers and accepts the terms of this contract set out herein and in more specific pre-departure passenger information. The airlines and other transportation companies concerned are not to be held responsible for any act, omission, or event, during the time passengers are not on board their conveyances. The passage contract in use, when issued, shall constitute the sole contract between the company(ies) and the passenger and/or purchaser of this trip. **CANCELLATION:** All cancellations for any reason will be subject to a \$250 per person administrative fee. You may choose, at the time of cancellation, to apply the withheld administrative fee to a future AHI Travel program that will operate in the current calendar year or year following. Cancellation from 120 days to 75 days prior to departure will result in forfeiture of 10% of the entire cost of the trip per person; 75-30 days, 50% of the trip cost per person; cancellation from 29 days up to the time of departure will result in 100% forfeiture of the entire cost of the trip. **TRIP CANCELLATION INSURANCE IS AVAILABLE. AN APPLICATION WILL BE SENT AFTER YOU RESERVE.** All cancellations must be submitted in writing to AHI Travel. **CANCELLATION OF TRIP OPTIONS:** Purchases of optional excursions, trip extensions and additional hotel nights become fully non-refundable 45 days prior to departure. Air transportation and private transfer purchases are subject only to penalties assessed by the airlines and transfer suppliers.

All prices listed are in USD. Special offers, promotions and discounts cannot be combined. CST Registration No. 2028271-20. Fla. Seller of Travel Reg. No. ST-33300 Iowa Seller of Travel No. 520 Ohio Seller of Travel Reg. No. 8889139. Washington State Seller of Travel Reg. No. 601-820-781. PARTICIPATING AIRLINES: all IATA and ARC Member Carriers ©2017 AHI Travel Printed in the USA.

## PROGRAM DATES

**Air Program dates:** June 9-20, 2018

**Land | Cruise Program dates:** June 10-20, 2018

## LAND | CRUISE PROGRAM

Category-Deck	Full Price	Exclusive Offer for Canadian Travellers	Special Price*
E-Lower Deck	\$3,645	\$500	<b>\$3,145</b>
D-Middle Deck (Aft)	\$4,145	\$500	<b>\$3,645</b>
C-Middle Deck (Aft)	\$4,345	\$500	<b>\$3,845</b>
B-Upper Deck (Aft)	\$4,745	\$500	<b>\$4,245</b>
A-Upper Deck (Forward)	\$4,945	\$500	<b>\$4,445</b>
S2-Middle Deck (Aft)	\$5,145	\$500	<b>\$4,645</b>
S1-Upper Deck (Aft)	\$5,345	\$500	<b>\$4,845</b>

All cabins offer river views and have bathroom with shower, flat-screen TV, hair dryer, safe and closet.

S1 features a private terrace and French balcony, S2 and A-D have a French balcony and E has a picture window.

\*Special Price valid if booked by the date found on the address panel.

VAT, Port Tax and Service is an additional \$395 per person.

All prices quoted are per person, based on double occupancy (unless otherwise stated).

**Single supplement waived for solo travellers!** This offer is limited, capacity controlled and tends to sell out quickly.

## Let us arrange your flights!

✈ **AHI FlexAir** | Our experts are ready to assist you in booking flights. Our personalized air program offers the following advantages:

- **price guarantee** to protect you from fuel surcharge increases after ticket purchase
- arrival and departure **transfers** on most flights
- **flexibility** to change or cancel your reservations without penalty up to 60 days before departure on most flights
- **assistance** in the event of schedule changes or delays
- flight insurance worth up to USD 250,000, subject to policy terms

## Travel stress-free with AHI FlexAir.

### UNESCO World Heritage

1. Historic Centre of Oporto and the Dom Luis I Bridge
2. Historic Centre of Guimarães
3. Alto Douro Wine Region
4. University of Coimbra
5. Monastery of the Hieronymites and Tower of Belém
6. Old City of Salamanca



**800-267-7837**

**queens.ahitravel.com**



# INCLUDED FEATURES

## ACCOMMODATIONS

(With baggage handling.)

- Three nights in Lisbon, Portugal, at the first-class Sofitel Lisbon Liberdade.
- Five nights aboard the exclusively chartered, first-class MS Gil Eanes.
- Two nights in Porto at the first-class Hotel Infante Sagres.

## TRANSFERS

- All deluxe motor coach transfers in the Land | Cruise Program and baggage handling.


## EXTENSIVE MEAL PROGRAM

- Ten breakfasts, six lunches and five dinners, including Welcome and Farewell Dinners onboard; wine and beer with lunch and dinner on the ship.

## YOUR ONE-OF-A-KIND JOURNEY

- Expert-led **Enrichment programs** enhance your insight into the region.
- **Discovery excursions** highlight the local culture, heritage and history:
  - Delve into the history and culture of Lisbon, Portugal's vibrant capital city.

- Explore the town of Óbidos, a showcase of varied architectural styles.
- Marvel at the gilded library at the University of Coimbra.
- Visit Solar de Mateus, an 18th-century baroque palace in Vila Real.
- Travel along Porto's Wine Road and enjoy a port wine tasting.
- Free time to pursue your own interests.
- Welcome and Farewell Receptions to mingle with fellow travellers.
- Clearly hear your English-speaking guide with your own VOX headset.
- Tipping of guides and drivers.
- Complimentary travel mementos.

 **Choose from a selection of PYC | Personalize Your Cruise excursions in these towns:**

- Porto (Day 6)** | Cultural Porto & Port Wine Tasting | Porto by Tram & Flavours of Porto
- Vega de Terrón** | Salamanca City Tour | Salamanca by Bike
- Porto (Day 10)** | Guimarães, Cradle of Portugal | Douro Hike & Port Wine Tasting

## AHI TRAVEL EXPERTISE

From your reservation to your return home, we are here to ensure you have the adventure of a lifetime.

### *Before you go:*

- ▶ **Travel Consultants** | These experts stand ready to answer your questions about activities, meals, accommodations and more as they guide you through the reservation process.
- ▶ **Passenger Service Representative** | Once you have reserved your spot, enjoy personalized assistance from this specialist, your one point of contact who will help you with everything from arranging flights to booking elective activities to fulfilling special requests.
- ▶ **Travel Information** | Receive extensive destination information and travel tips compiled by our travel-savvy team to prepare you fully for your journey.

### *Once you arrive:*

On the ground, three layers of top-quality professionals offer their insiders' perspective. From suggesting the best café or pub to sharing a laugh over the stories of the day, our dedicated team takes your adventure to the next level.

- ▶ **Travel Director** | Throughout your journey, you will be in the care of a seasoned AHI travel professional who will manage all the logistics, allowing you to relax and simply soak up the ambience. Resourceful, knowledgeable and attentive, your Travel Director helps to ensure you enjoy an unforgettable travel experience.
- ▶ **Expert Guides** | Who better to show you around than the people who live there? We've specially selected informed and enthusiastic local professional guides who understand the needs of our educated and curious travellers. Warm and genuine, they're ready to share their passion for their country with you.
- ▶ **Lecturers** | Coming from all walks of life, our entertaining local lecturers open your eyes to history and current events. The breadth of their knowledge deepens your appreciation for the region and its heritage.





ALUMNI EDUCATIONAL TRAVEL

Alumni Educational Travel  
Alumni Relations & Annual Giving  
55 Stuart St  
Room 101B, Summerhill Bldg.  
Kingston, ON  
K7L 3N6

D0UR0V18 145

**800-267-7837**  
**queens.ahitravel.com**



**AHI Travel's** mission is to deliver inspirational educational and cultural travel programs that delight travellers.

**With AHI you can rely on:**

- Experienced Travel Directors who attend to every detail of your journey.
- An exceptional travel value.
- Unique access to local sites.
- Flexibility and customization.
- Safety and security.



## Explore Lisbon, Porto and Douro wine country!

**Please call or refer to our website for the most current program information, discounts and pricing.**