

I@Q POSTER REQUIREMENTS

Research posters are visual aids that are used to present scholarly work. Information is presented concisely and in a visually appealing manner to attract attention and spark discussion.

Please ensure your poster meets all of the criteria outlined in this document before submitting the final poster file.



CREATING YOUR POSTER

DESIGN

- Portrait orientation
- Not overly text-heavy
- Include some visuals
- Around 24-36pt font size
Use sans serif fonts
Avoid CAPSLOCK

DIMENSIONS

- Set the dimensions of your document to 3x4 ft (36x48 in) in portrait orientation. The file must be formatted to this size.
- Check the dimensions of your final PDF file by CTRL + D and checking page size.

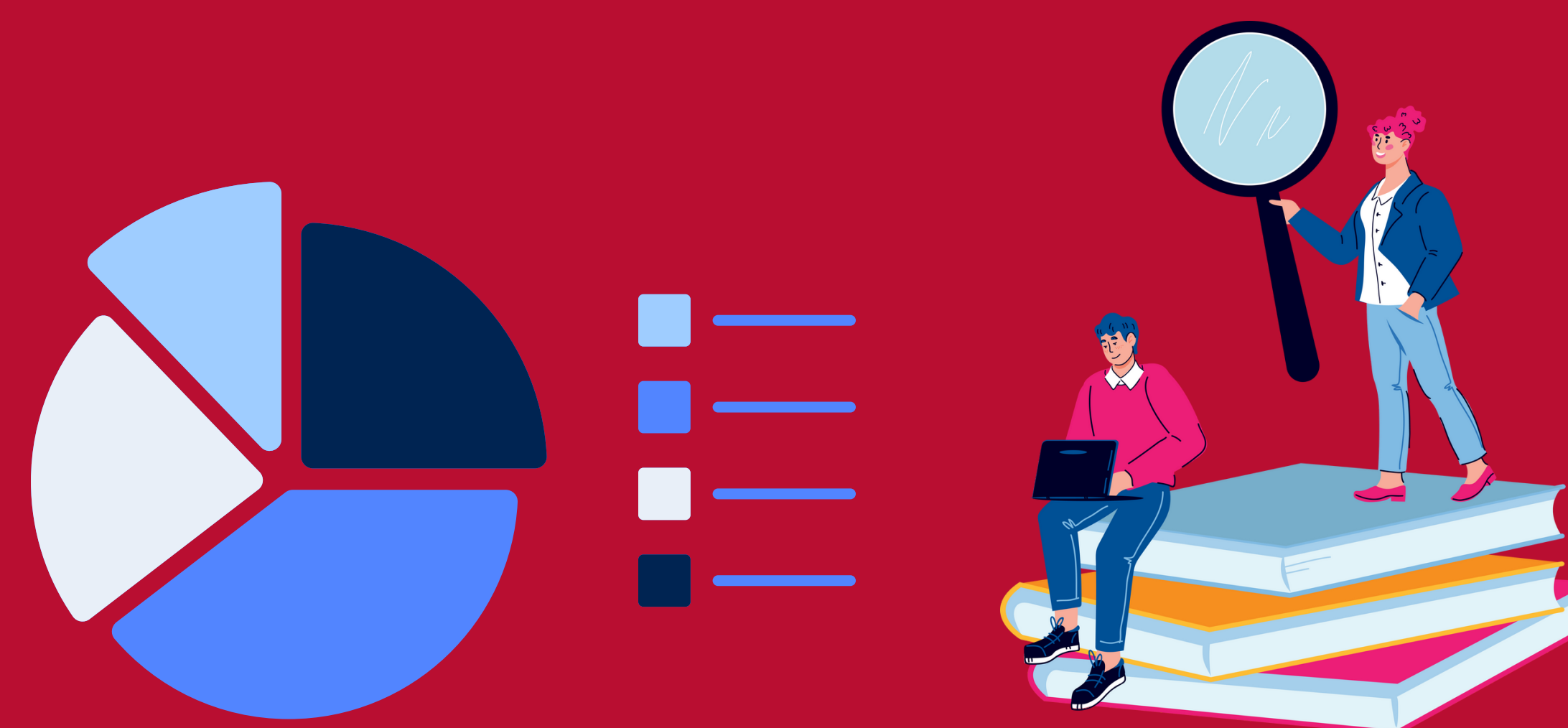
DON'T FORGET

- Use high-contrast colours
- Chunk up content into sections with headings and lists
- Use high-resolution images
- View your poster at 100% to check graphics

SENDING YOUR POSTER FILE

The library will print and display your poster for you. Please email iatq@queensu.ca with the following:

- PDF file of your poster (ensure the dimensions are correct!)
- Use this naming convention for your file:
LastnameFirstname-poster-2024
 - for example: LiDanielle-poster-2024



Use graphs to visualize research or findings.

Illustrations add visual interest and emphasis.



VERY IMPORTANT NOTE

It is the student's responsibility to meet the poster requirements outlined in this document. Otherwise, the poster will not be printed and displayed as part of the I@Q Conference.

POSTER SUBMISSION DEADLINE: FEB. 28 AT MIDNIGHT

Please send any questions to iatq@queensu.ca