

Mathematics & Engineering, Mathematics & Statistics MSc, MASc Map

Applying to and Navigating Graduate Studies



GRAD MAP FOR MSc, MASc STUDENTS →

Why **GRADUATE STUDIES** in **MATHEMATICS** and **STATISTICS**?

A graduate degree in Mathematics and Statistics is essential for anyone aspiring to research or academic positions, and is very useful for those who want to assume a leadership role in government, business and industry. A Master's degree in mathematics and statistics prepares students for a wide variety of research and industry career options.

Why **QUEEN'S**?

Queen's is an ideal place to pursue graduate study in Mathematics and Statistics. We have an outstanding group of faculty researchers who are internationally recognized in their fields of specialization. They represent a wide variety of areas including pure mathematics (number theory, algebra, algebraic geometry, combinatorics, operator algebras, random matrices and dynamical systems), mathematical physics, mathematics applied to engineering (control theory, communication theory), mathematical biology, and both theoretical and applied statistics.

Program **STRUCTURE**

- MSc Pattern I (18-24 months): course work and a research thesis.
- MSc Pattern II (12 months): course work and research project.
- MASc (18-24 months): course work and a research thesis.



"The graduate mathematics community at Queen's is vibrant, international, and intellectually stimulating."

—John Treilhard, MSc

RESEARCH Areas

MSc

- Algebra and Number Theory
- Analysis, Geometry and Topology
- Applied Mathematics
- Mathematics and Engineering
- Probability and Statistics

MASc

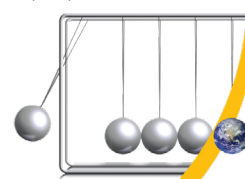
- Mathematics and Engineering

We encourage you to identify an area of research interest and contact a potential supervisor before applying.

Visit the [Department of Mathematics and Statistics website](#) to read [faculty profiles](#) and learn more about faculty members' research areas. When you find a faculty member with similar research interests to yours, contact him/her and tell them about your interest in graduate work and related experience.

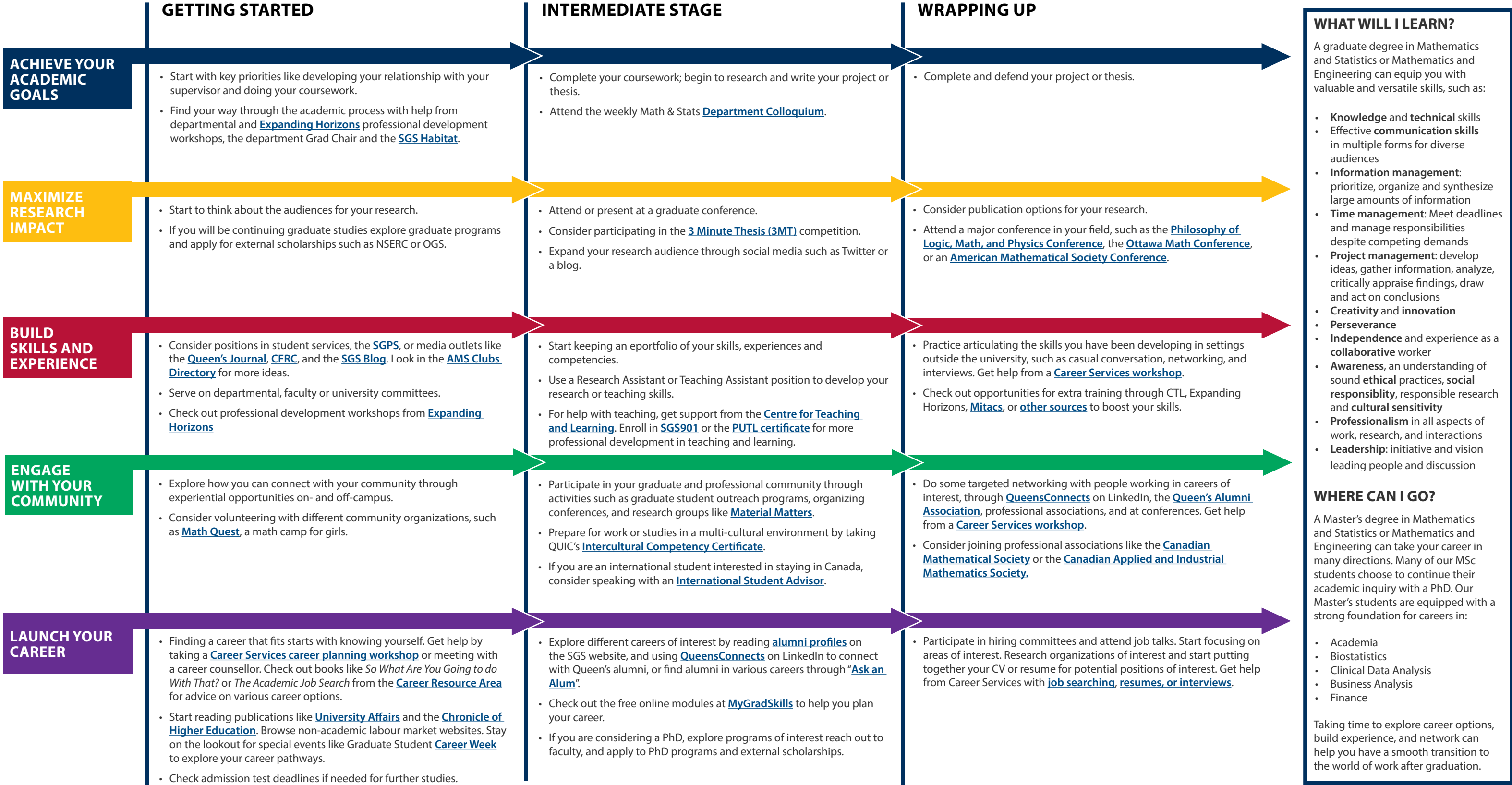


School of
Graduate
Studies
Create an impact
www.queensu.ca/sgs



Mathematics and Statistics MSc, MASc MAP *

MASTER OF SCIENCE (MSc), MASTER OF APPLIED SCIENCE (MASc)



* This map is intended to provide suggestions for activities and careers, but everyone's abilities, experiences, and constraints are different. Build your own Grad Map using our online **My Grad Map** tool.

Graduate Studies FAQs

How do I use this map?

Whether you are considering or have embarked on graduate studies at Queen's, use this map to plan for success in five overlapping areas of your career and academic life. The map helps you explore possibilities, set goals and track your individual accomplishments. Everyone's journey is different – the guide offers options for finding your way at Queen's and setting the foundation for your future. To make your own customized map, use the online [My Grad Map](#) tool.

Where can I get help?

Queen's provides you with a broad range of support services from your first point of contact with the university through to graduation. Ranging from help with academics and careers, to physical, emotional, or spiritual resources – our welcoming environment offers the programs and services you need to be successful, both academically and personally. Check out the [SGS HABITAT](#) for available resources.

What is the community like?

At Queen's, graduate students from all disciplines learn and discover in a close-knit intellectual community. You will find friends, peers and support among the graduate students enrolled in Queen's more than 130 graduate programs within 50+ departments & research centres. With the world's best scholars, prize-winning professional development opportunities, excellent funding packages and life in the affordable, historic waterfront city of Kingston, Queen's offers a wonderful environment for graduate studies. Queen's is an integral part of the Kingston community, with the campus nestled in the core of the city, only a 10-minute walk to downtown with its shopping, dining and waterfront. For more about Kingston's history and culture, see Queen's University's [Discover Kingston](#) page.

Application FAQs

What do I need to know to **APPLY**?

ACADEMIC REQUIREMENTS

- **MSc:** 4 year Bachelor's degree (preferably honours) with a minimum B+ standing.
- **MASc:** 4 year Bachelor's degree (normally in engineering) with a minimum B+ standing.

ADDITIONAL REQUIREMENTS

- Two official transcripts for all post-secondary studies.
- At least 2 letters of reference.
- Curriculum vitae.
- If English is not a native language, prospective students must meet the [English language proficiency requirements](#) in writing, speaking, reading, and listening. The School of Graduate Studies requires the following minimum scores: TOEFL (paper-based): 550, (2) TOEFL iBT: Writing (24/30); Speaking (22/30); Reading (22/30); Listening (20/30), for a total of 88/120 (applicants must have the minimum score in each test as well as the minimum overall score), or (3) IELTS: 7.0 (academic module overall band score), or (4) PTE Academics: 65.

KEY DATES & DEADLINES

- **Application due:** January 15 to receive full funding consideration. There is no deadline to apply for admission.
- **Notification of acceptance:** Rolling acceptances.

Before you start your application, please review the [graduate studies application process](#).

What about **FUNDING**?

Most MSc and MASc students in Mathematics and Statistics receive minimum funding of \$23,000 per year. The funding package can consist of teaching assistantships or fellowships, research fellowships, internal and external awards and/or scholarships.

We encourage all eligible student to apply for external funding from OGS, NSERC and other sources. Queen's will automatically issue a \$5,000 top-up to incoming master's students who are awarded federal government tri-council awards. For more information, see the School of Graduate Studies' information on [awards and scholarships](#).



DEPARTMENT OF
**MATHEMATICS
AND STATISTICS**

Jennifer Read, Graduate Assistant
(613) 533-2405
mathstat.gradapp@queensu.ca
queensu.ca/mathstat