



**SUSTAINABLE DEVELOPMENT GOALS  
(SDG) FRAMEWORK 2025-2030**





# Overview

The purpose of this Sustainable Development Goals (SDG) Framework for Queen's is to enable the university community to **understand the integration of the SDGs into every aspect of university life**. This framework **identifies reasonable, sustainable, and logical pathways to further embed SDGs into decision making and strategic action** at all levels of the university.

By creating and applying this framework, we hope to **harness the energy of the SDGs** toward both **short-term and longer-term aspirational and transformational outcomes** as it relates to pedagogies, research, operational practices, governance and accountability, and student, staff, and faculty experience.

This framework **explicitly connects existing priorities and actions** in institutional strategy documents (i.e., Queen's Strategy, Key Performance Indicators, Strategic Research Plan, Global Engagement Strategic Plan) **to the global agenda for sustainable development**, using the language of the SDGs, and identifies aspirational stretches within existing strategic goals for further impact on the global goals.



# Reporting and Accountability

Reporting and accountability for the SDG framework will sit with the designated members of the Queen's Senior Leadership Team, Vice-Principals, and Vice-Provosts, with each senior leader expected to integrate reporting on and creating new commitments to actions to advance the framework in their annual goal-planning with the Principal.

The **SDG Advisory Council** has been re-structured into an Implementation Council to oversee the operationalization and implementation of the goals established in the framework. This council includes relevant members of the Senior Leadership Team and department/unit heads to support the implementation of the framework across the university.

The Principal will report on an annual basis to the Board of Trustees on progress towards the goals established in the SDG framework.



# Alignment with Institutional Strategy

The framework establishes short- and long-term priority actions to **advance Queen’s engagement with and action towards the SDGs**, organized in alignment with the **six strategic goals of the institution** as well as one additional pillar focused on operational priorities.



# RESEARCH IMPACT

Align SDGs with research vision

Incentivize SDG-driven research

## **GOAL** Align the SDGs with our institutional vision for research

Lead: Vice-Principal, Research

### **Queen's Strategic Research Plan (2024-2029)**

- Embed the SDGs in the new **Strategic Research Plan (SRP)**, the university's guiding research strategy
- Identify the SDGs that align with areas of research strength, priority, and emerging areas of focus
- Clearly articulate how advancing the SDGs is interconnected with our research mission

### **Scopus and SciVal analysis and mapping**

- Leverage bibliometric and analytical tools to understand how our research community is currently engaging with the SDGs
- Use existing SDG keyword queries to: identify which SDGs we contribute to via publications, assess their Field-Weighted Citation Impact (FWCI), categorize who we are partnering with nationally and globally, and where gaps and opportunities exist
- Utilize data to inform research and global engagement strategies – building on strengths and maximizing potential impact

### **Horizon Europe: Pillar II**

- Prepare our community to engage in this funding opportunity
- Actively support researchers in participating in applications



## **GOAL Create research environments that incentivize SDG impact**

Lead: Vice-Principal, Research and Vice-Principal, Advancement

### **Principal's Research Impact Awards**

- Create a high-profile, bespoke internal awards program that recognizes interdisciplinary research projects focused on global challenges
- Award SDG-related research impact at the faculty, graduate, and undergraduate levels
- Three named awards created: one for graduate students and postdoctoral fellows, one for early career researchers, one for established researchers

### **Build coalitions for mission-driven research**

- Cluster interdisciplinary experts working across areas of global challenges
- Provide coordinated institutional support (i.e., VPR Strategic Initiatives unit, Queen's Partnerships and Innovation, University Relations, Global Engagement) to secure major funding, build connections with government and industry, and international partners



# STUDENT LEARNING

Connect learning to SDGs



**GOAL Create opportunities for students to understand how their learning intersects with and is informed by global priorities for sustainable development**

Lead: Vice-Provost, Teaching and Learning

**Equip students with the knowledge, skills, and values to address global challenges aligned with the SDGs**

- Develop a process which allows units (departments in departmentalized units, schools, and faculties, or otherwise) to identify courses that meet specific criteria (“tag”) for SDGs
- Launch a comprehensive undergraduate certificate focused on the Sustainable Development Goals
  - Will feature coursework and first-hand engagement in sustainability projects, using community-engaged pedagogy
  - Co-leadership with associate dean (or equivalent) in the faculty or school offering the certificate

**Engage in partnerships to regularly assess and strengthen institutional approaches to Education for Sustainable Development**

- Participate in semi-annual student-led audit of Education for Sustainable Development, in partnership with **Responsible Futures**
- Act on audit findings to improve score each time the university is evaluated



# RESEARCH AND TEACHING INTEGRATION

Identify and articulate SDG-related skills  
through research experiences



**GOAL** Identify mechanisms for students to recognize and articulate the skills fostered through their curriculum, co-curricular, and/or research experiences as they relate to the SDGs

Lead: Vice-Provost, Teaching and Learning  
and Vice-Principal, Research

### Embed reflection on SDG linkage to experiential learning for undergraduate and graduate students

- Using the existing Experiential Learning Wraparound processes, the Experiential Learning Hub will insert an SDG reflection section (in forms and training)

### Undergraduate research

- Enable students to identify and reflect on SDGs, using the existing USSRF (Undergraduate Summer Student Research Fellowship) and USRA (Undergraduate Student Research Awards) application forms and knowledge dissemination platforms (abstract publication)
- Add SDG-focused sessions to the Q-SURGE (Queen's Summer Undergraduate Research Growth Experience) program and other professional development opportunities

### Graduate research

- Include an optional page in School of Graduate Studies and Postdoctoral Affairs (SGSPA) thesis and dissertation format guidelines, inviting students to reflect on the ways that their research is motivated by, and makes contributions to, different SDGs
- Host an annual SDG Graduate Research Day



# GLOBAL ENGAGEMENT

Build global SDG partnerships and  
programs grounded in I-EDIAA



**GOAL** Implement SDG-focused global partnerships and student programming informed by considerations of Indigenization – Equity, Diversity, Inclusion, Anti-Racism, and Accessibility (I-EDIAA)

Lead: Vice-Provost, Global Engagement

## Students

- Increase the percentage of students who complete an international and SDG-focused experience while at Queen's
- Increase financial aid and other access programs and policies to reduce barriers to participation in SDG-focused global activities, especially for equity-deserving students
- Showcase international graduate students with explicit SDG-linked focus of study, internally and externally



## Partnerships

- Establish or identify model reciprocal institutional partnerships that seek to address one or more SDG with at least one country, community, or university in each priority region
- Create new and deepen existing Queen's partnerships with equity-deserving communities to advance specific SDG indicators in and outside priority regions by 2028



## Knowledge production and mobilization

- Measure current SDG publications using SciVal (see research goal)
- Based on SciVal findings, set goal to increase the percentage of publications with international co-authorship that use SDG bibliometric keywords
- Launch an annual "Principal's Global Seminar Series" to invigorate campus-wide conversations and learning related to SDGs



# QUEEN'S IN THE COMMUNITY

Embed SDGs in community engagement

Enhance measurable community impact



## **GOAL Formalize an SDG component into Queen's community engagement activities for sustained initiatives**

**Lead: Principal's Special Advisor on Community Engagement**

- Identify SDGs being addressed in Queen's endorsed community projects and partnerships
- Identify the SDG orientation of partners and collaborators



## **GOAL Enhanced community impact**

**Lead: Principal's Special Advisor on Community Engagement**

### **Expand SDG-related community-engaged programs**

- Assess existing co-curricular programs (i.e., Queen's Career Gateway, PhD-Community Initiative)
- Identify opportunities for enhancing SDG alignment in existing programs

### **Track student community engagement activities that are SDG-relevant**

- Expand SDG-related community-engaged initiatives

### **Integrate explicit SDG content and focus into Queen's Public Scholarship Program**

- Equip future public scholars with SDG knowledge and capacity to link SDGs to their own community-engaged scholarship

### **Identify and expand partnerships with equity-deserving communities that address SDG 10 – Reduced Inequalities**

- Integrate equity considerations in the design of the Community Engagement Partner Database, proposed/prepared by the Special Advisor to the Principal on Community Engagement
- Establish a baseline
- Expand partnerships with equity-deserving communities

# ORGANIZATIONAL CULTURE

Embed SDGs campus-wide

## **GOAL Develop a campus-wide SDG movement**

**Lead: Vice-Principal, University Relations and  
Vice-Principal, Finance and Administration**

### **Recognize and reward SDG-focused actions of our community**

- Establish an internal awards program that recognizes excellence in advancing SDGs at Queen's
- Establish an annual internal conference/workshop that brings together Queen's community members working on SDGs to share best practices and advance discussion and actions

### **SDG training and education**

- Develop training related to SDGs that would be available to all faculty and staff
- Integrate SDG information into Employee Onboarding Project (VP CEI, Community Integration Liaison)
- All QPMG employees include an SDG-related objective in their PDP/annual planning

### **Integrate SDG projects and initiatives into university communications**

- Consistent with ongoing efforts to promote SDG-related research, the university will highlight and promote projects and initiatives that advance the SDGs

### **Integrate SDGs into existing business templates and reports**

- Identify relevant SLT and faculty business submission templates and modify existing sustainability sections to be SDG-focused or add a section for those lacking

### **Maintain external recognition of Queen's efforts for impact in SDGs**

- The university continues to rank in the Top 5 in Canada in the **Times Higher Education Impact Rankings**





# OPERATIONS

Reduce energy use and  
phase out fossil fuels

Advance responsible consumption  
and production

Promote sustainable commuting  
and active transportation

**GOAL** Reduce campus energy use, and transition away from fossil fuel energy sources in line with Queen's Climate Action Plan

---

Lead: Vice-Principal, Finance and Administration

- Transition to cleaner electricity-based systems
- Reduce building level energy consumption across campus

**GOAL** Promote more responsible consumption and production across Queen's operations

---

Lead: Vice-Principal, Finance and Administration

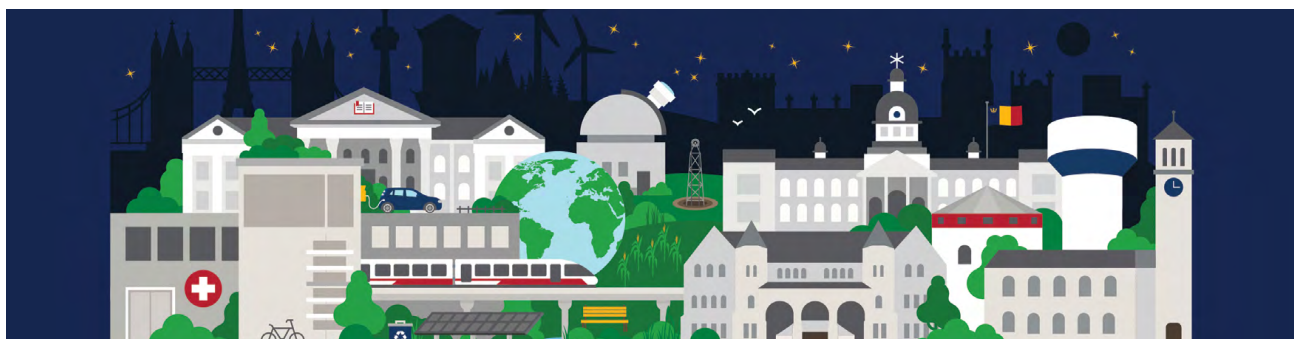
- Establish circular procurement best practices and supplier localization strategies
- Work towards 50% waste diversion rate by 2030

**GOAL** Promote sustainable commuting and active transportation at Queen's

---

Lead: Vice-Principal, Finance and Administration

- Increase the share of staff, faculty, and students commuting via active or low-carbon modes
- Transition parking capacity towards higher value development sites while expanding safe and accessible active transportation infrastructure across campus





Queen's  
UNIVERSITY

OFFICE OF THE PRINCIPAL  
AND VICE-CHANCELLOR

[queensu.ca/principal/sdgs](https://queensu.ca/principal/sdgs)