

# Cyclical Program Review

Support Services  
Orientation  
June 2017



# Own the process

- Look back to FAR and IP from past review
- Use this opportunity for strategic planning for your unit
- Where do you want to be in eight years?

What's your story?



# Self-Study

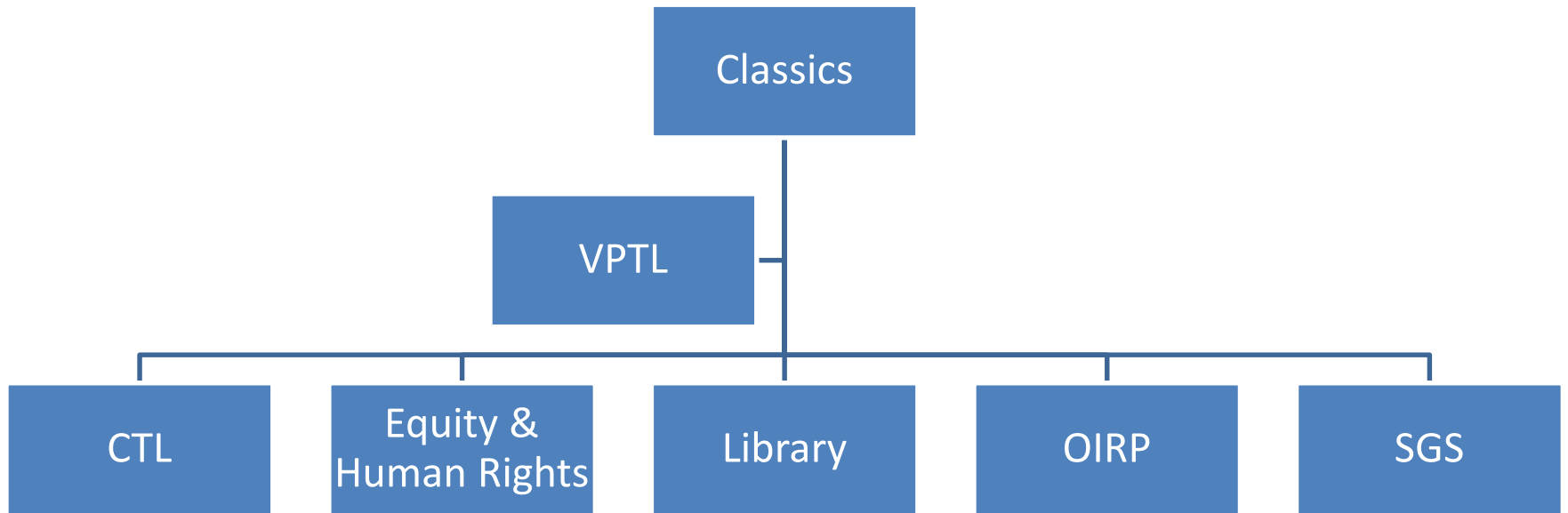
- Broad-based
- Reflective
- Critical
- Forward-looking
- Focused on student learning

**Requires involvement of faculty, staff, and students.**

A departmental retreat can help facilitate the curriculum mapping process and may be useful to review recommendations.



# Support Services



# Curriculum Review



- Review and revision of learning outcomes
  - Connection to UDLEs
- Review and revision of curriculum map
- Support by Klodiana Kolomitro (CTL)

# Equity

- DEAP tool
- Connection to PICRDI and TRC
- Articulation of achievable equity goal in 2 year timeline
- Support by Erin Clow (Equity and Human Rights)

# Library Resources



- Assess adequacy of undergraduate and graduate teaching, learning, and research materials
- Support by Michele Chittenden, coordinated by Heather McMullen (Library)

# Data

- Attempt to ground pedagogical practice in reportable metrics
- Aspiring to use **selected** metrics **thoughtfully**
  - Selected NSSE (undergraduate) data (e.g., student-faculty interaction)
  - Selected CGPSS (graduate) data (e.g., advisor feedback)
- Support from Chris Conway (OIRP), Jake Kaupp (FEAS), and SGS



# Graduate Programs



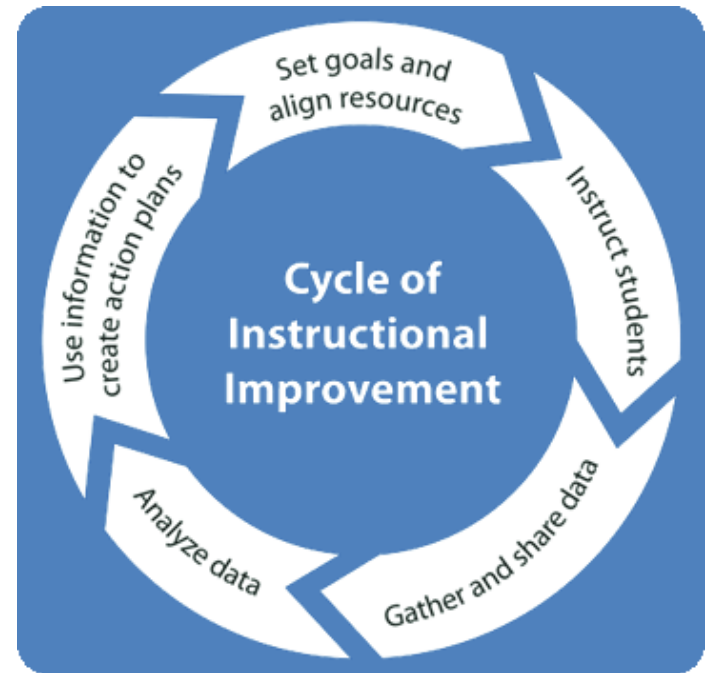
- Supply specific data and materials for graduate portions of self-study
- Support from Marta Stranznicky and Brenda Brouwer (SGS)

# CVs

- Reference [QUQAP Essential Elements for CVs](#)
- Any format, though ideally the entire unit uses the same format
- Faculty 180 may be used

# Timeline

- **Reviewer nominations:**  
due to Faculty Office  
February 1, 2018
- **Self-study document:**  
due April 30, 2018
- **Site visit:**  
September 2018 –  
March 2019



# After the Site Visit

Responses to the Review Team Report are collected from:

- Unit Head
- School of Graduate Studies
- Faculty Dean



# After the Site Visit

- Senate Cyclical Program Review Committee (SCPRC) provides a report to the Provost
- The Provost provides a **Final Assessment Report (FAR)** and **Implementation Plan (IP)**
- One year later, the Unit reports back on implementation

