

## Residence Floor Plans

# SMITH HALL



**IMPORTANT NOTE:** Consider identifying several preferences before you self-assign as some rooms may not be available when it's your turn to choose due to gender designation of the room or the room already being booked by a student with a more favourable lottery number or a student previously placed for accommodation needs.

# Residence Floor Plans

## TABLE OF CONTENTS

---

<b>Smith Hall - 1<sup>st</sup> Floor</b> .....	<b>3</b>
<b>Smith Hall - 2<sup>nd</sup> Floor</b> .....	<b>4</b>
<b>Smith Hall - 3<sup>rd</sup> Floor</b> .....	<b>5</b>
<b>Smith Hall - 4<sup>th</sup> Floor</b> .....	<b>6</b>
<b>Smith Hall - 5<sup>th</sup> Floor</b> .....	<b>7</b>

# Residence Floor Plans

## Smith Hall – 1<sup>st</sup> Floor

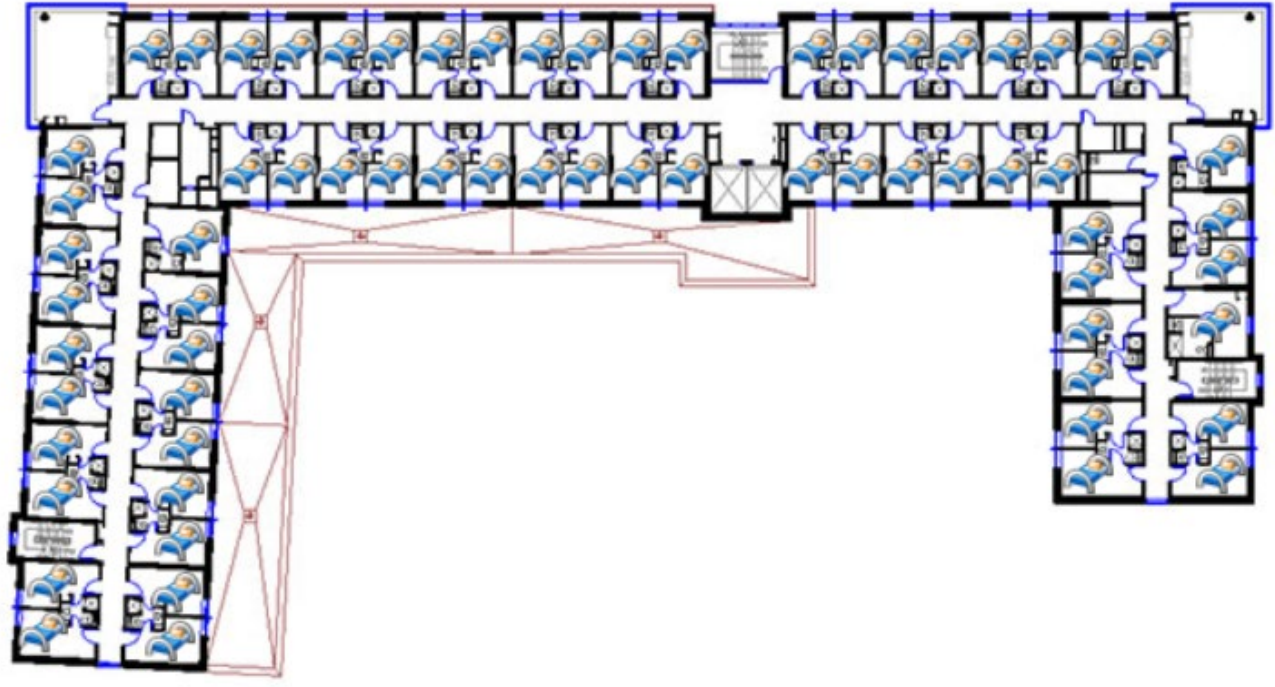
---



# Residence Floor Plans

## Smith Hall – 2<sup>nd</sup> Floor

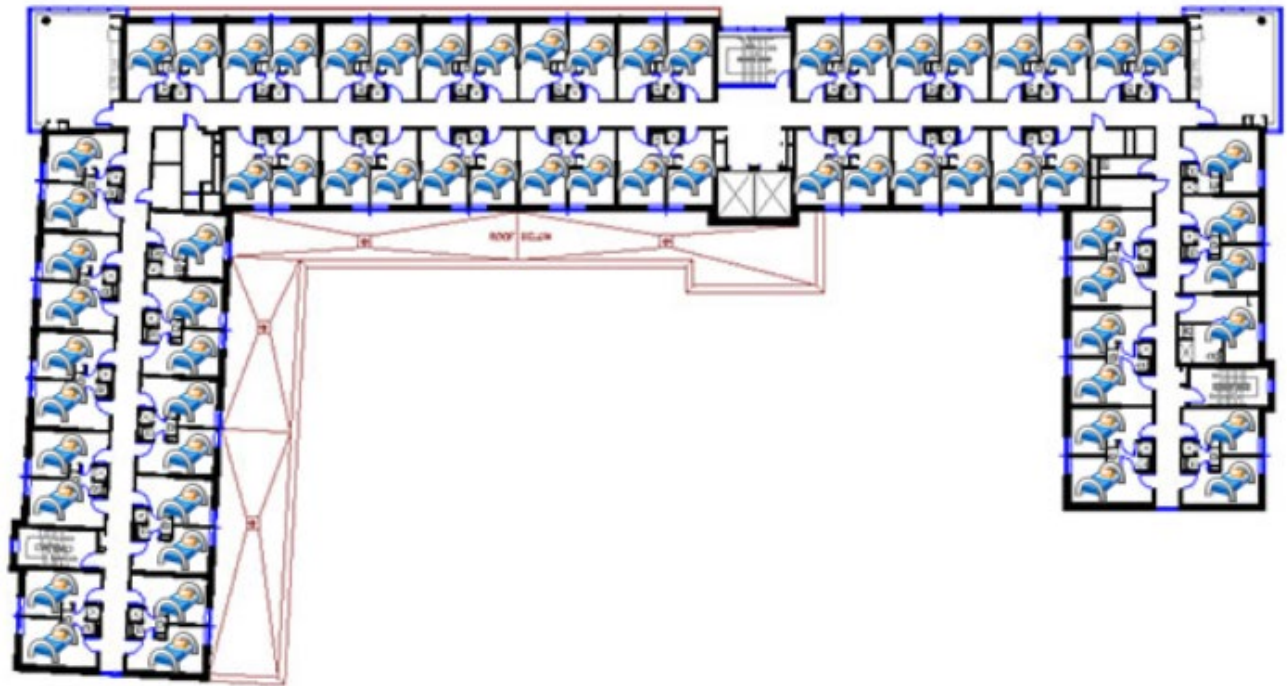
---



# Residence Floor Plans

## Smith Hall – 3<sup>rd</sup> Floor

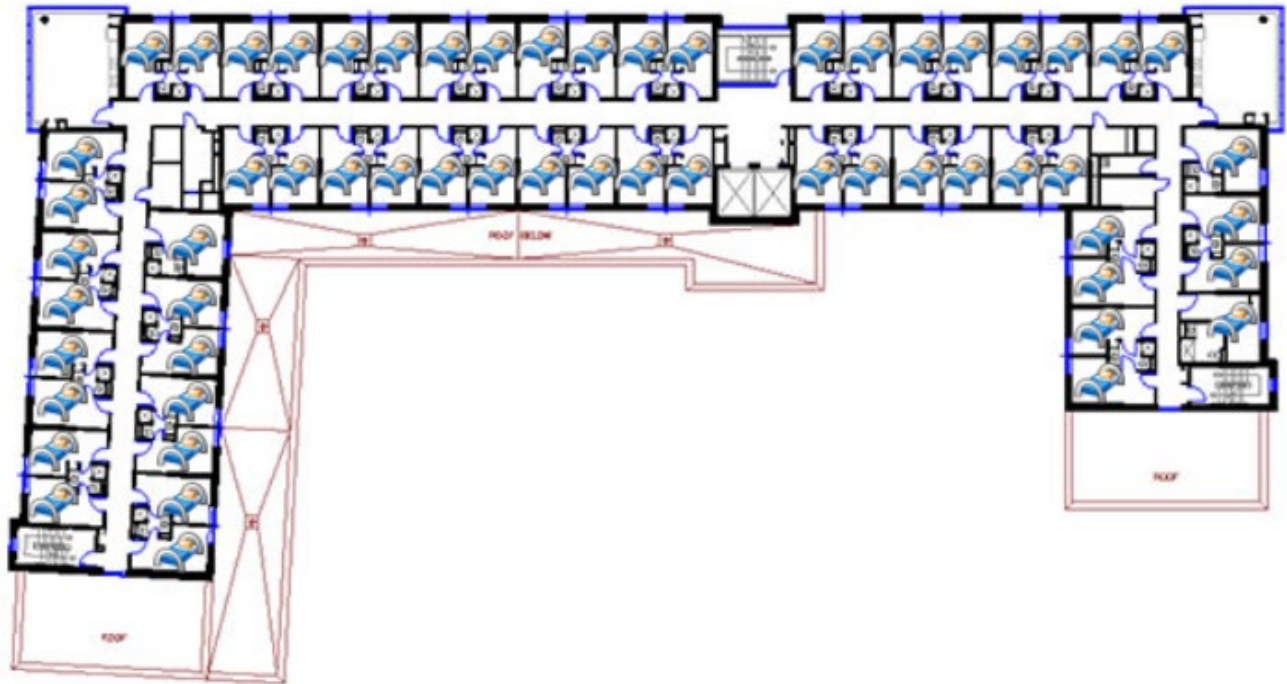
---



# Residence Floor Plans

## Smith Hall – 4<sup>th</sup> Floor

---



# Residence Floor Plans

## Smith Hall – 5<sup>th</sup> Floor

---

