

## Chemwatch WHMIS Workplace Label Creation

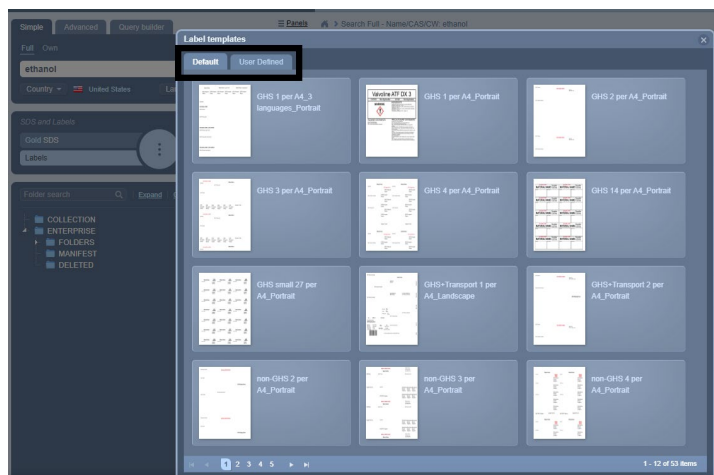
1. Log in to ChemWatch

[ChemWatch SDS Login](#)

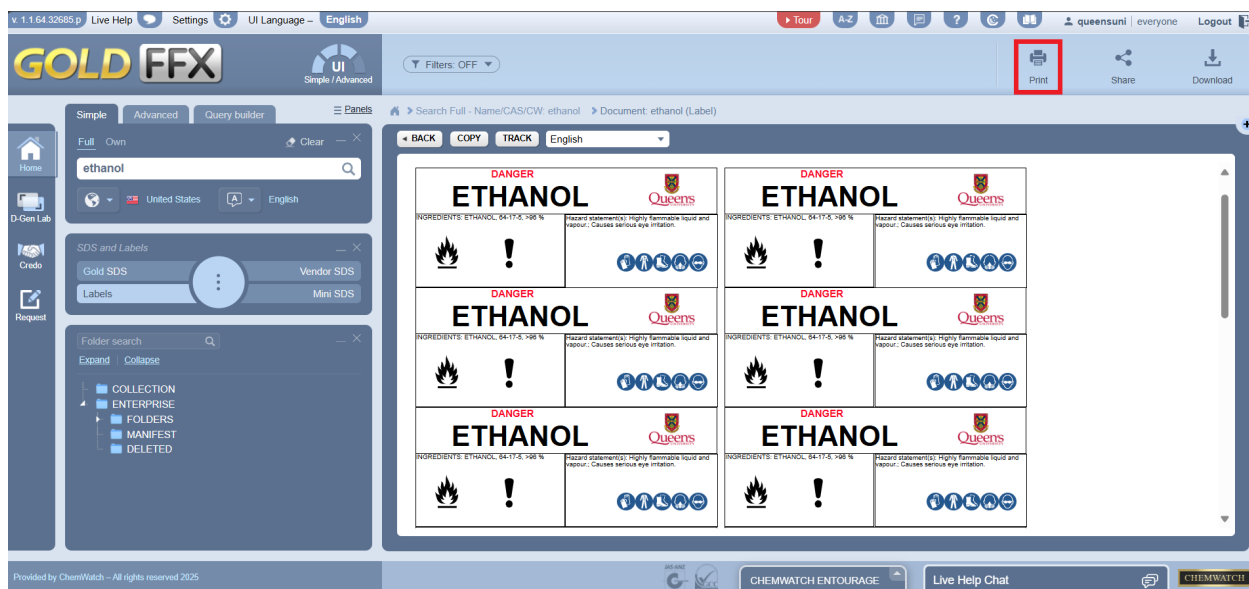
2. Make sure you have clicked on the 'Simple' tab and entered your chemical name into the search bar.



3. Find the chemical (including %) in the generated list.
4. Click on 'Labels' under SDS and Labels.
5. A pop-up window will appear called 'Label Templates'. You can toggle between Default and User defined tabs.



- The pre-generated bleach and ethanol labels found on our website were created using the template found under User defined, then 'Queen's WHMIS Workplace Label'.
- Hover over the template you want and click the 'Select' button on the right (looks like a play button).
- Once the template is finished rendering, you can print (or download) the file.



- After the file has been downloaded, you can edit the file as necessary (if required).
- Print labels and affix to chemical bottles using tape. To protect them from getting wet, it is suggested to tape over the entire surface of the label (such as with packing tape) or to use printable chemical grade labels.
- Write the date the solution was made on the label.