

RESEARCH **CASTING** INTERNATIONAL

DINO LAB

FOSSIL PREP & CONSERVATION

Visit Us
Online!

www.rescast.com



Prep work on *Zuul crurivastator* for the ROM, Toronto

FOSSIL PREPARATION, RESTORATION & CONSERVATION

RCI conservators are experienced in handling, preparing and preserving skeletal elements from existing armature, plaster jackets, matrix, or plaques. This is completed utilizing a variety of tools such as aircsribes, carbide needles, dental picks and brushes. We are knowledgeable in preventive conservation measures and have collaborated with museums on an international level.

RCI offers conservation consultations addressing materials and processes. We are continuously developing our understanding of conservation, seeking new museum long-term preservation techniques for specimens. All fossil elements are safely secured in our storage facility and a record of all relevant information pertaining to an individual specimen is maintained.



Preparation of *Tylosaur proriger* caudal vertebrae for the Smithsonian National Museum of Natural History



Preparation of the *Alamosaurus* for the Perot Museum, Dallas, Texas

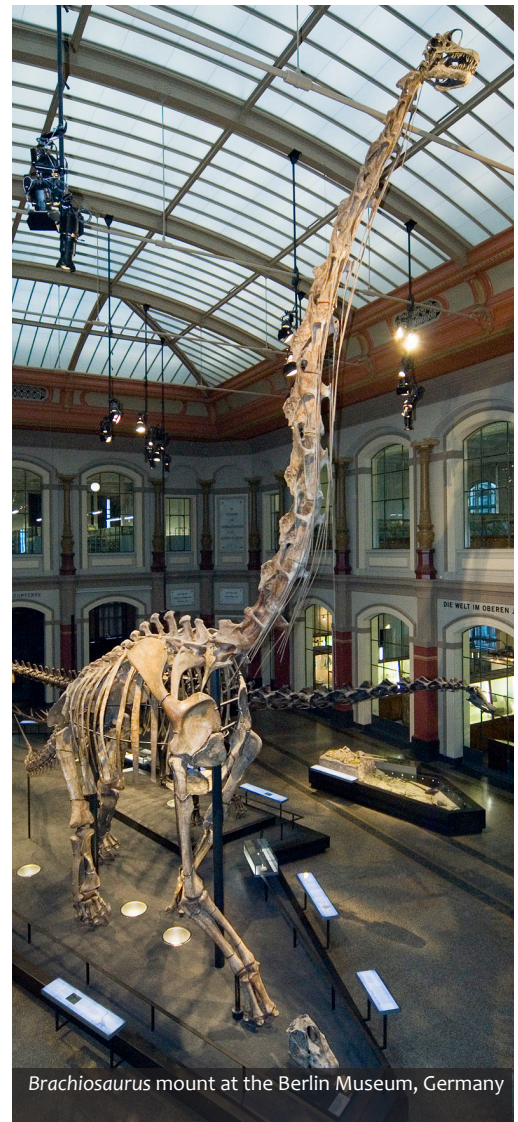
Online Video Links!

Quinte West Doors Open Tour: <https://vimeo.com/460966634>
Washington Post: Nation's T.rex: https://www.youtube.com/watch?v=oYX_KRLV4c
Community Futures Feature:
Peter May, RCI Founder: <https://www.youtube.com/watch?v=bXsr3uFudV8>
Journey of the Peabody Fossils: <https://youtu.be/WmWbuSvUj3A?t=171>

SPECIMEN MOUNTING

The world's foremost Natural History museums have continuously entrusted our professional skeleton crew to mold and mount their most valuable paleontological specimens. Our services include custom metal fabrication, sculpting, finishing and painting.

We specialize in shaping steel to fit inside cast materials and incorporating machine keyways in the mount for easy assembly and disassembly.



Brachiosaurus mount at the Berlin Museum, Germany

SCIENCE RENDEZVOUS KINGSTON
MAY 13TH 2023

Leon's Centre & Tragically Hip Way
10am - 3pm
www.queensu.ca/vpr/stemygk

Queen's UNIVERSITY