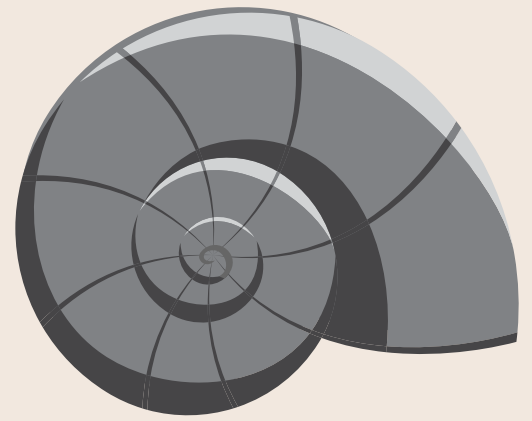


# MAKE YOUR OWN FOSSIL



BROUGHT TO YOU BY: KINGSTON ROCKS! BOOTH

## MATERIALS REQUIRED

- PLASTIC SPOON
- VASELINE
- PLASTICINE
- PAPER PLATE
- PLASTER OF PARIS
- PLASTIC ANIMAL
- PAPER CUP

THE LIMESTONE IN KINGSTON IS FULL OF FOSSILS OF MARINE ANIMALS THAT LIVED ABOUT 450 MILLION YEARS AGO! MAKE YOUR OWN FOSSIL USING A SMALL, PLASTIC ANIMAL AND SOME OTHER MATERIALS. FIRST, CREATE A CAST OF A FOSSIL (AN IMPRINT OF THE ANIMAL), THEN FILL IT IN WITH PLASTER OF PARIS.

RECREATE A PROCESS THAT TAKES MILLIONS OF YEARS IN JUST AN HOUR!

1



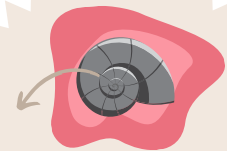
PLACE A BALL OF PLASTICINE ABOUT THE SIZE OF A LEMON ON THE PLATE AND FLATTEN SLIGHTLY.

2



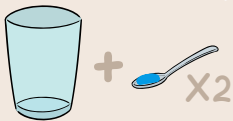
RUB THE OUTSIDE OF THE PLASTIC ANIMAL WITH VASELINE, THEN PRESS IT INTO THE PLASTICINE.

3



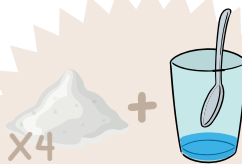
SLOWLY REMOVE ANIMAL SO A PRINT OF IT REMAINS. THIS TYPE OF IMPRINT IS CALLED A "CAST FOSSIL".

4



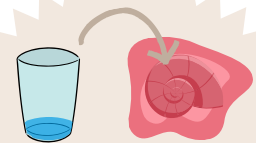
PUT TWO SPOONFULS OF WATER INTO THE CUP.

5



ADD FOUR SPOONFULS OF PLASTER OF PARIS INTO THE WATER AND STIR.

6



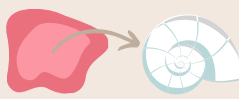
POUR THE MIXTURE INTO THE PRINT IN THE PLASTICINE.

7



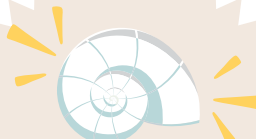
ALLOW THE PLASTER TO HARDEN FOR 15-30 MINUTES.

8



SEPARATE PLASTICINE FROM PLASTER MOLD. YOU WILL BE LEFT WITH A FOSSIL - A HARDENED REPLICA OF THE PLASTIC ANIMAL.

9



PAINT YOUR PRESERVED FOSSIL AND DISPLAY IT IN YOUR ROOM OR CLASSROOM!

BROUGHT TO YOU BY:

Geoscience  
INFO.com

