

Pathway to completing your PhD in Pathology and Molecular Medicine

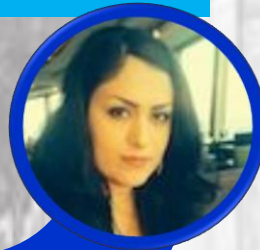
YEAR ONE (Summer Term)

- ✓ Have first committee meeting and present research proposal
- ✓ Continue research



YEAR TWO

- ✓ Complete comprehensive examination requirements
- ✓ Continue research



- ## YEAR ONE
- (Fall & Winter Terms)
- ✓ Identify if any course work is required
 - ✓ Complete all required health & safety, animal, human research ethics training
 - ✓ Development of research proposal
 - ✓ Start research

Seeking strategies for success?
Check out the graduate academic, professional and personal development workshops (Expanding Horizons)

YEAR FOUR

- ✓ Completion of research and thesis, preparation for and completion of oral thesis exam



Did you know?
Queen's provides writing workshops and dissertation boot camps



Thought about your career?
Check out Expanding Horizons to help you prepare, plan and search



NEXT STEPS

Career opportunities post-graduation range from scientist, academia, private sector or in the government sector