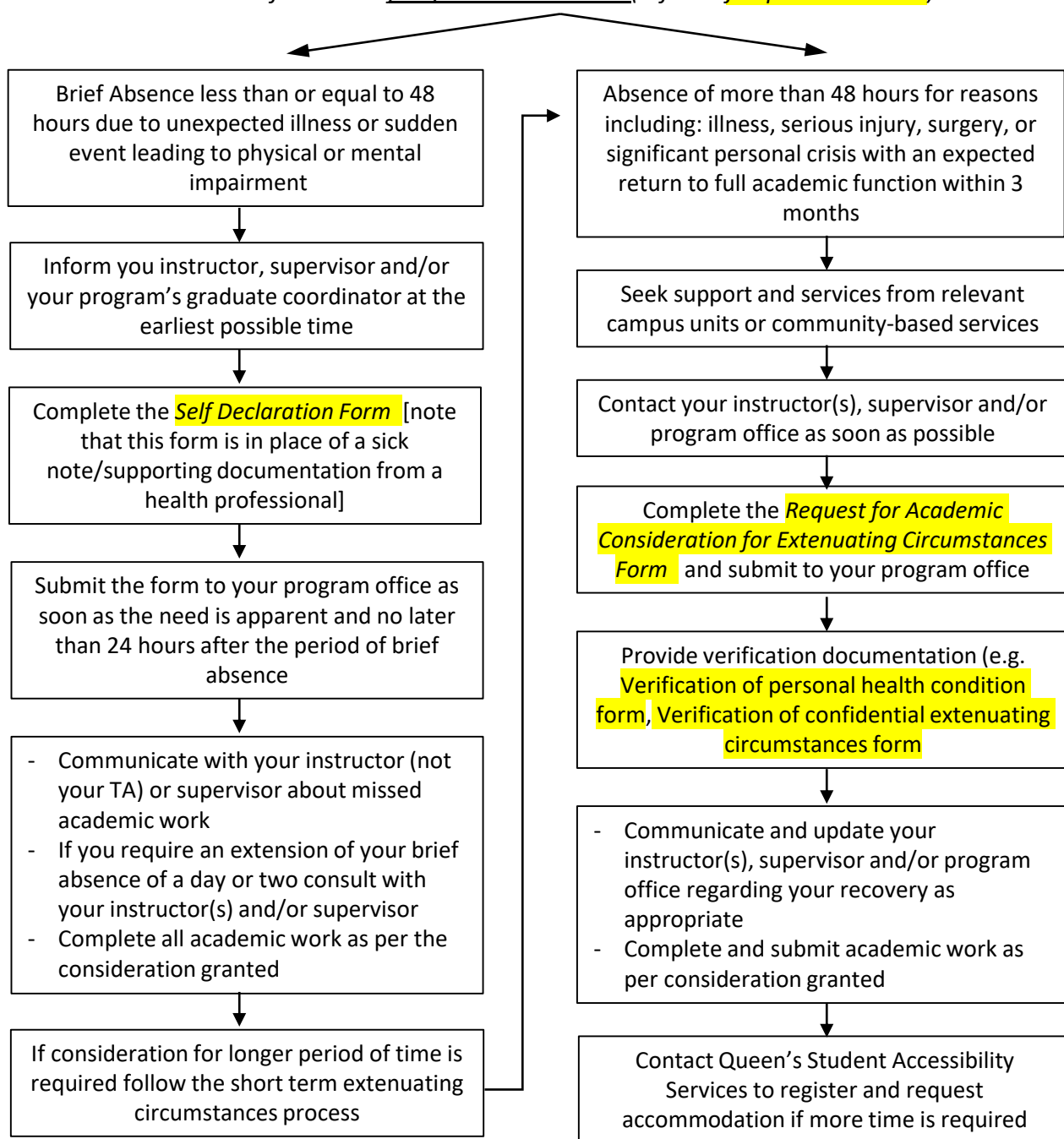


Academic consideration for **graduate students** in extenuating circumstances*

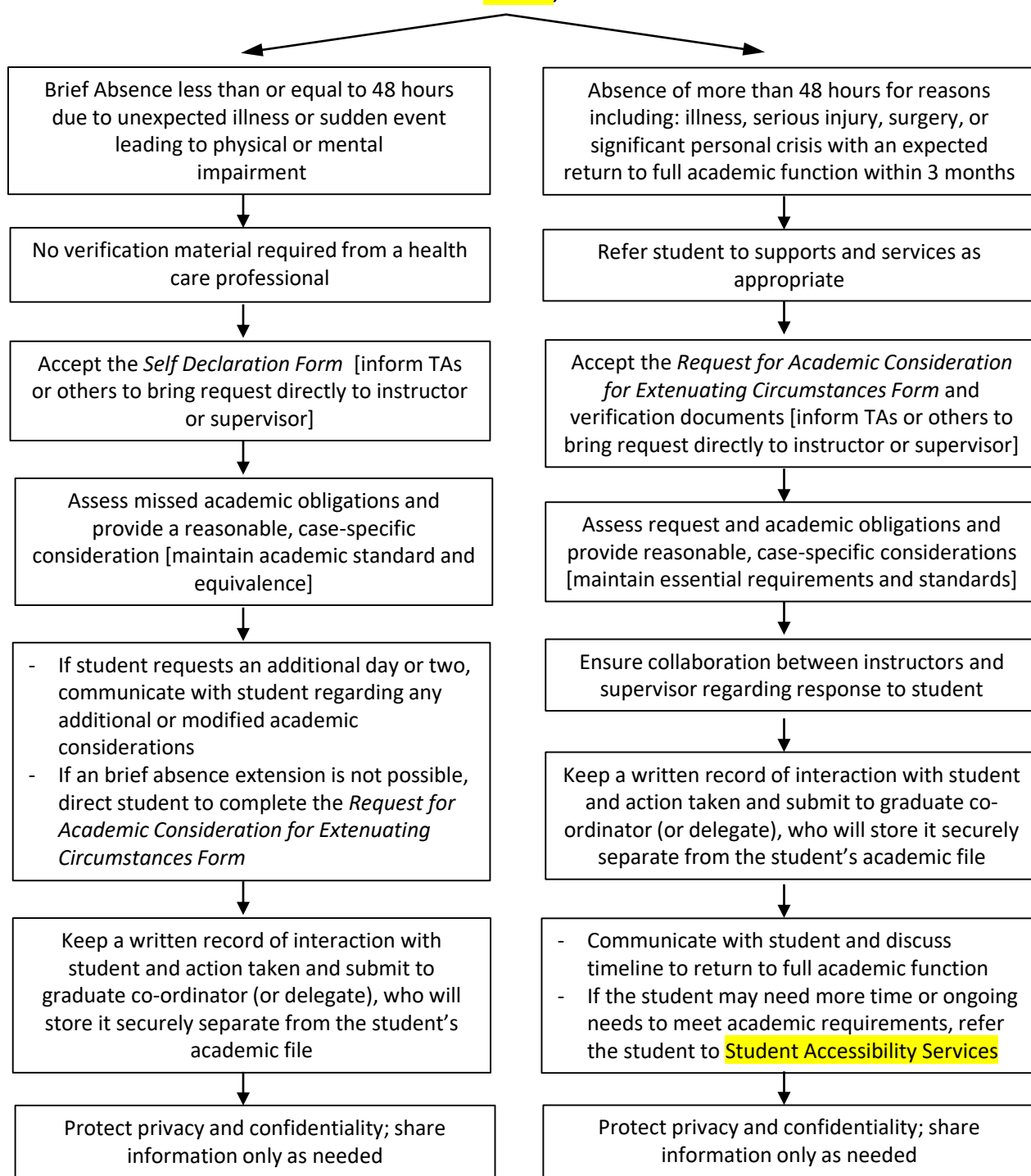
Process flow chart for graduate students (refer to **full process details**)



* Requests for academic consideration due to extenuating circumstances and any resulting consideration granted are based on the principle of good faith, wherein all parties are requested to assume that the extenuating circumstances are legitimate and that any considerations granted are deemed to be in the best interest of the student. Students receiving academic considerations must meet all essential academic requirements and standards of the program. The use of this protocol and the related policy and procedures to provide false or misleading information or to delay or avoid fulfilling academic requirements constitutes academic dishonesty, and students will be subject to the university's [Academic Integrity Policy](#).

Academic consideration for **graduate students** in extenuating circumstances*

Process flow chart for program offices, faculty instructors and supervisors (see **full process details**)



* Requests for academic consideration due to extenuating circumstances and any resulting consideration granted are based on the principle of good faith, wherein all parties are requested to assume that the extenuating circumstances are legitimate and that any considerations granted are deemed to be in the best interest of the student. . Students receiving academic considerations must meet all essential academic requirements and standards of the program. The use of this protocol and the related policy and procedures by any student to provide false or misleading information or to delay or avoid fulfilling academic requirements constitutes academic dishonesty, and students will be subject to the university's [Academic Integrity Policy](#).