

Meeting Demand: Trends in Aboriginal Post-Secondary Education (PSE)

Dr. Jerry White

Professor and Associate Dean of Social Science,
University of Western Ontario

Director, Aboriginal Policy Research Consortium (International)
Editor in Chief, The International Indigenous Policy Journal

Dr. Catherine Gordon

Post-Doctoral Researcher

Aboriginal Policy Research Consortium (International)
University of Western Ontario

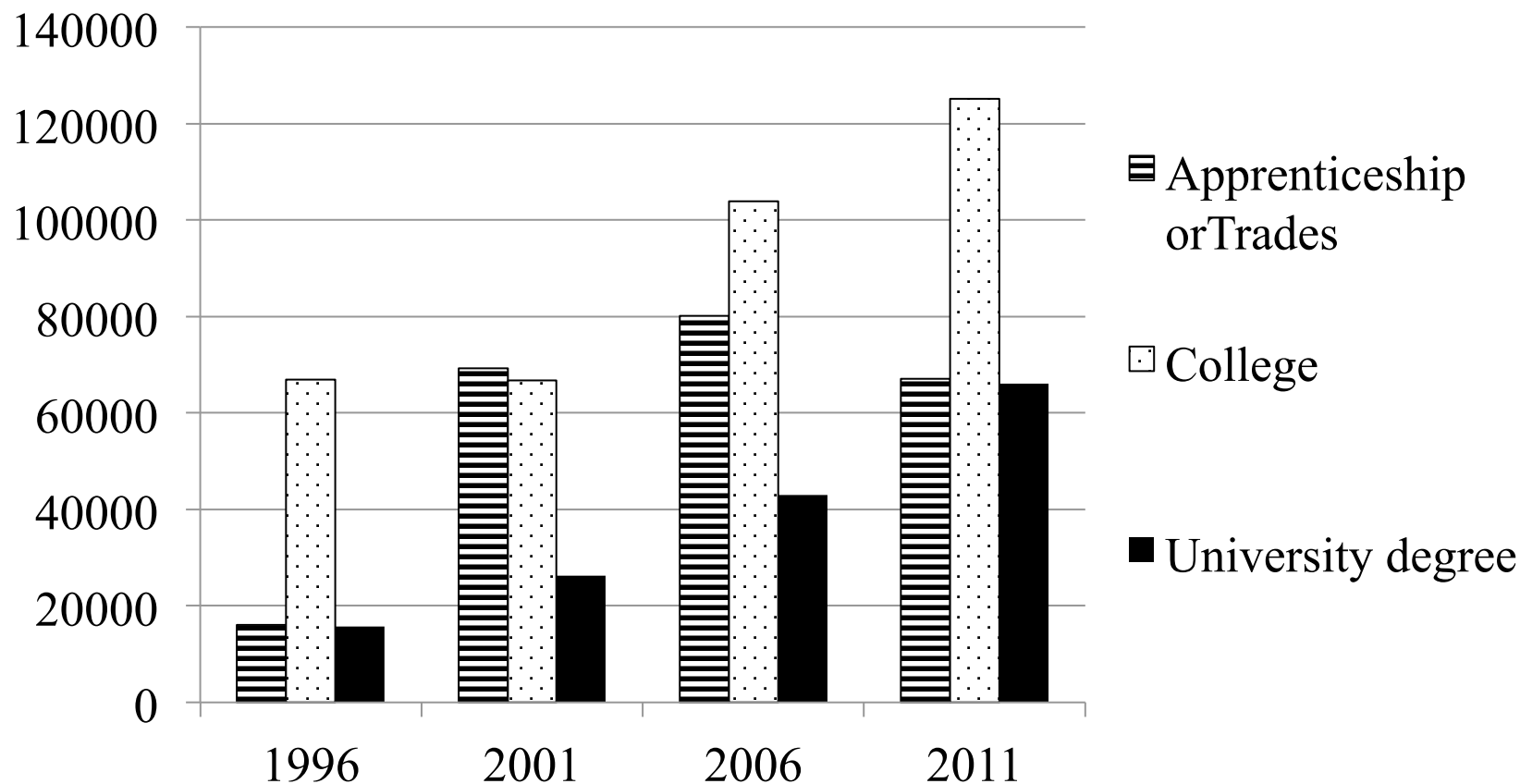
Monday October 7, 2013

Areas of Paper

1. Aboriginal Post-Secondary Education (PSE)
Attainment over time (absolute numbers)
2. High School Completion
3. Potential PSE Participations
4. Aboriginal PSE Attainment over time
5. Comparisons between Aboriginal & Non-Aboriginal
6. Aboriginal Identity Groups and Geographic Location
7. Projections for 2021
8. Major Field of Study

Aboriginal PSE Attainment over time

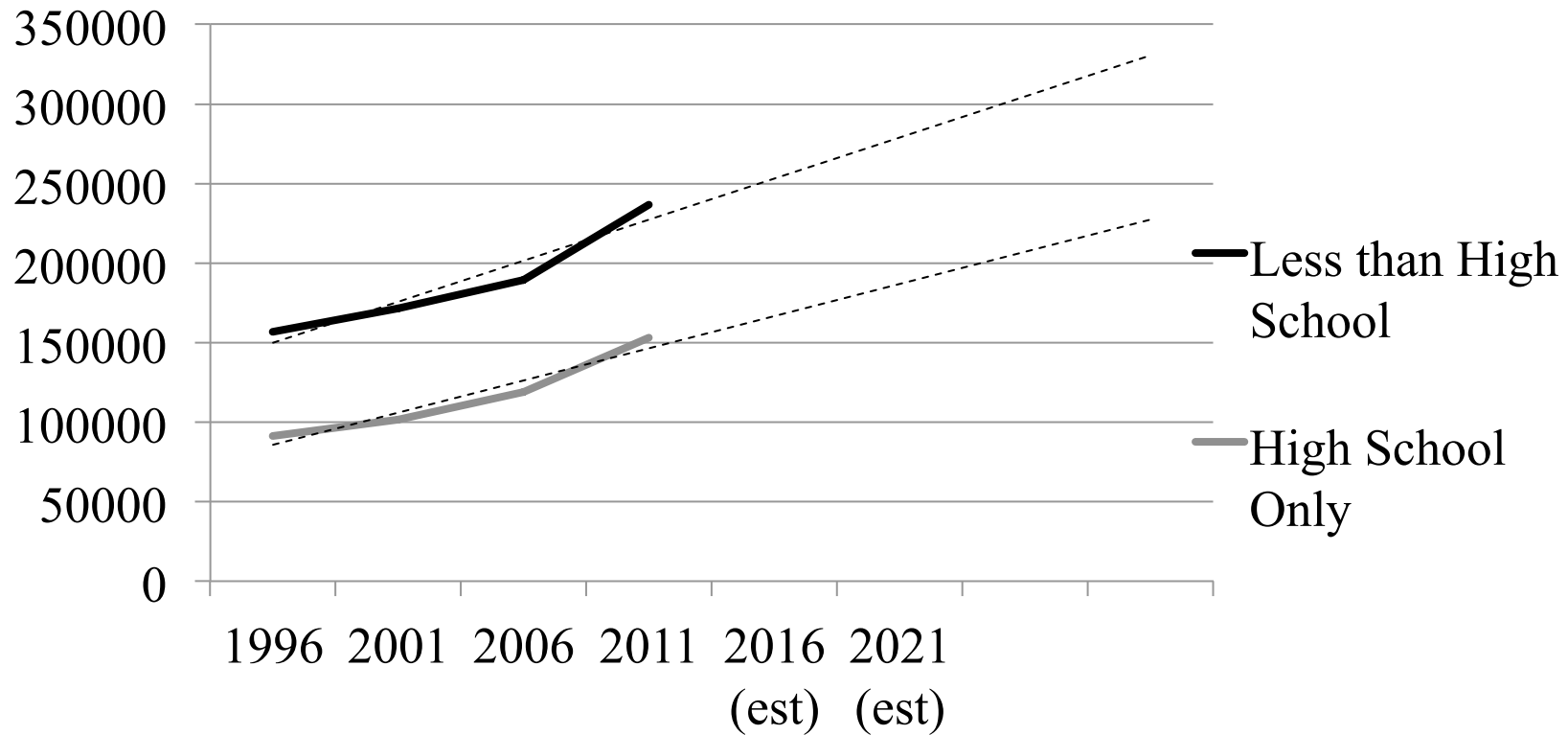
Figure 1 PSE Type for Aboriginal Population, 25-64 years, 1996-2011, absolute numbers



SOURCES: Statistics Canada (1996, 2001a, 2006a, 2011a)

High School Completion

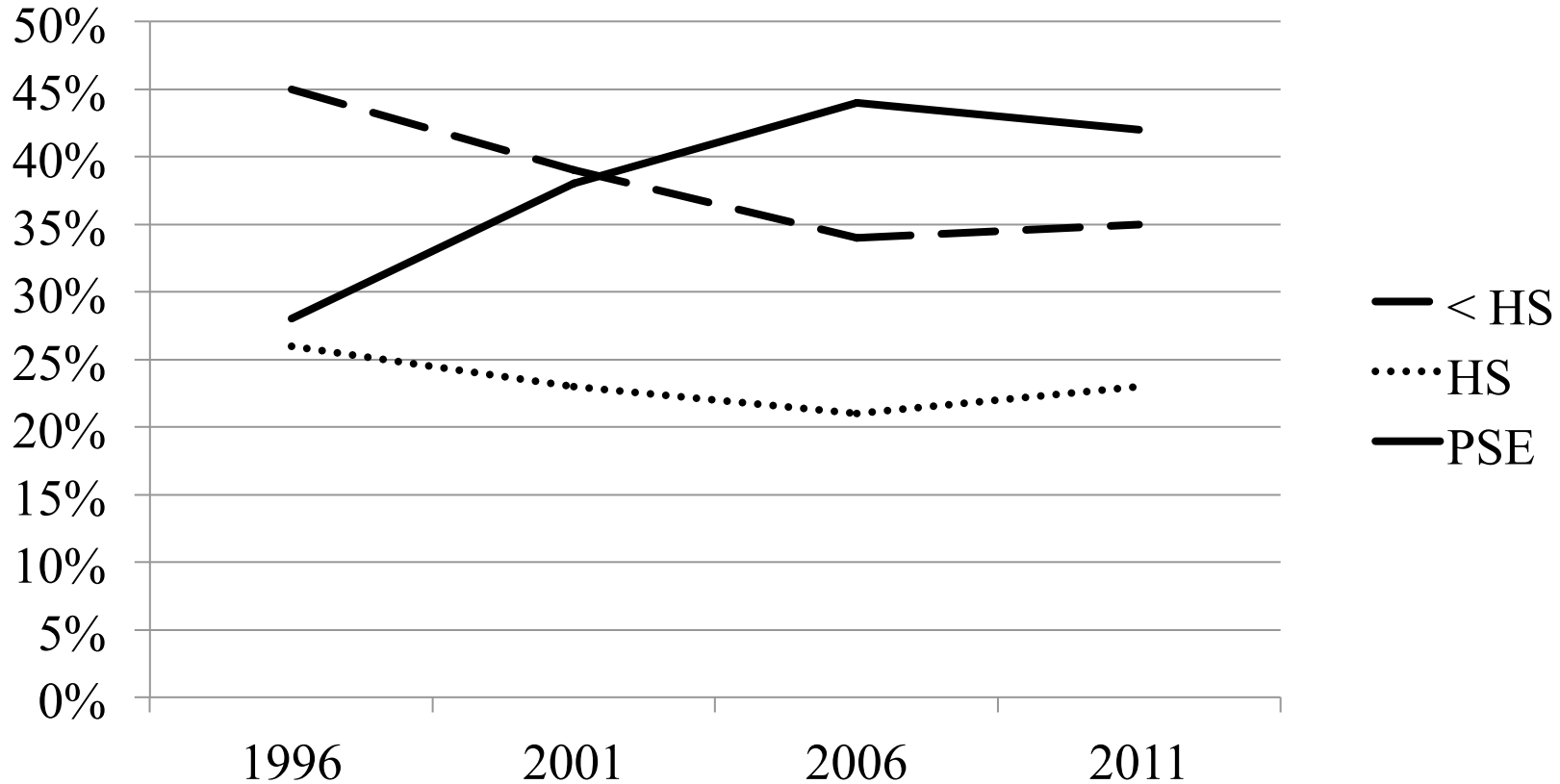
Figure 3 Projected Less than High School and High School Only Educational Attainment for Aboriginal Population, 25-64 years, 1996-2021, absolute and estimated numbers



SOURCES: Statistics Canada (1996, 2001a, 2006a, 2011a)

Trends in Attainment

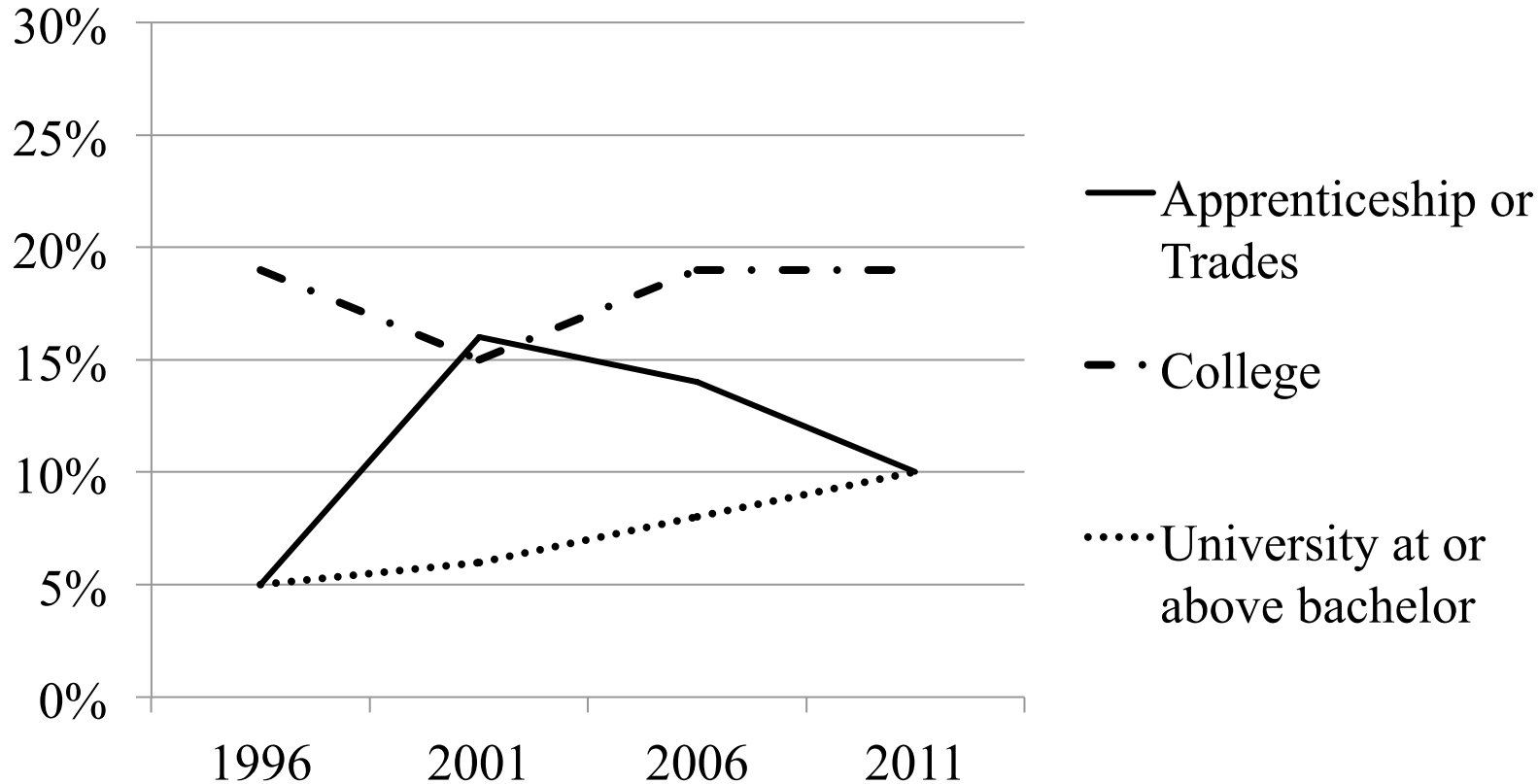
Figure 5 Aboriginal Educational Attainment 25-64 years, 1996-2011, percentages



SOURCES: Statistics Canada (1996, 2001a, 2006a, 2011a)

Where are people going?

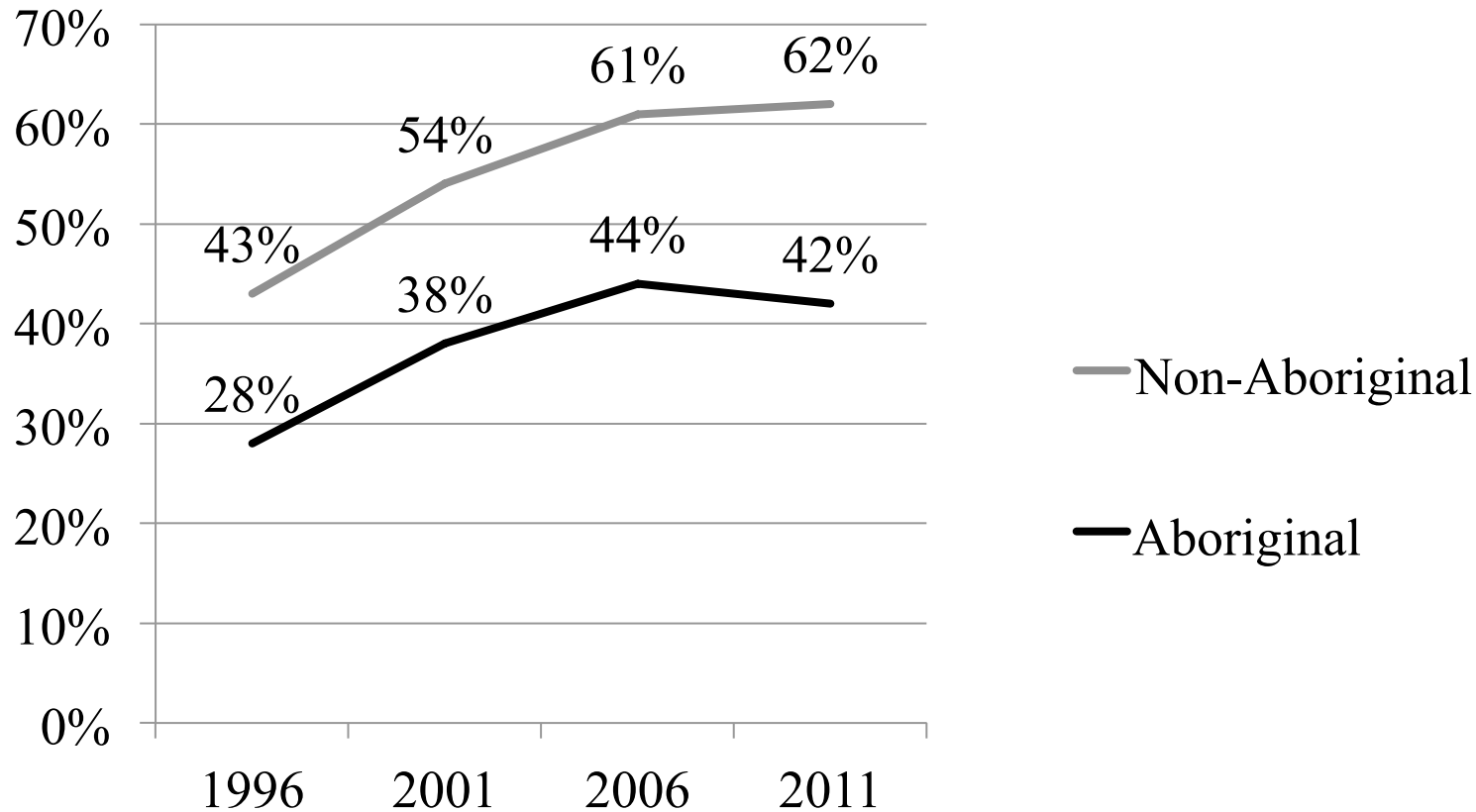
Figure 6 Aboriginal Type of PSE Attainment, 25-64 years, 1996-2011, percentages



SOURCES: Statistics Canada (1996, 2001a, 2006a, 2011a)

Comparisons: PSE Attainment

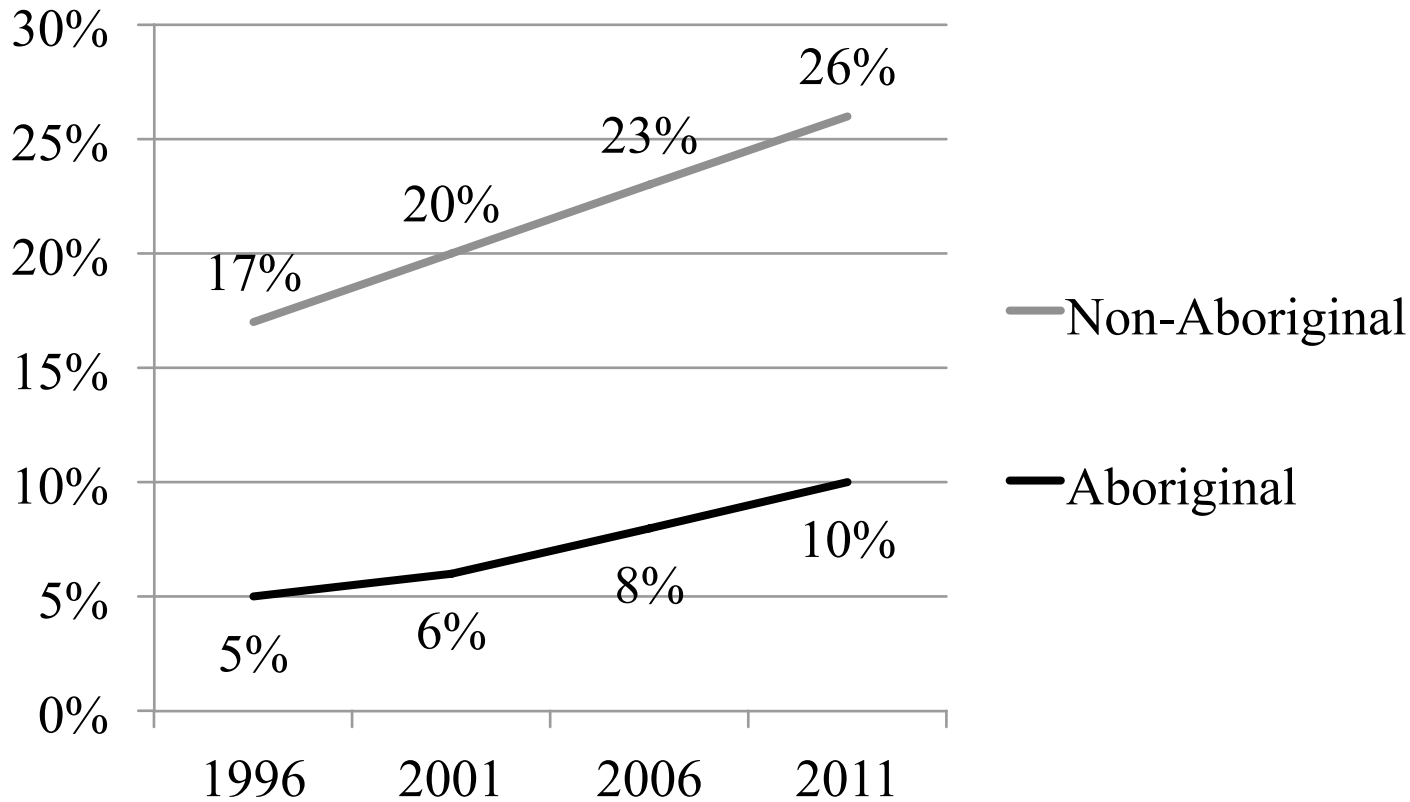
Figure 9 Aboriginal and Non-Aboriginal PSE Attainment, 25-64 years, 1996-2011



SOURCES: Statistics Canada (1996, 2001a, 2006a, 2011a)

Comparisons: University Attainment

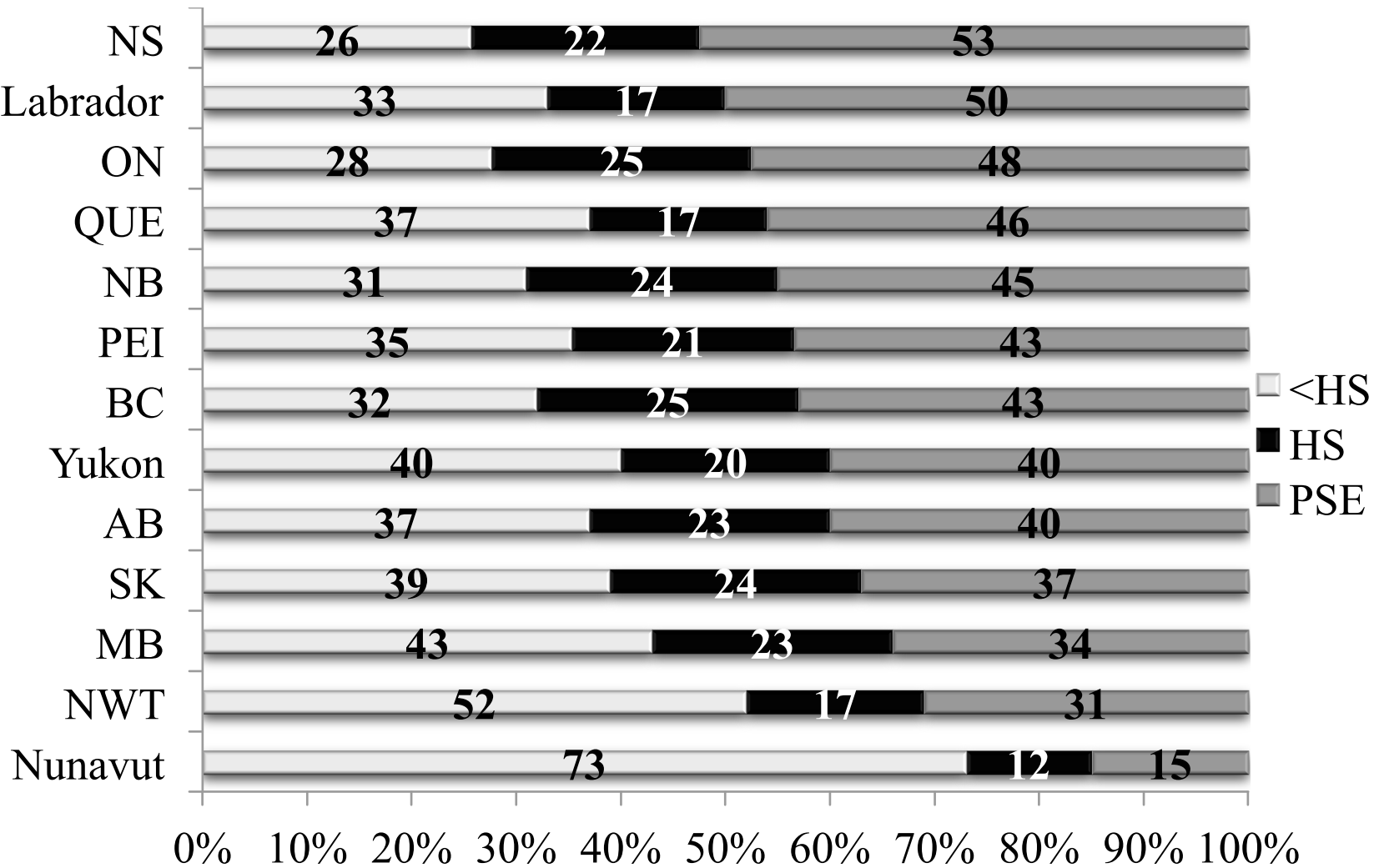
Figure 13 Aboriginal and Non-Aboriginal University Attainment, 25-64 years, 1996-2011



SOURCES: Statistics Canada (1996, 2001a, 2006a, 2011a)

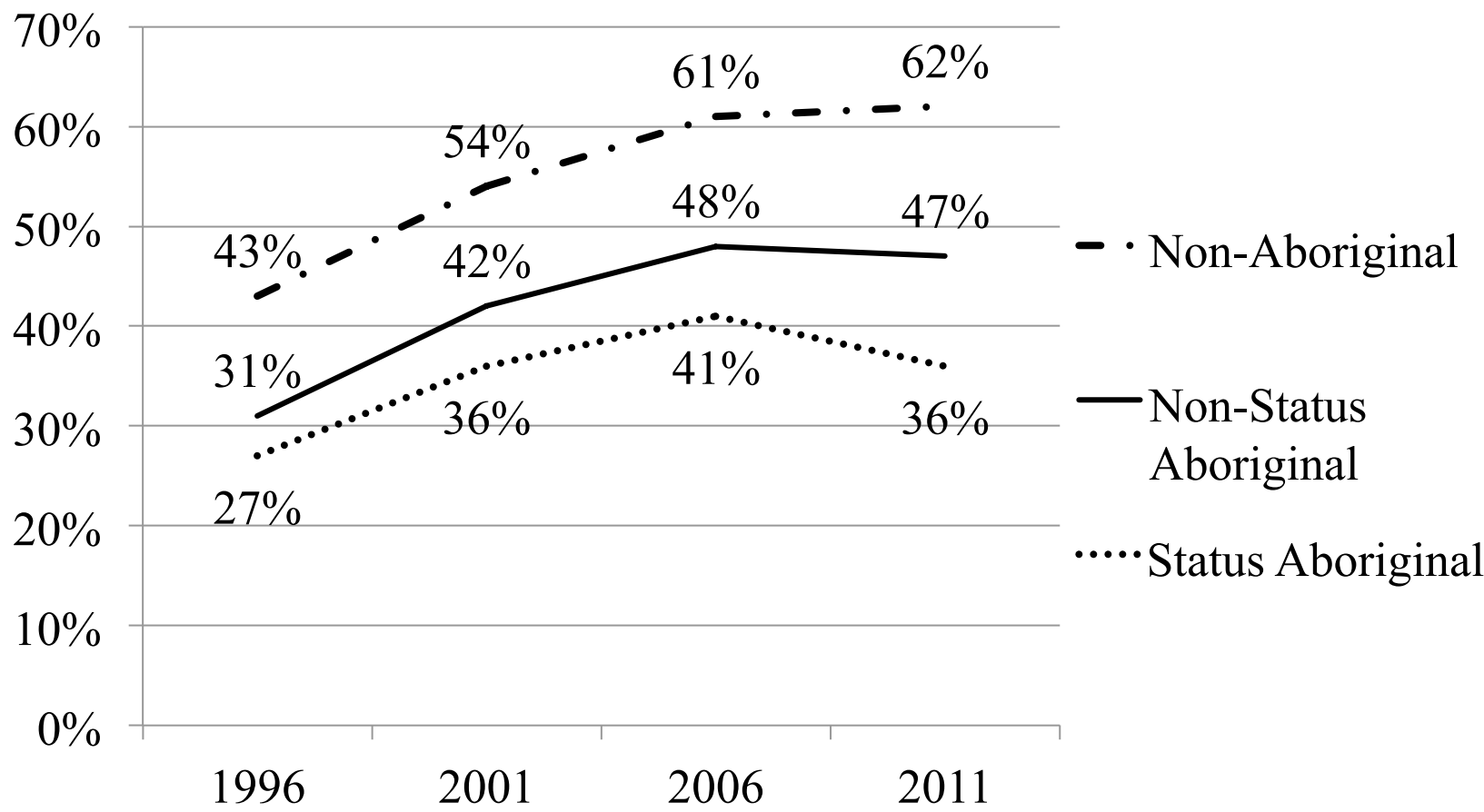
Aboriginal Identity Groups and Geographic Location

Figure 14 Aboriginal Highest Educational Attainment, Provinces and Territories, 25-64 years, 2011, percentages



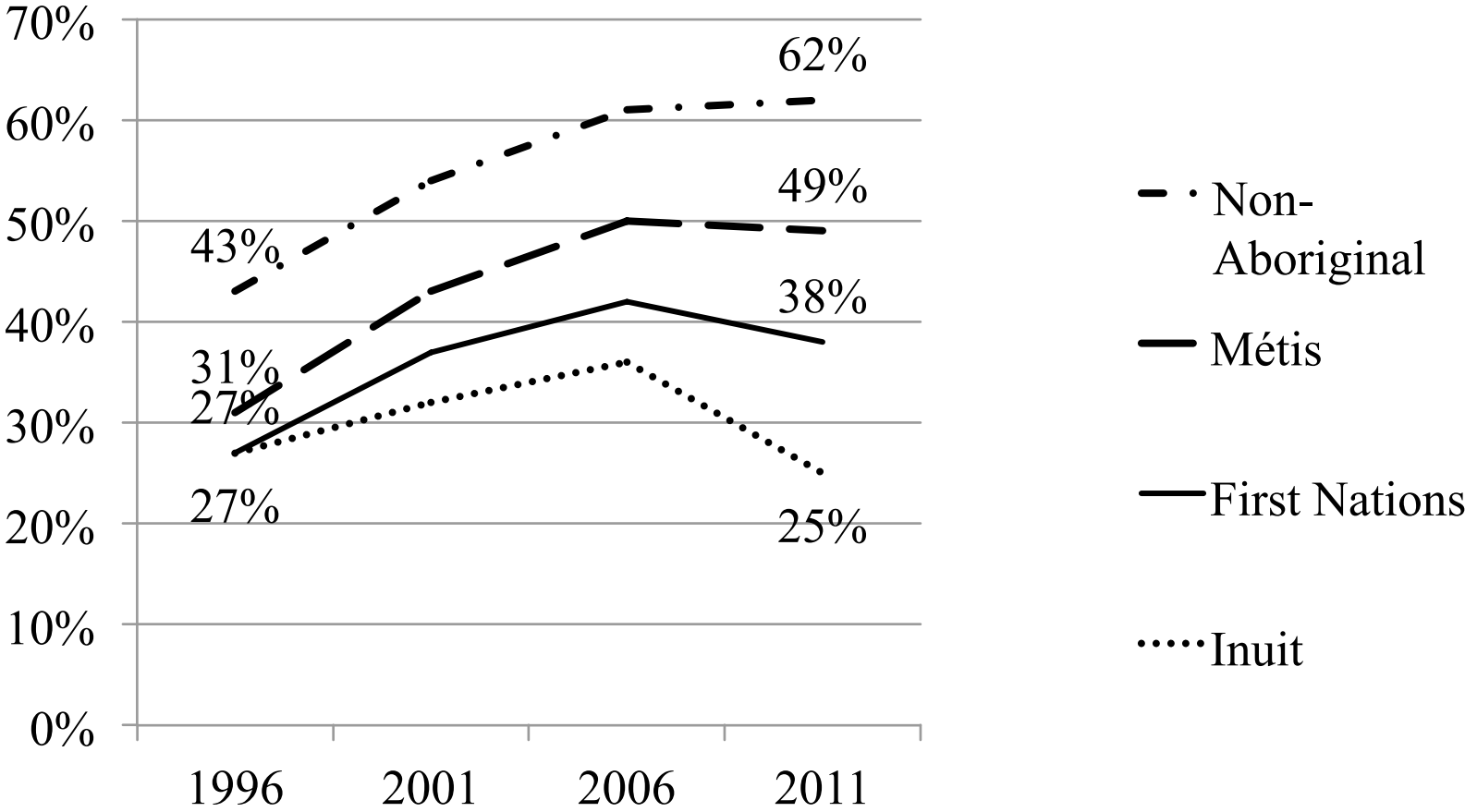
SOURCES: Statistics Canada (2011a)

Figure 15 PSE Attainment among Non-Aboriginals and Aboriginals by Status, 25-64 years, 1996-2011, percentages



SOURCES: Statistics Canada (1996, 2001b, 2006c, 2011a)

Figure 17 PSE Attainment by Non-Aboriginal and Aboriginal Identity, 25-64 years, 1996-2011, percentages



SOURCES: Statistics Canada (1996, 2001a, 2006a, 2011a)

What are people studying?

TABLE 3: OVER AND UNDERREPRESENTATION OF ABORIGINAL UNIVERSITY DEGREE HOLDERS*

	% of degree holders by field of study		
	Aboriginal peoples on reserves	Aboriginal peoples off reserves	Non-Aboriginal peoples
Overrepresentation			
Education	40.3%	21.5%	13.0%
Health care and social services	5.7%	11.5%	12.0%
Public administration and social services	13.8%	6.5%	1.9%
Area, ethnic, cultural, gender, and group studies	3.1%	1.3%	0.2%
Legal studies	2.7%	3.5%	2.7%
Underrepresentation			
Business, management, and marketing	8.9%	11.4%	18.2%
Mathematics, computer and information sciences	0.8%	2.2%	4.8%
Engineering	1.4%	4.1%	10.6%
Physical and life sciences	1.5%	5.7%	7.4%

*Bachelor's degree and above; Source: Statistics Canada Censuses of Population, National Household Survey

Note: Table courtesy of TD Bank. 15+ years age group is used.

Reflections

Thank-you

Dr. Jerry White
white@uwo.ca

Dr. Catherine Gordon
cgordo28@uwo.ca